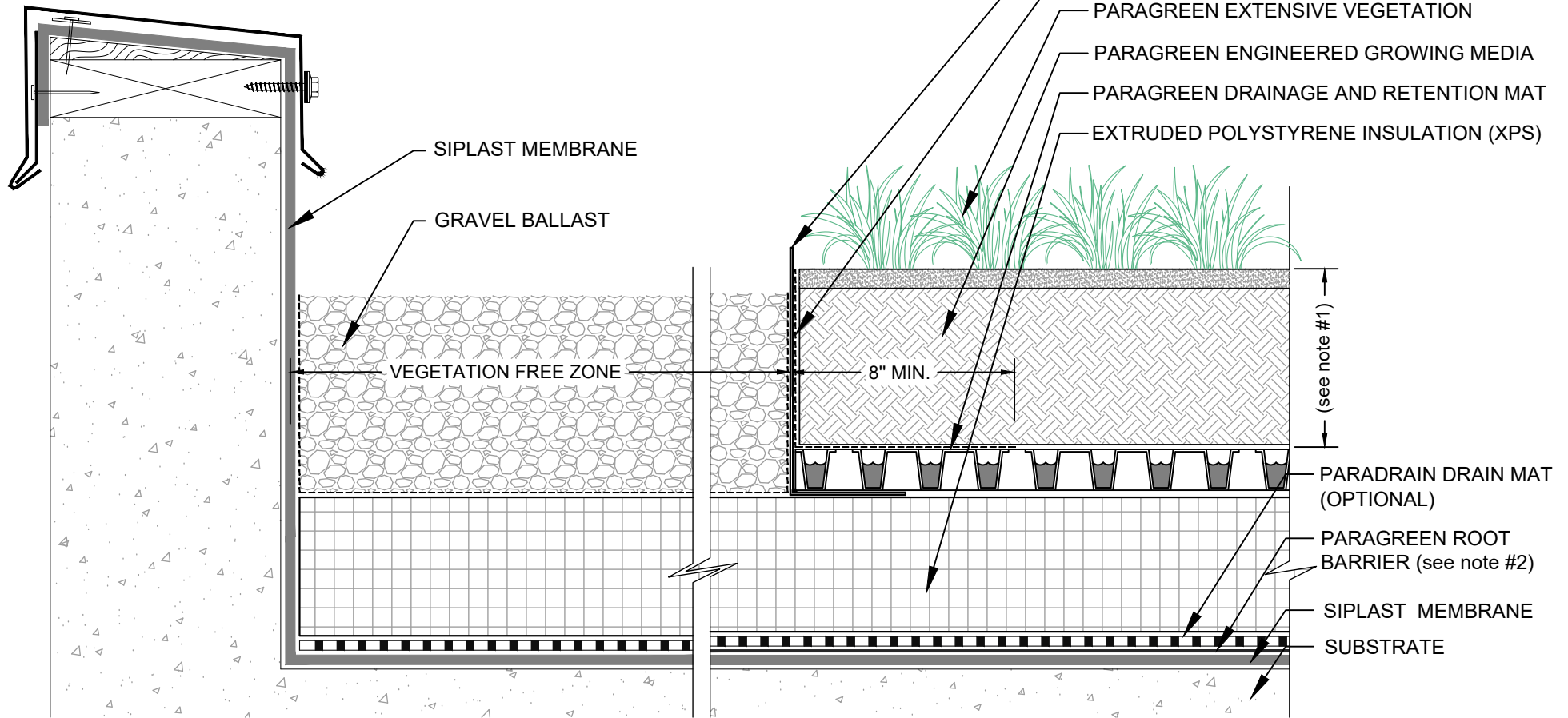


VEGETATION FREE ZONE AT PARAPET (gravel ballast) PARAGREEN EXTENSIVE ASSEMBLY - IRMA



NOTES:

1. THE VEGETATED ROOF ASSEMBLY IS SHOWN FOR REFERENCE PURPOSES ONLY. DIMENSIONS OF COMPONENTS WILL VARY ACCORDING TO SPECIFIC BUILDING SIZE INSULATION, GROWING MEDIUM AND PERIMETER COMPONENTS.
2. ROOT BARRIER IS OPTIONAL WITH PARAPRO OR PARAFLEX MEMBRANE SYSTEMS.
3. REQUIREMENTS AND RECOMMENDATIONS DETAILED IN CURRENT SIPLAST SPECIFICATIONS SHALL APPLY IN ADDITION TO THE ABOVE DRAWING.
4. DESIGNER OF RECORD TO VERIFY CAPACITY OF DECK/SUBSTRATE TO ACCOMMODATE LOAD OF THE OVERBURDEN COMPONENTS.

CAUTION: SIPLAST RECOMMENDS THAT ALL PRACTICES PERTAINING TO INDUSTRY STANDARD TORCH SAFETY REQUIREMENTS AND GUIDELINES BE FOLLOWED. THIS INCLUDES PERFORMING A FIRE WATCH FOLLOWING ANY TORCH APPLICATIONS. ALWAYS HAVE APPROVED FIRE EXTINGUISHING EQUIPMENT NEARBY WHEN USING A TORCH.

Scale: NTS

REF: VEGETATION FREE ZONE AT PARAPET - PARAGREEN EXTENSIVE ASSEMBLY - IRMA

Detail Number:
DE-VEG-42-05u



14911 Quorum Drive, Suite 600 - Dallas, Texas - 75254 (800) 922-8800

www.siplast.com

Rev: 01.24.2024