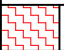
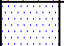
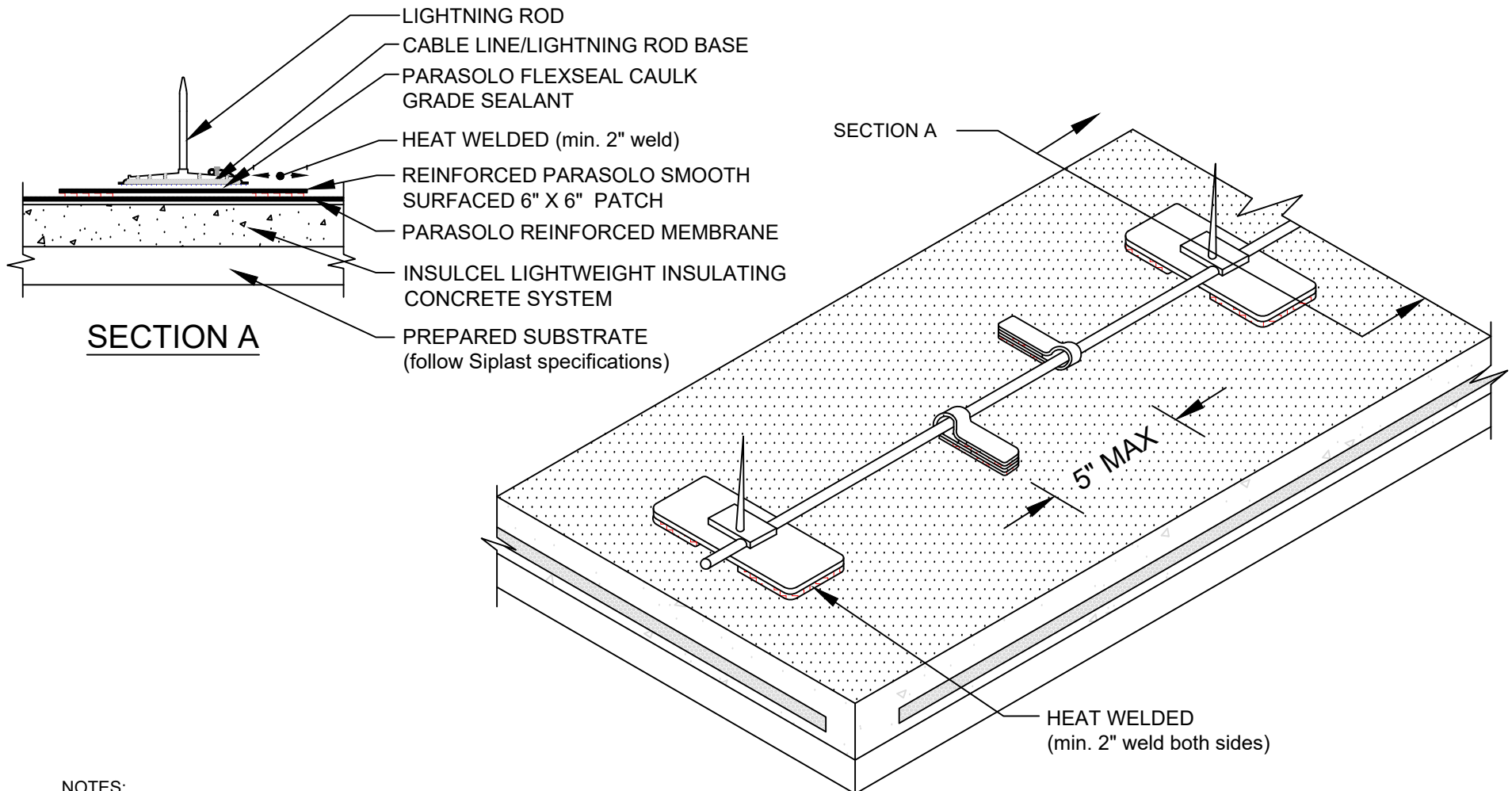


LIGHTNING PROTECTION TERMINAL - ROOF MOUNT DETAIL

PARASOLO ROOF MEMBRANE - (ALL SYSTEMS)

LEGEND	
	HEAT WELD
	SEALANT



NOTES:

1. DAMAGE TO PARASOLO MEMBRANE IS EXCLUDED FROM GURANTEE COVERAGE.
2. THE PARASOLO PATCHES SHOULD BE INSTALLED BY A SIPLAST SELECT CONTRACTOR.
3. THE INSTALLATION OF THE LIGHTNING PROTECTION SYSTEM SHOULD FOLLOW THE SPECIFICATIONS OF THE LIGHTNING PROTECTION SYSTEM MANUFACTURER.
4. REQUIREMENTS AND RECOMMENDATIONS DETAILED IN CURRENT SIPLAST SPECIFICATIONS SHALL APPLY IN ADDITION TO THE ABOVE DRAWING.

Scale: NTS

REF: LIGHTNING PROTECTION TERMINAL-ROOF MOUNT - PARASOLO - INSULCEL

Detail Number:
DE-SP-38-10e



14911 Quorum Drive, Suite 600 - Dallas, Texas - 75254 (800) 922-8800

www.siplast.com

Rev: 06.15.2023