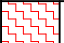
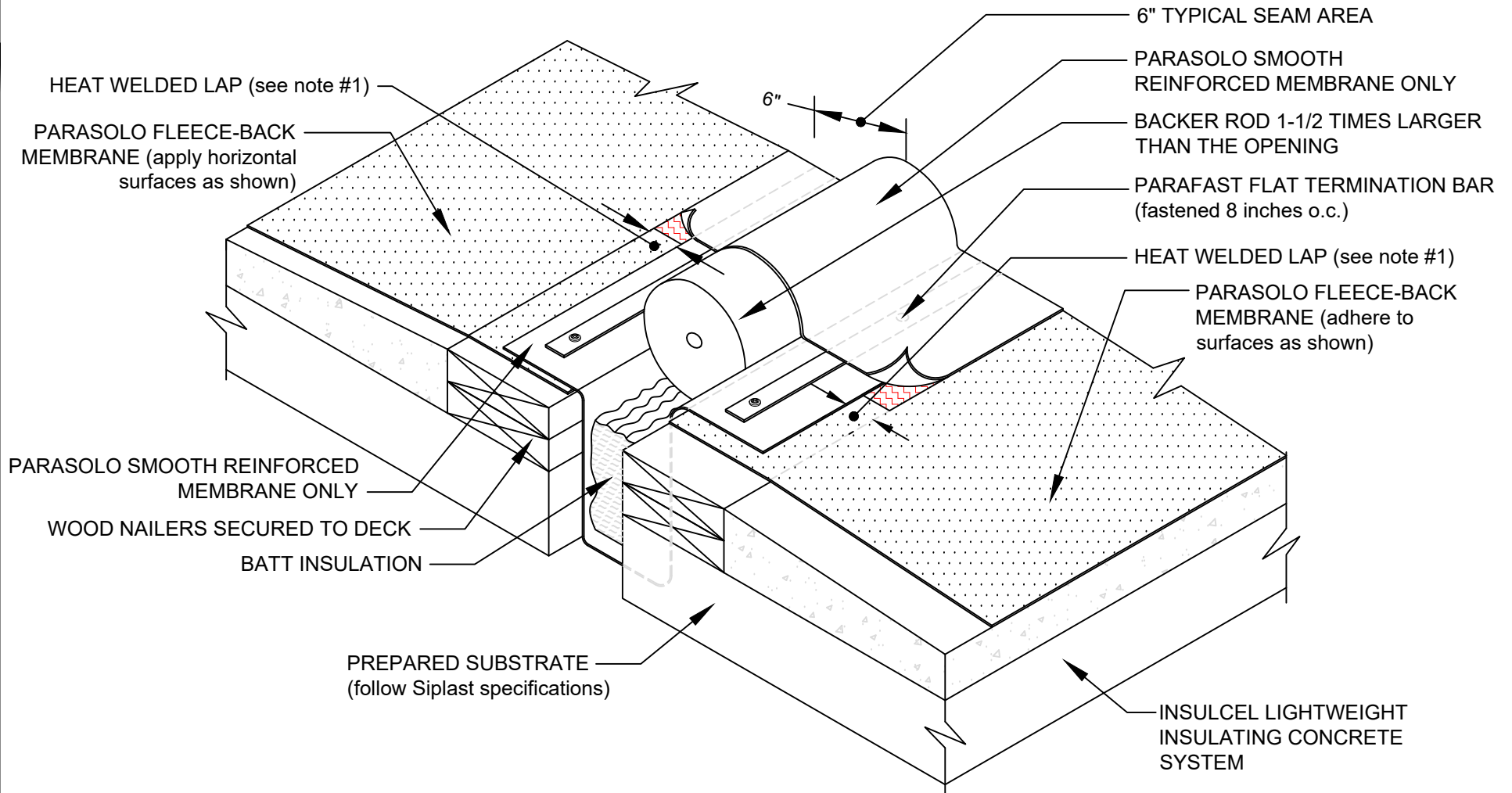


FIELD FABRICATED EXPANSION JOINT - FLAT TYPE

PARASOLO FLEECE BACK MEMBRANE - INSULCEL LIGHTWEIGHT INSULATING CONCRETE

LEGEND	
	HEAT WELD



NOTES:

1. FOR HEAT-WELDING LAPS USE 1" MINIMUM TO 1-1/2" MAXIMUM WELD.
2. REQUIREMENTS AND RECOMMENDATIONS DETAILED IN CURRENT SIPLAST SPECIFICATIONS SHALL APPLY IN ADDITION TO THE ABOVE DRAWING.

Scale: NTS

REF: FIELD FABRICATED EXPANSION JOINT CURB - FLAT - PARASOLO - INSULCEL

Detail Number:
DE-SP-38-06f



14911 Quorum Drive, Suite 600 - Dallas, Texas - 75254 (800) 922-8800

www.siplast.com

Rev: 06.15.2023