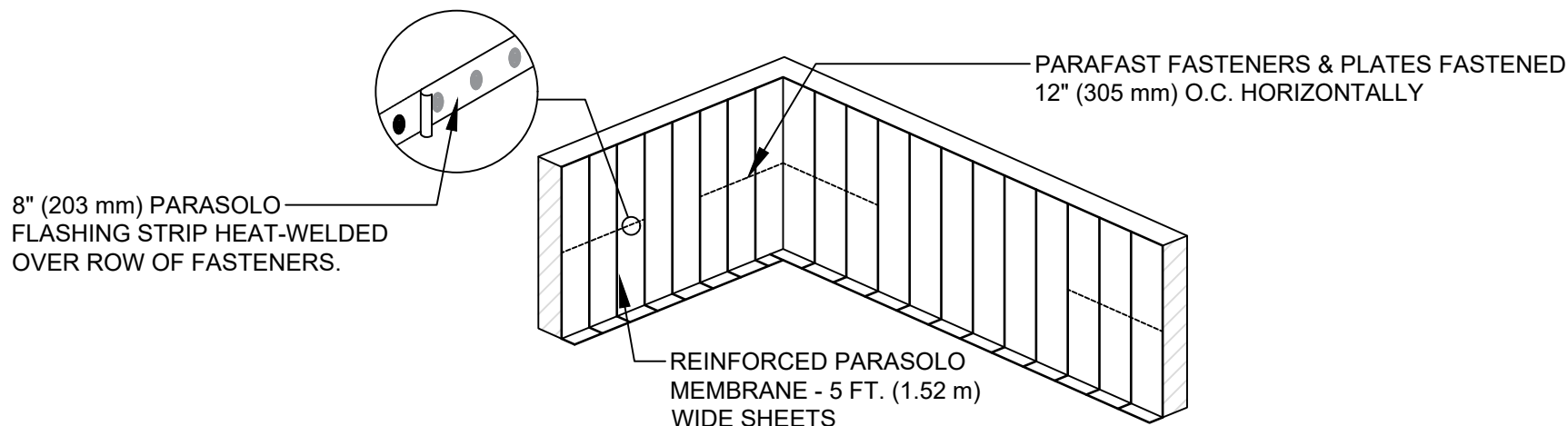


HIGH WALL FLASHING DETAIL WITH INTERMITTENT FASTENING

PARASOLO FLEECE BACK MEMBRANE INSULCEL LIGHTWEIGHT INSULATING CONCRETE

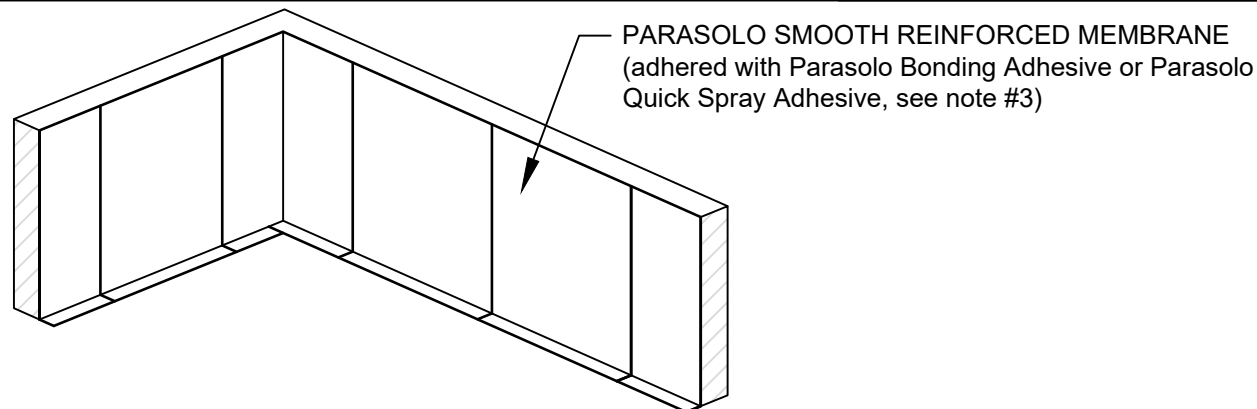


NOTE:

1. FIRST THREE SHEETS FROM THE CORNER AND FIRST THREE SHEETS FROM THE WALL EDGE REQUIRE A ROW OF PARAFAST FASTENERS & PLATES 12" O.C. MID WAY UP THE WALL AS SHOWN.

**REFERENCE PARASOLO HIGH WALL FLASHING
DETAIL FOR 5' (1.52 m) WIDE SHEETS**

**REFERENCE PARASOLO HIGH WALL FLASHING
DETAIL FOR 10' (3.05 m) WIDE SHEETS**



NOTES:

1. FIRST SHEET FROM THE CORNER AND FIRST SHEET FROM THE WALL EDGE ARE 10' (3.05 m) WIDE. ALL SHEETS IN BETWEEN ARE 20' (6.10 m) WIDE.
2. PARASOLO BONDING ADHESIVE CAN BE USED UP TO A MAXIMUM FLASHING HEIGHT OF 54 INCHES. ADDITIONAL TERMINATION IS REQUIRED FOR FLASHING HEIGHTS ABOVE 54 INCHES WHEN PARASOLO BONDING ADHESIVE IS USED. CONTACT THE SIPLAST TECHNICAL DEPARTMENT FOR ADDITIONAL INFORMATION.

Scale: NTS

REF: HIGH WALL FLASHING DETAIL WITH INTERMITTENT FLASHING - PARASOLO - INSULCEL

Detail Number:
DE-SP-38-05q



14911 Quorum Drive, Suite 600 - Dallas, Texas - 75254 (800) 922-8800

www.siplast.com

Rev: 06.15.2023