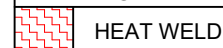


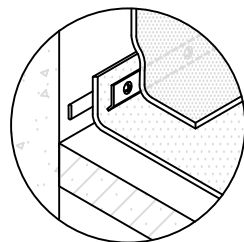
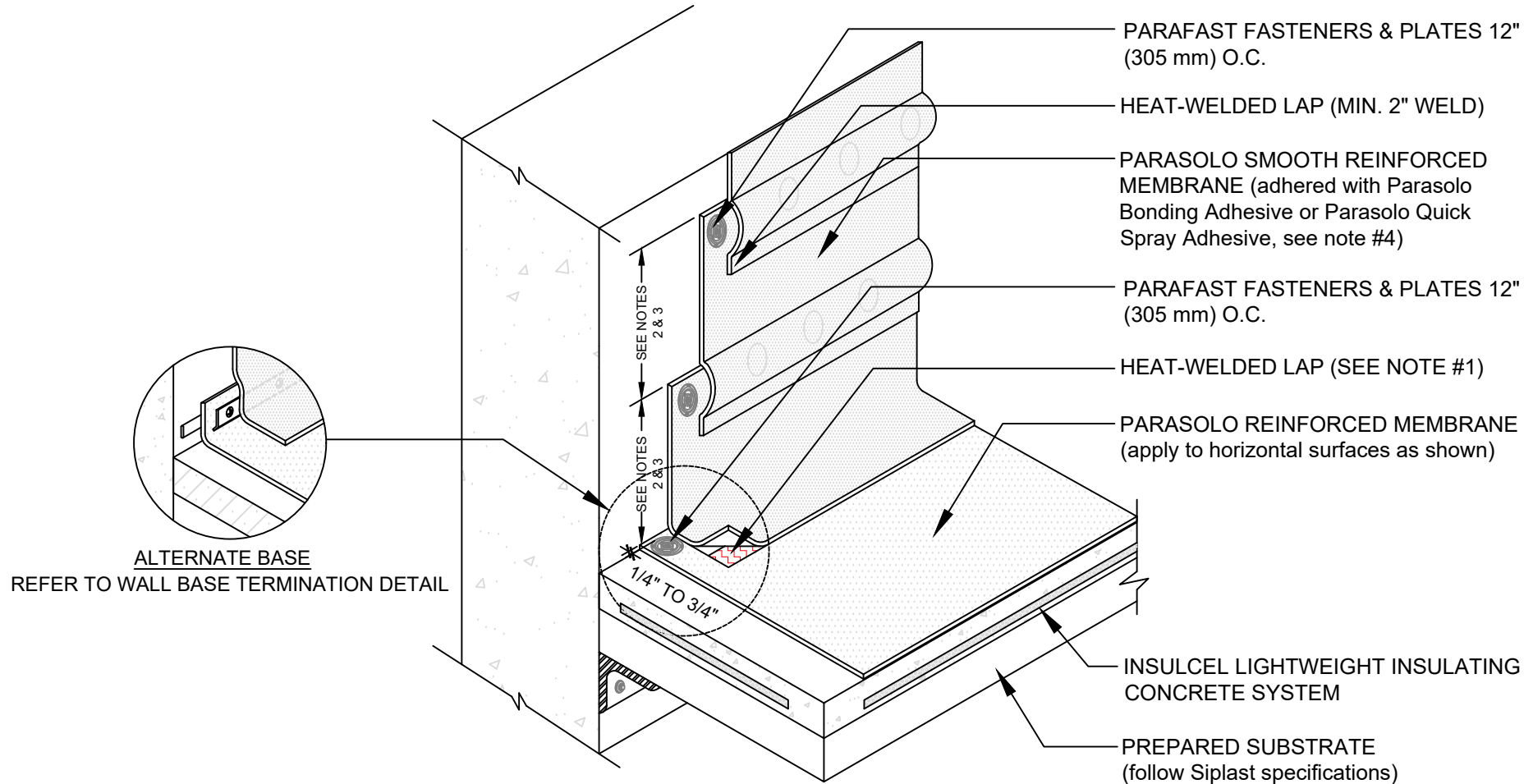
HIGH WALL FLASHING DETAIL WITH PLATES AND FASTENERS

PARASOLO FLEECE BACK MEMBRANE INSULCEL LIGHTWEIGHT INSULATING CONCRETE

LEGEND



HEAT WELD



ALTERNATE BASE

REFER TO WALL BASE TERMINATION DETAIL

NOTES:

1. FOR HEAT-WELDING LAPS USE 1" MINIMUM WELD TO 1-1/2" MAXIMUM WELD.
2. 54" (1.37 M) MAX. DIMENSION FOR FULLY ADHERED FLASHINGS.
3. REQUIREMENTS AND RECOMMENDATIONS DETAILED IN CURRENT SIPLAST SPECIFICATIONS SHALL APPLY IN ADDITION TO THE ABOVE DRAWING.
4. PARASOLO BONDING ADHESIVE CAN BE USED UP TO A MAXIMUM FLASHING HEIGHT OF 54 INCHES. ADDITIONAL TERMINATION IS REQUIRED FOR FLASHING HEIGHTS ABOVE 54 INCHES WHEN PARASOLO BONDING ADHESIVE IS USED. CONTACT THE SIPLAST TECHNICAL DEPARTMENT FOR ADDITIONAL INFORMATION.

Scale: NTS

REF: HIGH WALL FLASHING WITH PLATED AND FASTENERS - PARASOLO - INSULCEL

Detail Number:
DE-SP-38-05p



14911 Quorum Drive, Suite 600 - Dallas, Texas - 75254 (800) 922-8800

www.siplast.com

Rev: 06.15.2023