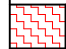



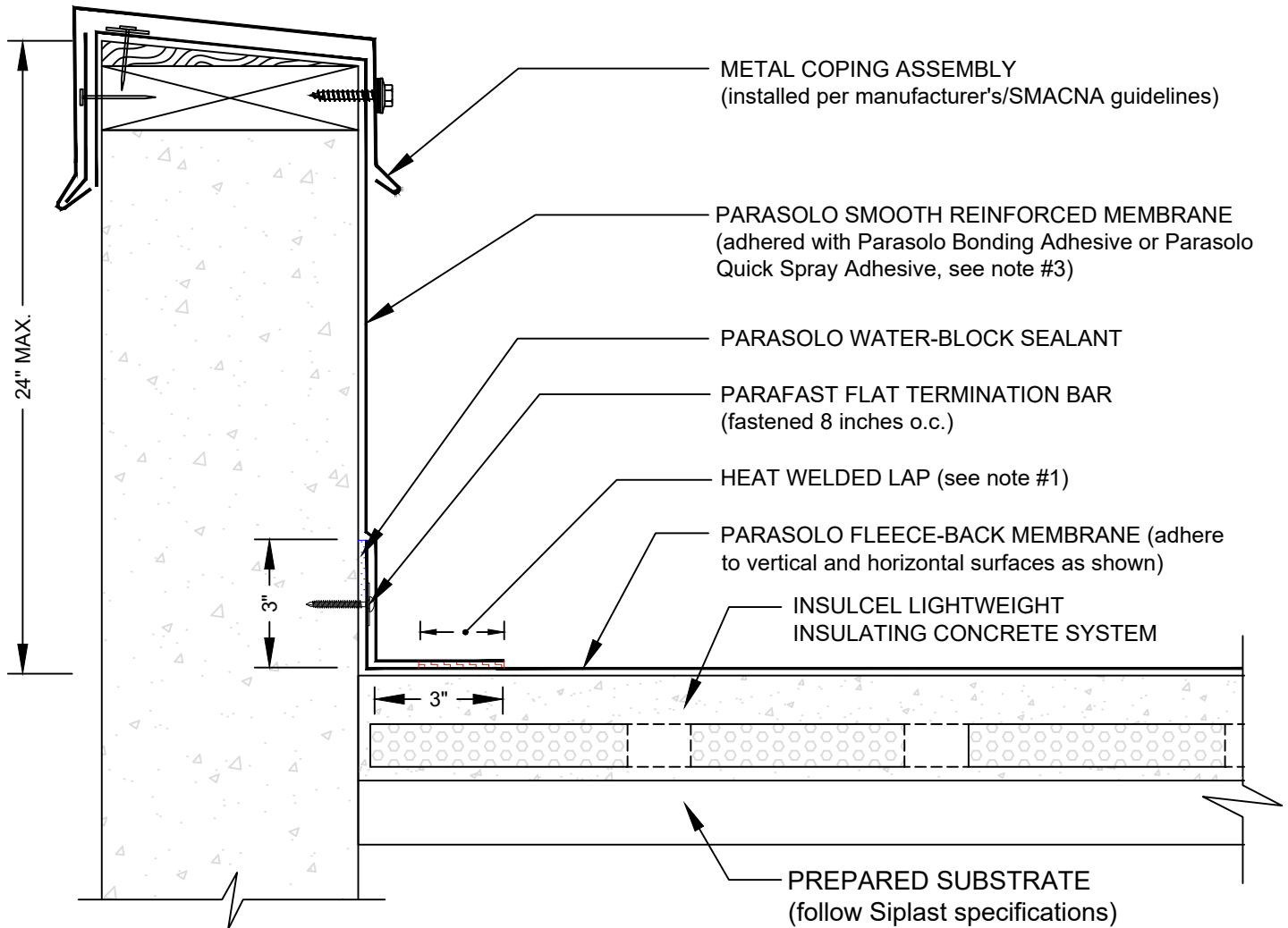
PARAPET WITH COPING

PARASOLO FLEECE BACK MEMBRANE INSULCEL

LIGHTWEIGHT INSULATING CONCRETE

LEGEND

	HEAT WELD
	SEALANT



NOTES:

1. FOR HEAT-WELDING LAPS USE 1" MINIMUM WELD TO 1-1/2" MAXIMUM WELD.
2. REQUIREMENTS AND RECOMMENDATIONS DETAILED IN CURRENT SIPLAST SPECIFICATIONS SHALL APPLY IN ADDITION TO THE ABOVE DRAWING.
3. PARASOLO BONDING ADHESIVE CAN BE USED UP TO A MAXIMUM FLASHING HEIGHT OF 54 INCHES. ADDITIONAL TERMINATION IS REQUIRED FOR FLASHING HEIGHTS ABOVE 54 INCHES WHEN PARASOLO BONDING ADHESIVE IS USED. CONTACT THE SIPLAST TECHNICAL DEPARTMENT FOR ADDITIONAL INFORMATION.

Scale: NTS

REF: PARAPET COPING - PARASOLO - INSULCEL

14911 Quorum Drive, Suite 600 - Dallas, Texas - 75254

(800) 922-8800

www.siplast.com



Detail Number:
DE-SP-38-05a

Rev: 06.15.2023