

# COATED METAL ROOF EDGE JOINT TREATMENT

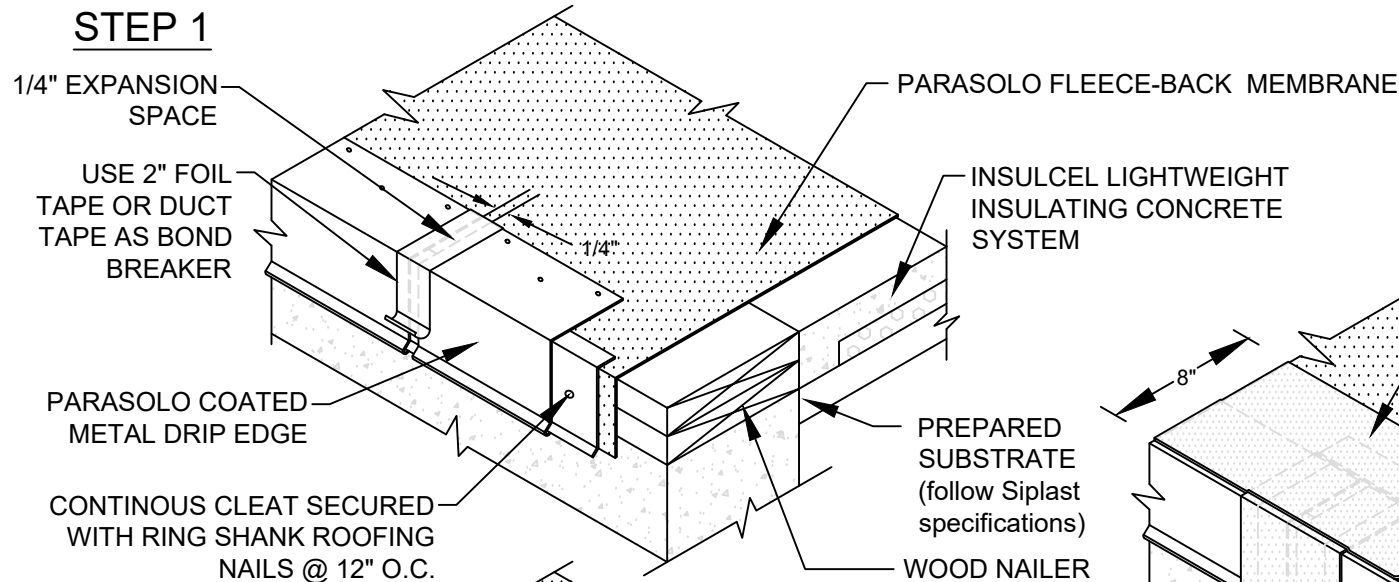
## PARASOLO FLEECE BACK MEMBRANE - INSULCEL LIGHTWEIGHT INSULATING CONCRETE

LEGEND

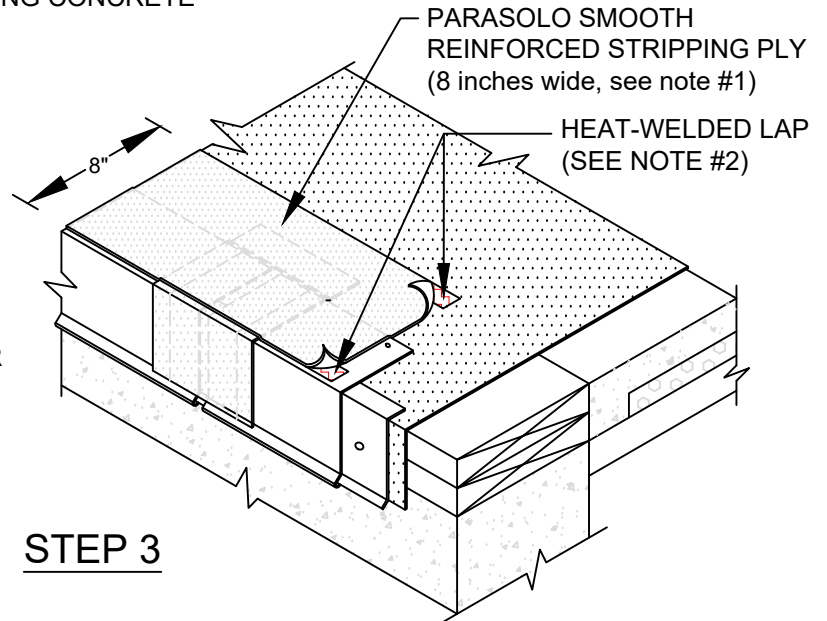
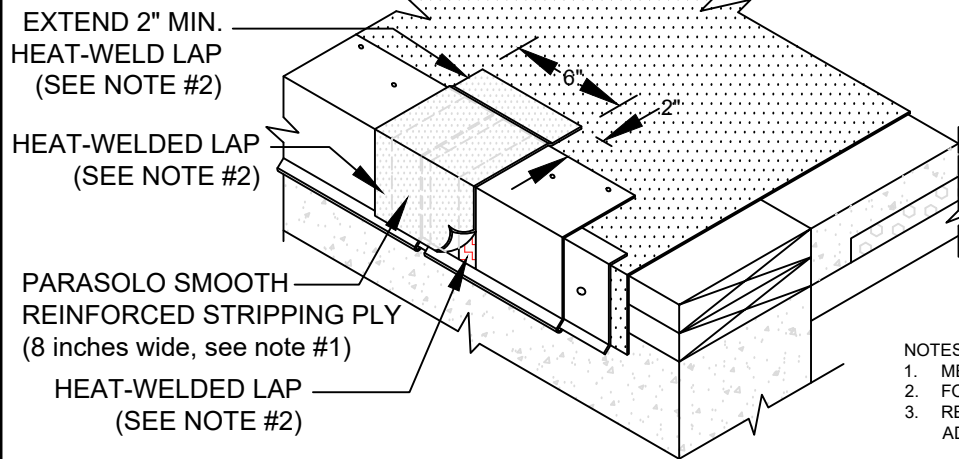


HEAT WELD

### STEP 1



### STEP 2



### STEP 3

#### NOTES:

1. METAL EDGE AND PARASOLO STRIPPING PLY SHOULD BE INSTALLED TOGETHER IN A SAME-DAY APPLICATION.
2. FOR HEAT-WELDING LAPS USE 1" MINIMUM WELD TO 1-1/2" MAXIMUM WELD.
3. REQUIREMENTS AND RECOMMENDATIONS DETAILED IN CURRENT SIPLAST SPECIFICATIONS SHALL APPLY IN ADDITION TO THE ABOVE DRAWING.

Scale: NTS

REF: COATED METAL EDGE JOINT - PARASOLO - INSULCEL

Detail Number:  
DE-SP-38-04e



14911 Quorum Drive, Suite 600 - Dallas, Texas - 75254 (800) 922-8800

[www.siplast.com](http://www.siplast.com)

Rev: 06.15.2023