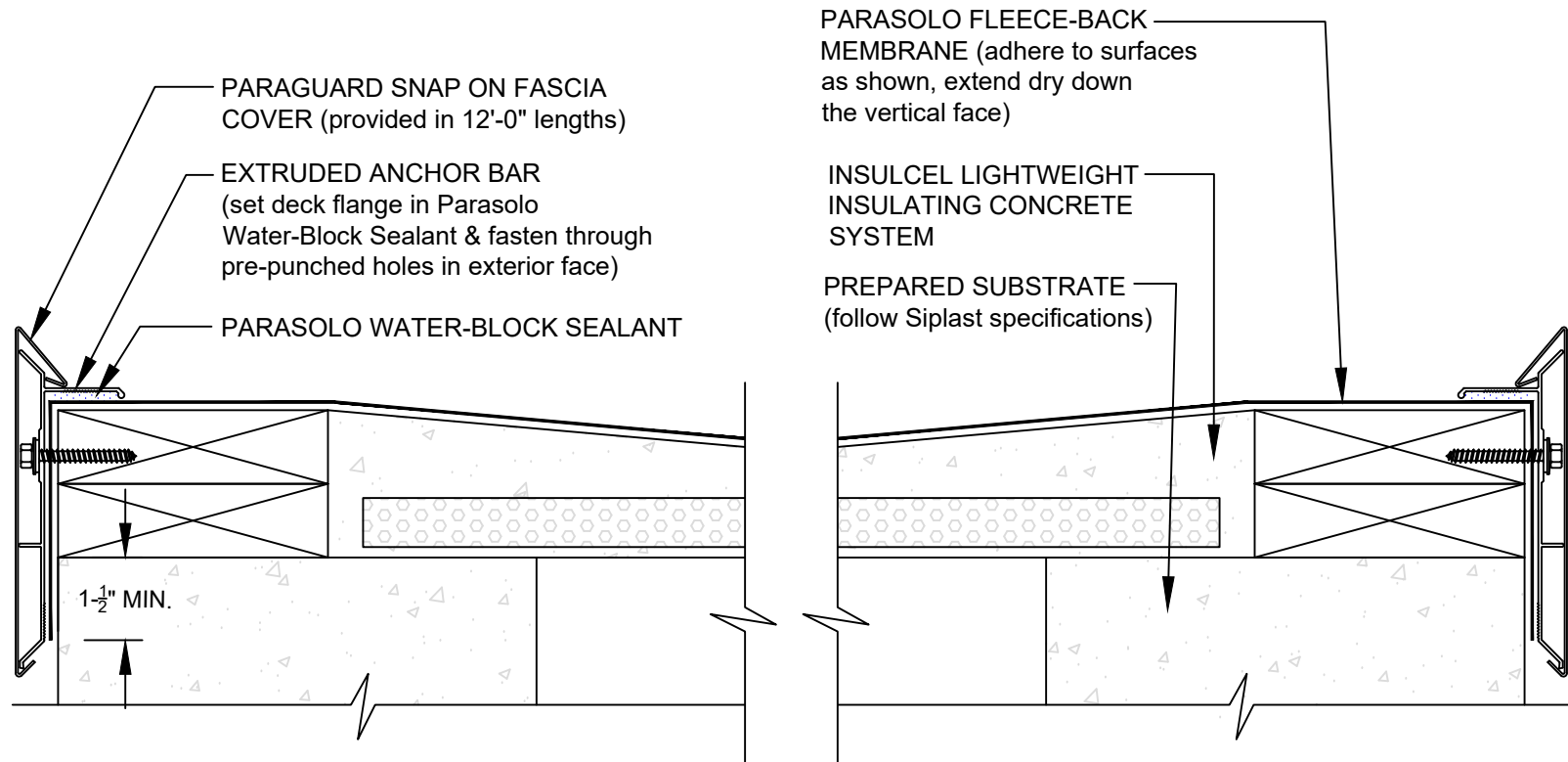


PARAGUARD EXTRUDED EDGE AT SYSTEM

PARASOLO FLEECE BACK MEMBRANE - INSULCEL LIGHTWEIGHT INSULATING CONCRETE

LEGEND

SEALANT



NOTES:

1. FASCIA FASTENERS ARE PROVIDED WITH THE PARAGUARD EXTRUDED EDGE SYSTEM..
2. THE PARAGUARD EXTRUDED EDGE SYSTEM DOES NOT ALLOW FOR DRAINAGE AT THE ROOF EDGE; APPROPRIATE SLOPE SHOULD BE PROVIDED AWAY FROM EDGE AND TOWARDS INTERNAL ROOF DRAINS.
3. REQUIREMENTS AND RECOMMENDATIONS DETAILED IN CURRENT SIPLAST SPECIFICATIONS SHALL APPLY IN ADDITION TO THE ABOVE DRAWING.

Scale: NTS

REF: PGUARD EXTRUDED EDGE - PARASOLO - INSULATED

Detail Number:
DE-SP-38-04b



14911 Quorum Drive, Suite 600 - Dallas, Texas - 75254 (800) 922-8800

www.siplast.com

Rev: 06.15.2023