



# PARAGUARD COATED ROOF DRAIN

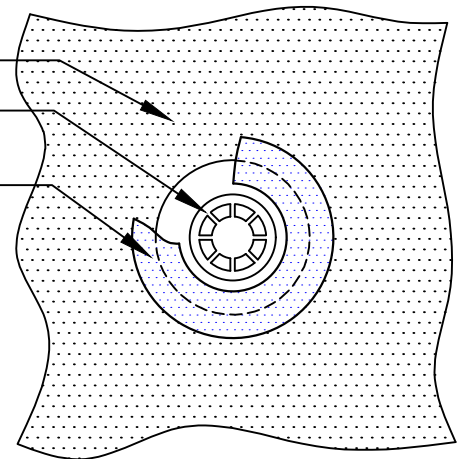
## PARASOLO FLEECE BACK MEMBRANE - INSULCEL LIGHTWEIGHT INSULATING CONCRETE

LEGEND	
	HEAT WELD
	SEALANT

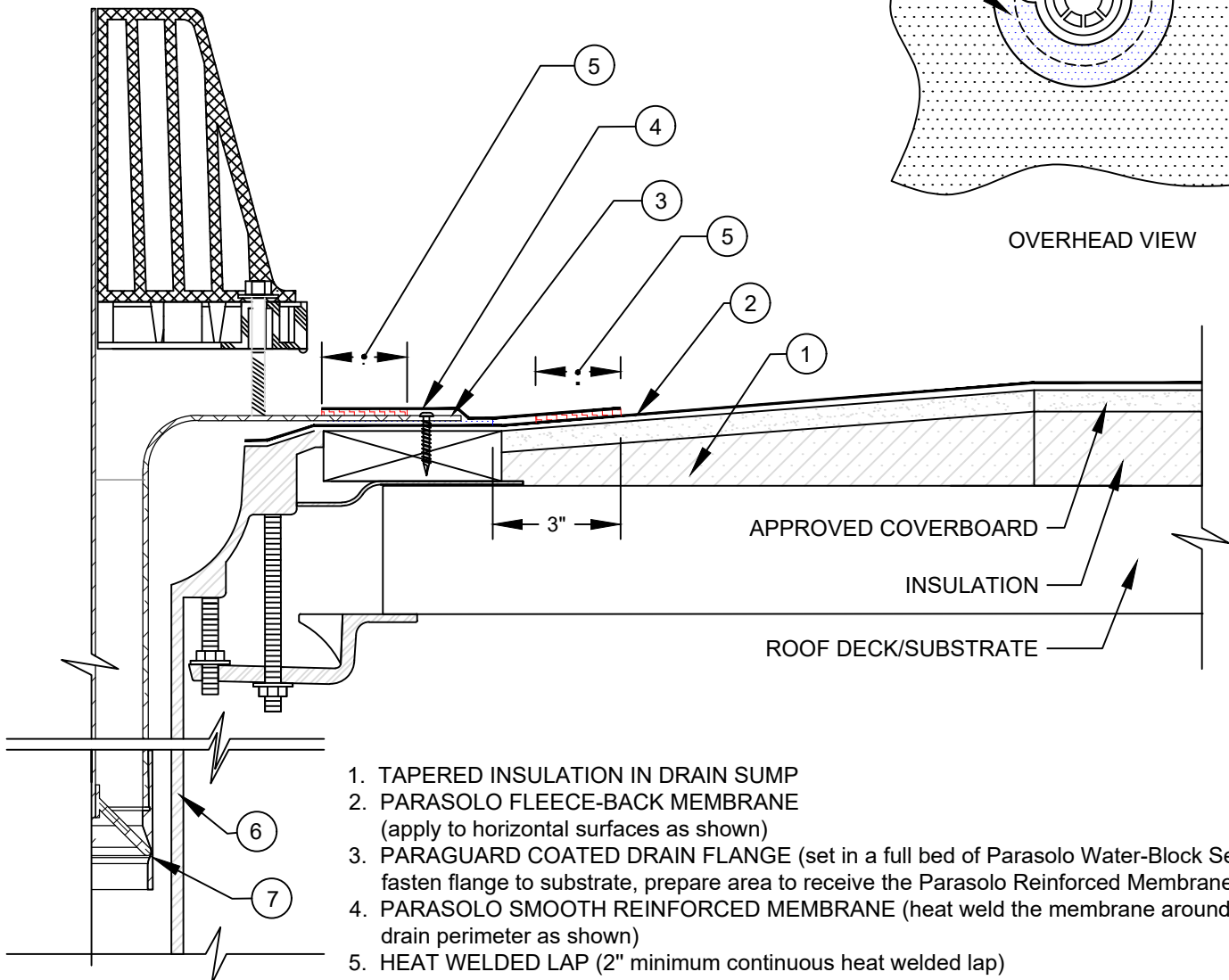
PARASOLO FLEECE-BACK MEMBRANE  
(apply to horizontal surfaces)

STRAINER & CLAMPING RING

PARASOLO SMOOTH REINFORCED MEMBRANE  
(heat weld the membrane around the drain perimeter)



OVERHEAD VIEW



1. TAPERED INSULATION IN DRAIN SUMP
2. PARASOLO FLEECE-BACK MEMBRANE  
(apply to horizontal surfaces as shown)
3. PARAGUARD COATED DRAIN FLANGE (set in a full bed of Parasolo Water-Block Sealant,  
fasten flange to substrate, prepare area to receive the Parasolo Reinforced Membrane)
4. PARASOLO SMOOTH REINFORCED MEMBRANE (heat weld the membrane around the  
drain perimeter as shown)
5. HEAT WELDED LAP (2" minimum continuous heat welded lap)
6. DRAIN LEADER
7. U-FLOW SEAL

### NOTES:

1. FOLLOW SIPLAST SPECIFICATIONS FOR INSTALLATION OF PARAGUARD ROOF DRAIN COMPONENTS.
2. THE MEMBRANE MUST COVER AND EXTEND BEYOND THE FASTENER HEADS.
3. REQUIREMENTS AND RECOMMENDATIONS DETAILED IN THE CURRENT SIPLAST SPECIFICATIONS SHALL APPLY IN ADDITION TO THE ABOVE DRAWING.

Scale: NTS

REF: PARAGUARD COATED DRAIN - PARASOLO - INSULCEL

14911 Quorum Drive, Suite 600 - Dallas, Texas - 75254

(800) 922-8800

[www.siplast.com](http://www.siplast.com)

Detail Number:  
DE-SP-38-02e

Rev: 06.15.2023

