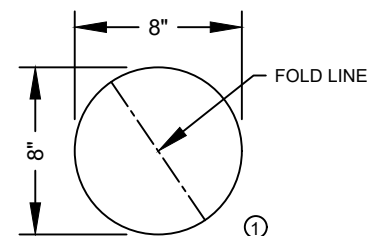
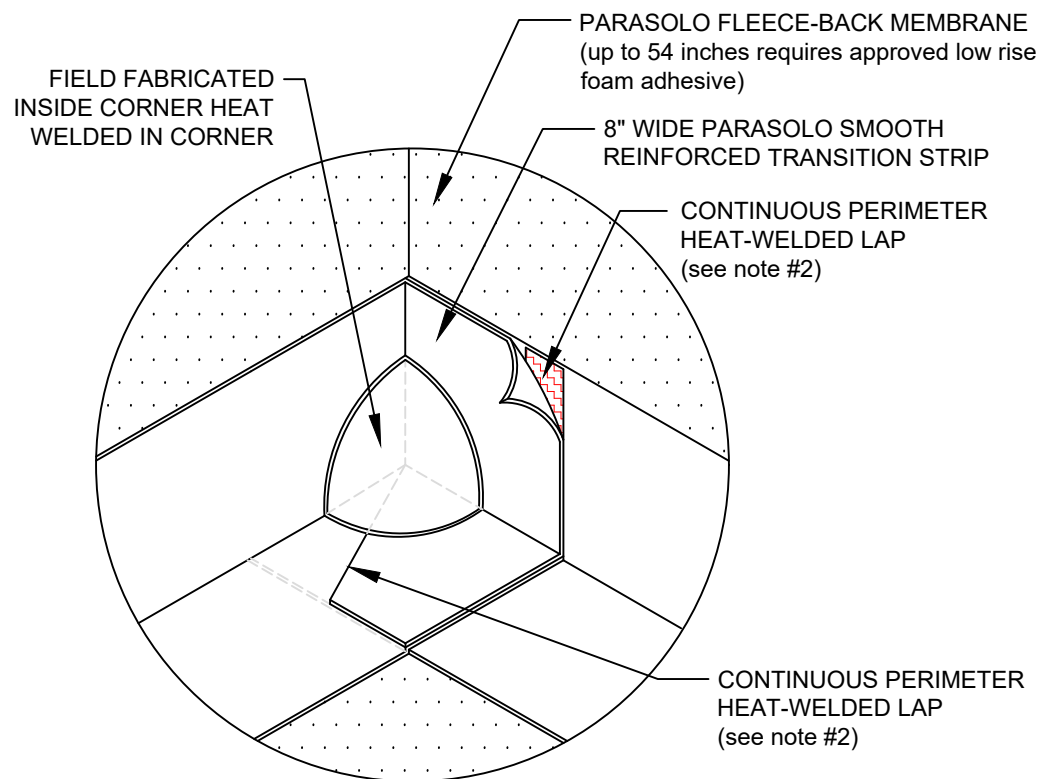
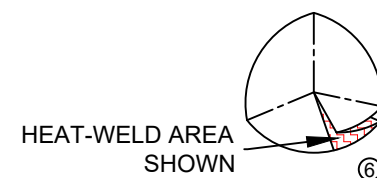
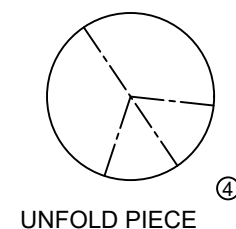
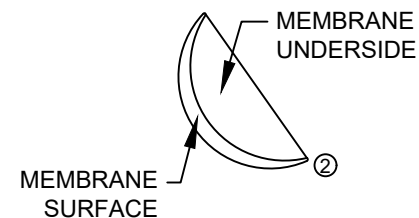
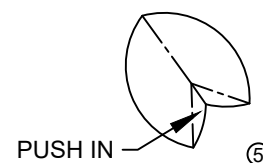
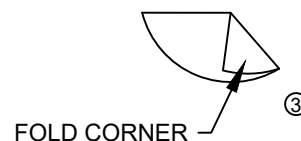


INSIDE CORNER REINFORCEMENT - FIELD FABRICATED PARASOLO HYBRID SYSTEM - INSULATED

LEGEND	
	HEAT WELD



CUT A SECTION OF NON-REINFORCED PARASOLO MEMBRANE. FOLD ALONG LINE AS INDICATED.



NOTES:

1. INSIDE CORNERS SHOULD BE FIELD-FABRICATED USING UNREINFORCED SMOOTH MEMBRANE.
2. FOR HEAT-WELDING LAPS USE 1" MINIMUM WELD TO 1-1/2" MAXIMUM WELD.
3. REQUIREMENTS AND RECOMMENDATIONS DETAILED IN CURRENT SIPLAST SPECIFICATIONS SHALL APPLY IN ADDITION TO THE ABOVE DRAWING.

CAUTION: SIPLAST RECOMMENDS THAT ALL PRACTICES PERTAINING TO INDUSTRY STANDARD TORCH SAFETY REQUIREMENTS AND GUIDELINES BE FOLLOWED. THIS INCLUDES PERFORMING A FIRE WATCH FOLLOWING ANY TORCH APPLICATIONS. ALWAYS HAVE APPROVED FIRE EXTINGUISHING EQUIPMENT NEARBY WHEN USING A TORCH.

Scale: NTS

REF: FIELD FABRICATED EXPANSION JOINT - PARASOLO - P20 - INSULATED

Detail Number:
DE-SP-37-15c



14911 Quorum Drive, Suite 600 - Dallas, Texas - 75254 (800) 922-8800

www.siplast.com

Rev: 06.06.2023