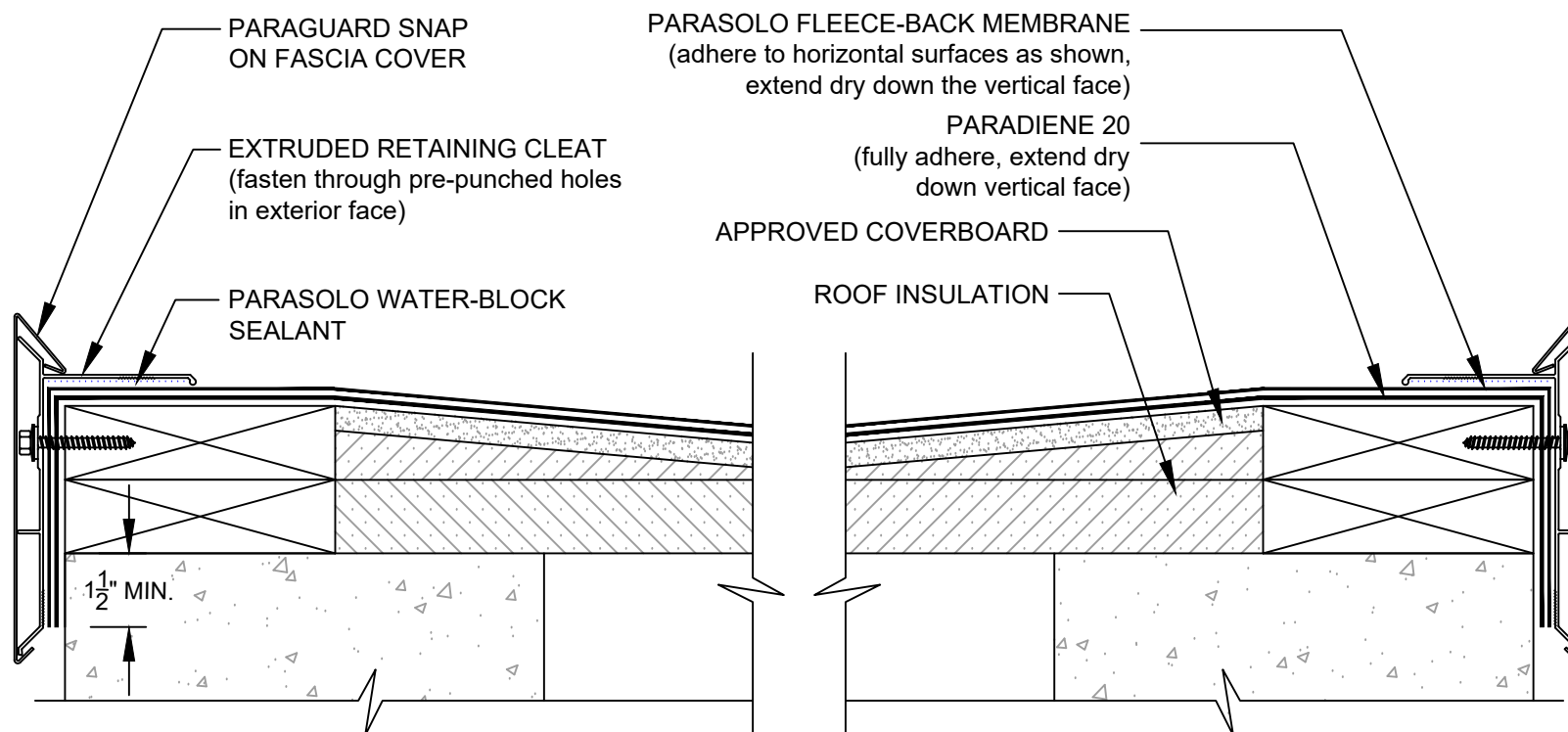


PARAGUARD EXTRUDED EDGE SYSTEM

PARASOLO HYBRID SYSTEMS - INSULATED

LEGEND

SEALANT



NOTES:

1. FASCIA FASTENERS ARE PROVIDED WITH THE PARAGUARD EXTRUDED EDGE SYSTEM.
2. THE PARAGUARD EXTRUDED EDGE SYSTEM DOES NOT ALLOW FOR DRAINAGE AT THE ROOF EDGE; APPROPRIATE SLOPE SHOULD BE PROVIDED AWAY FROM EDGE AND TOWARDS INTERNAL ROOF DRAINS.
3. REQUIREMENTS AND RECOMMENDATIONS DETAILED IN CURRENT SIPLAST SPECIFICATIONS SHALL APPLY IN ADDITION TO THE ABOVE DRAWING.

CAUTION: SIPLAST RECOMMENDS THAT ALL PRACTICES PERTAINING TO NRCA CERTA GUIDELINES BE FOLLOWED WHEN TORCHING METHODS ARE EMPLOYED. THIS INCLUDES PERFORMING A FIRE WATCH FOLLOWING ANY TORCH APPLICATIONS. ALWAYS HAVE APPROVED FIRE-EXTINGUISHING EQUIPMENT NEARBY.

Scale: NTS

REF: PARAGUARD EXTRUDED EDGE - PARASOLO - P20 - INSULATED

Detail Number:
DE-SP-37-04b



14911 Quorum Drive, Suite 600 - Dallas, Texas - 75254 (800) 922-8800

www.siplast.com

Rev: 06.06.2023