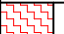
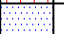
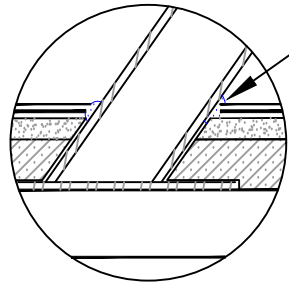


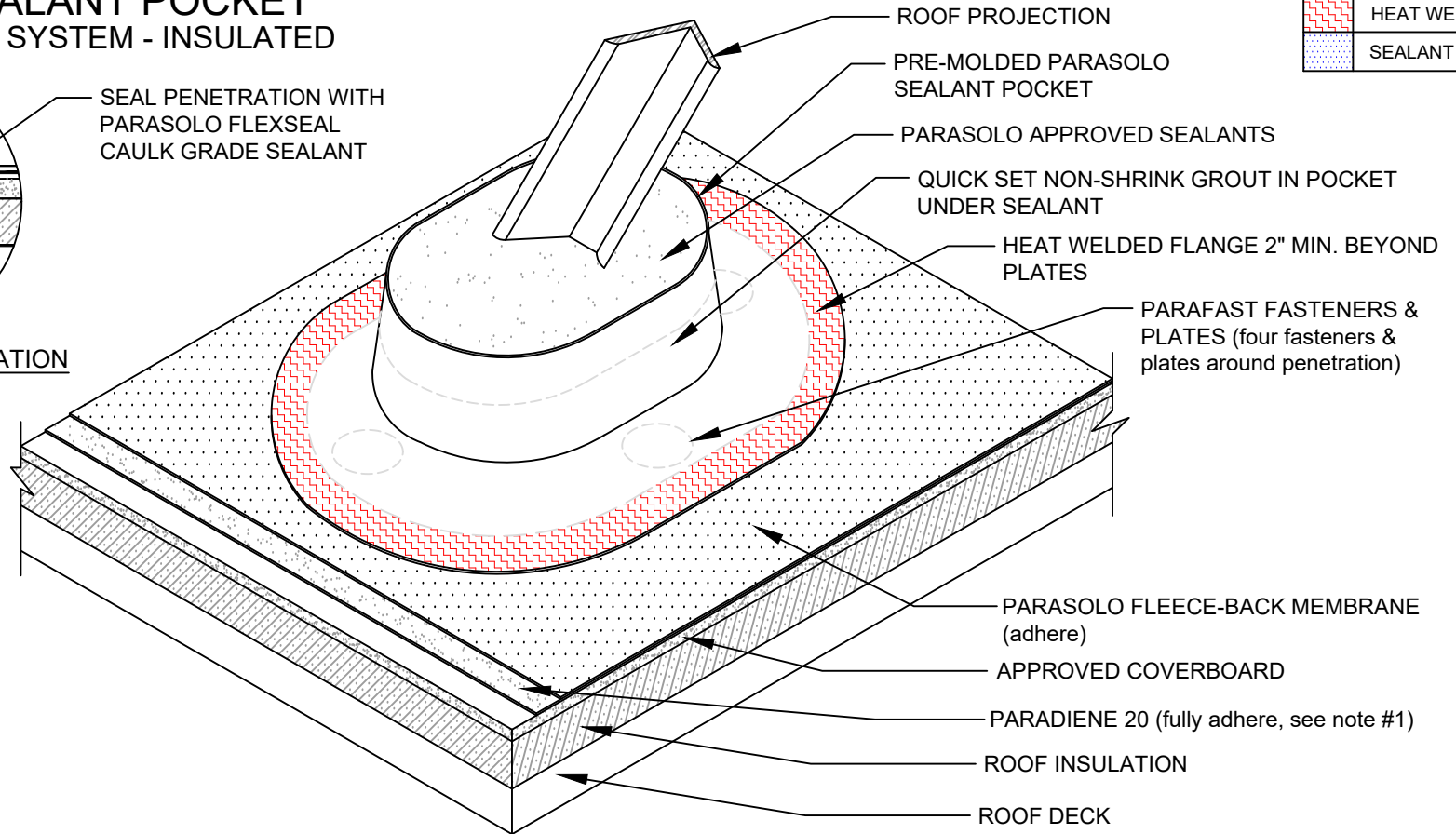
POURABLE SEALANT POCKET PARASOLO HYBRID SYSTEM - INSULATED

LEGEND	
	HEAT WELD
	SEALANT



SEAL PENETRATION WITH
PARASOLO FLEXSEAL
CAULK GRADE SEALANT

SECTION @ PENETRATION



NOTES:

1. PARADIENE 20 SHOULD BE SEALED USING PARASOLO FLEXSEAL SEALANT FOR EXPOSED PARADIENE IN PHASE CONSTRUCTION INSTALLATIONS.
2. ALLOW 2 INCHES OF CLEARANCE AROUND THE PROJECTION. IF MULTIPLE PROJECTIONS, ALLOW 1 INCH BETWEEN PROJECTION & POCKET.
3. THE EXISTING PROJECTION MUST BE CLEAN OF ALL DEBRIS BEFORE INSTALLATION.
4. IF SEALANT POCKET MUST BE CUT, STRIP IN CUT WITH AN UNREINFORCED PARASOLO STRIP 4 INCHES MIN. WIDE AND EXTEND ONTO THE FIELD MEMBRANE A MINIMUM OF 2 INCHES.
5. IF PLATES AND FASTENERS ENCROACH INTO THE SEAM AREA OF THE POCKET, THEN A TARGET MUST BE ADDED FIRST TO COVER THE FASTENERS.
6. REQUIREMENTS AND RECOMMENDATIONS DETAILED IN CURRENT SIPLAST SPECIFICATIONS SHALL APPLY IN ADDITION TO THE ABOVE DRAWING.

CAUTION: SIPLAST RECOMMENDS THAT ALL PRACTICES PERTAINING TO INDUSTRY STANDARD TORCH SAFETY REQUIREMENTS AND GUIDELINES BE FOLLOWED. THIS INCLUDES PERFORMING A FIRE WATCH FOLLOWING ANY TORCH APPLICATIONS. ALWAYS HAVE APPROVED FIRE EXTINGUISHING EQUIPMENT NEARBY WHEN USING A TORCH.

Scale: NTS

REF: POURABLE SEALANT POCKET - PARASOLO - P20 - INSULATED

Detail Number:
DE-SP-37-03i



14911 Quorum Drive, Suite 600 - Dallas, Texas - 75254 (800) 922-8800

www.siplast.com

Rev: 06.06.2023