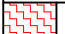

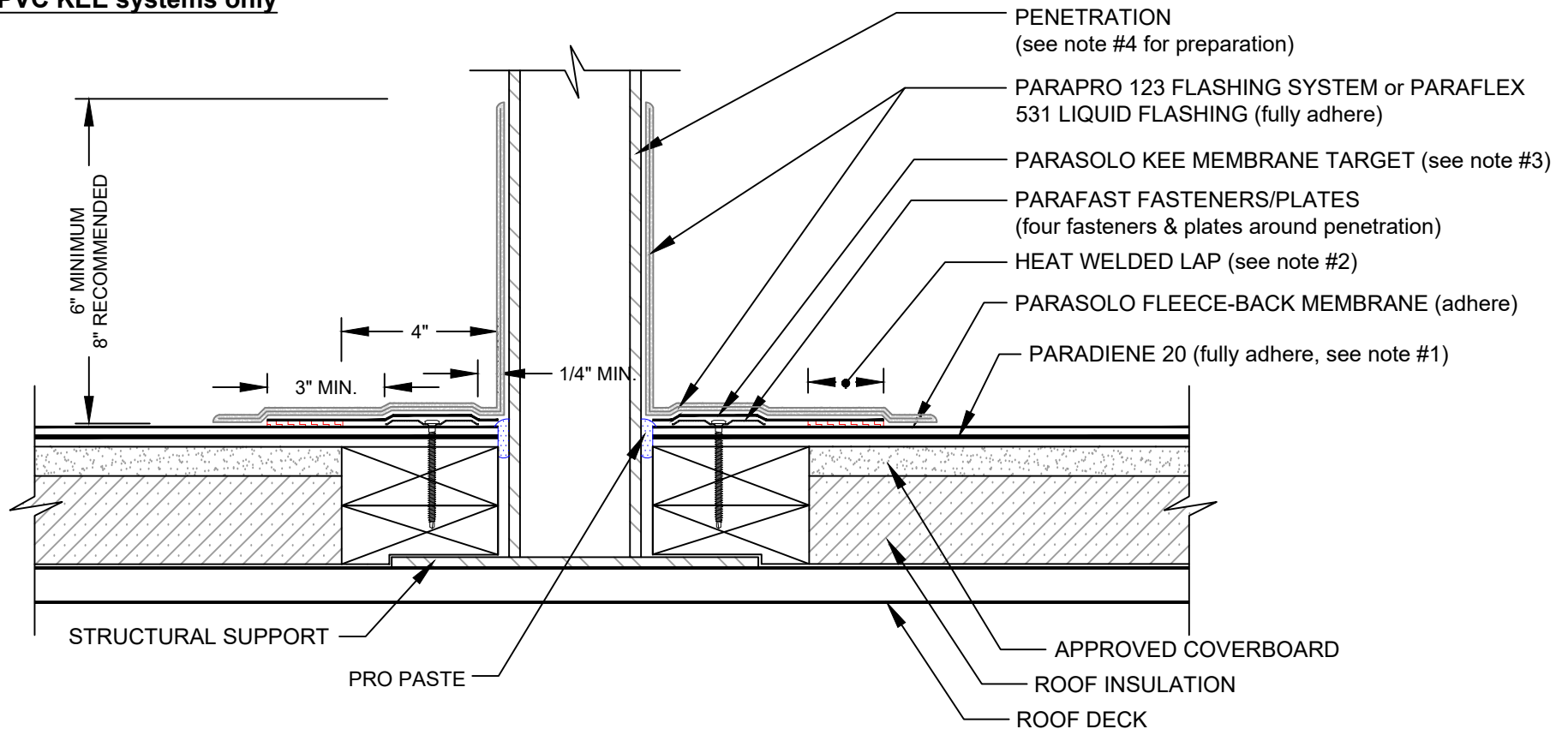


PENETRATION WITH LIQUID FLASHING

PARASOLO HYBRID SYSTEM - INSULATED

**Note: This detail applies to PVC
and PVC KEE systems only**

LEGEND	
	HEAT WELD
	SEALANT



NOTES:

1. PARADIENE 20 SHOULD BE SEALED USING PARASOLO FLEXSEAL SEALANT FOR EXPOSED PARADIENE IN PHASE CONSTRUCTION INSTALLATIONS.
2. FOR HEAT-WELDING LAPS USE 1" MINIMUM WELD TO 1-1/2" MAXIMUM WELD.
3. PARAFLEX 531 LIQUID FLASHING CAN BE UTILIZED WITH PARASOLO PVC KEE ONLY.
4. REFER TO SIPLAST PREPARATION GUIDELINES FOR PROPER SURFACE TREATMENT OF ALL MATERIALS PRIOR TO APPLICATION OF PARAPRO OR PARAFLEX 531 LIQUID FLASHING MATERIALS.
5. PENETRATIONS TO RECEIVE THE PARAPRO 123 FLASHING SYSTEM OR PARAFLEX 531 LIQUID FLASHING MUST BE SECURED TO THE STRUCTURE TO PREVENT MOVEMENT.
6. REQUIREMENTS AND RECOMMENDATIONS DETAILED IN CURRENT SIPLAST SPECIFICATIONS SHALL APPLY IN ADDITION TO THE ABOVE DRAWING.

CAUTION: SIPLAST RECOMMENDS THAT ALL PRACTICES PERTAINING TO INDUSTRY STANDARD TORCH SAFETY REQUIREMENTS AND GUIDELINES BE FOLLOWED. THIS INCLUDES PERFORMING A FIRE WATCH FOLLOWING ANY TORCH APPLICATIONS. ALWAYS HAVE APPROVED FIRE EXTINGUISHING EQUIPMENT NEARBY WHEN USING A TORCH.

Scale: NTS

REF: PENETRATION WITH LIQUID FLASHING - PARASOLO - P20 - INSULATED

Detail Number:
DE-SP-37-03e



14911 Quorum Drive, Suite 600 - Dallas, Texas - 75254 (800) 922-8800

www.siplast.com

Rev: 06.06.2023