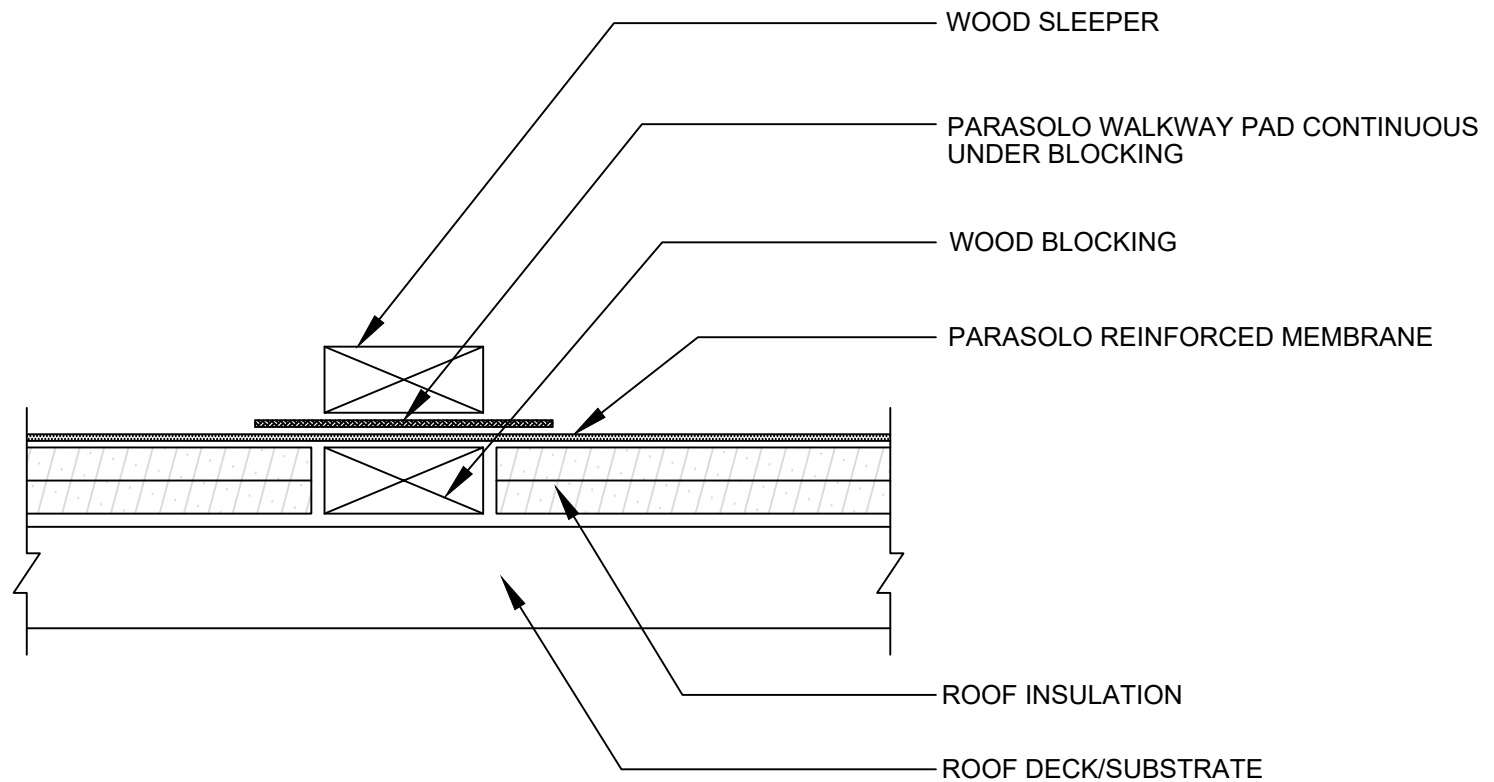


EXPOSED WOOD EQUIPMENT SUPPORT SLEEPER

PARASOLO ROOF MEMBRANE - INSULATED (ALL SYSTEMS)



NOTES:

1. IF THE INSULATION COMPRESSIVE STRENGTH IS INSUFFICIENT FOR THE EQUIPMENT WEIGHT, INSTALL WOOD BLOCKING UNDER THE EQUIPMENT CARRYING WOOD SLEEPER, MATCHING THE HEIGHT OF THE INSULATION.
2. THE CARPENTRY AND METAL WORK SHOWN DEPICTS SHOP FABRICATION AND JOB-SITE ASSEMBLY. THESE COMPONENTS SHOULD BE DESIGNED/FABRICATED/INSTALLED ACCORDING TO GENERALLY ACCEPTED INDUSTRY PRACTICES, STANDARDS, AND APPROVALS.

Scale: NTS

REF: EXPOSED WOOD EQUIPMENT SUPPORT SLEEPER - PARASOLO - INSULATED

Detail Number:
DE-SP-36-10b



14911 Quorum Drive, Suite 600 - Dallas, Texas - 75254 (800) 922-8800

www.siplast.com

Rev: 06.08.2023