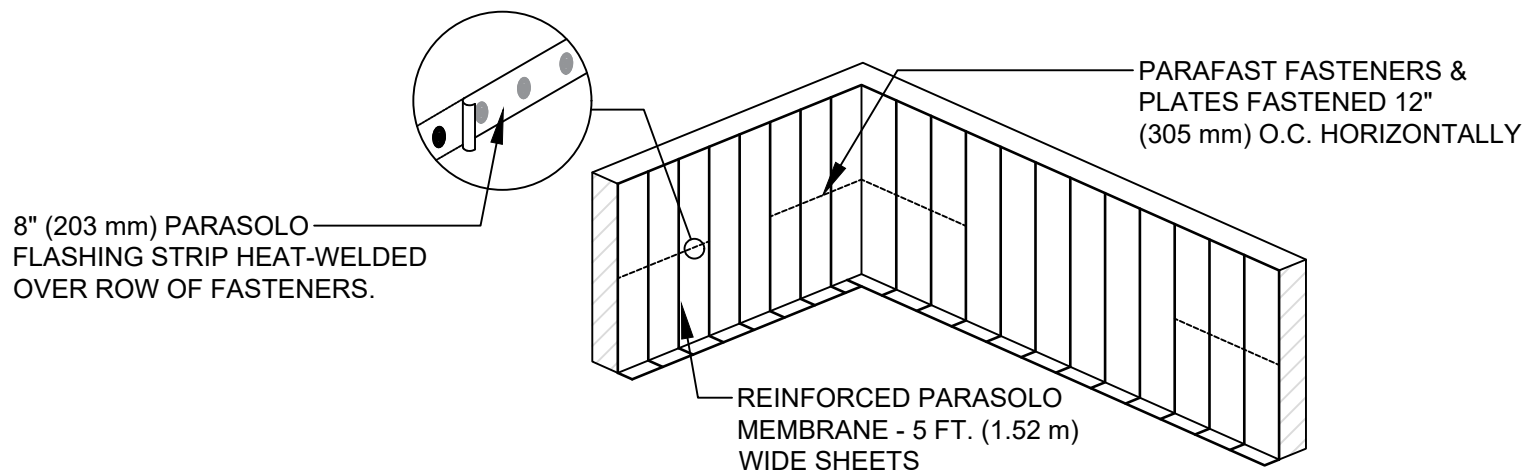


# HIGH WALL FLASHING DETAIL WITH INTERMITTENT FASTENING

## PARASOLO ROOF MEMBRANE - INSULATED (ALL SYSTEMS)

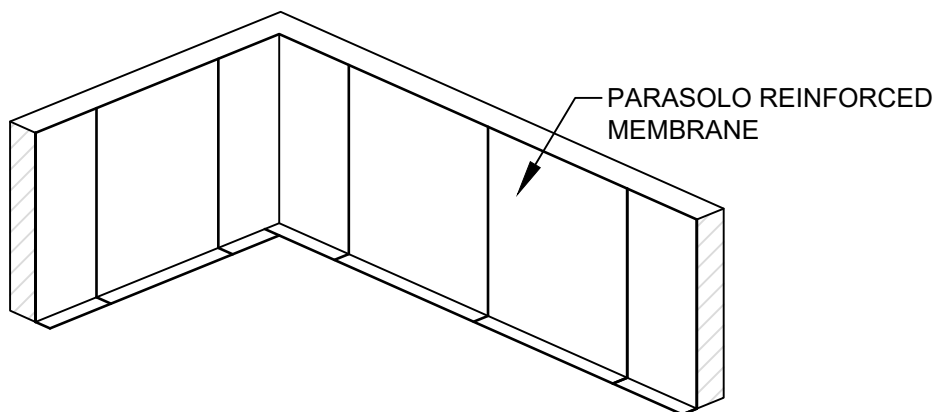


**NOTE:**

1. FIRST THREE SHEETS FROM THE CORNER AND FIRST THREE SHEETS FROM THE WALL EDGE REQUIRE A ROW OF PARAFAST FASTENERS & PLATES 12" O.C. MID WAY UP THE WALL AS SHOWN.

**REFERENCE PARASOLO HIGH WALL FLASHING  
DETAIL FOR 5' (1.52 m) WIDE SHEETS**

**REFERENCE PARASOLO HIGH WALL FLASHING  
DETAIL FOR 10' (3.05 m) WIDE SHEETS**



**NOTE:**

1. FIRST SHEET FROM THE CORNER AND FIRST SHEET FROM THE WALL EDGE ARE 10' (3.05 m) WIDE. ALL SHEETS IN BETWEEN ARE 20' (6.10 m) WIDE.

Scale: NTS

REF: HIGH WALL FLASHING DETAIL WITH INTERMITTENT FLASHING - PARASOLO - INSULATED

**Detail Number:**  
DE-SP-36-05q



14911 Quorum Drive, Suite 600 - Dallas, Texas - 75254 (800) 922-8800

[www.siplast.com](http://www.siplast.com)

**Rev:** 06.08.2023