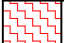
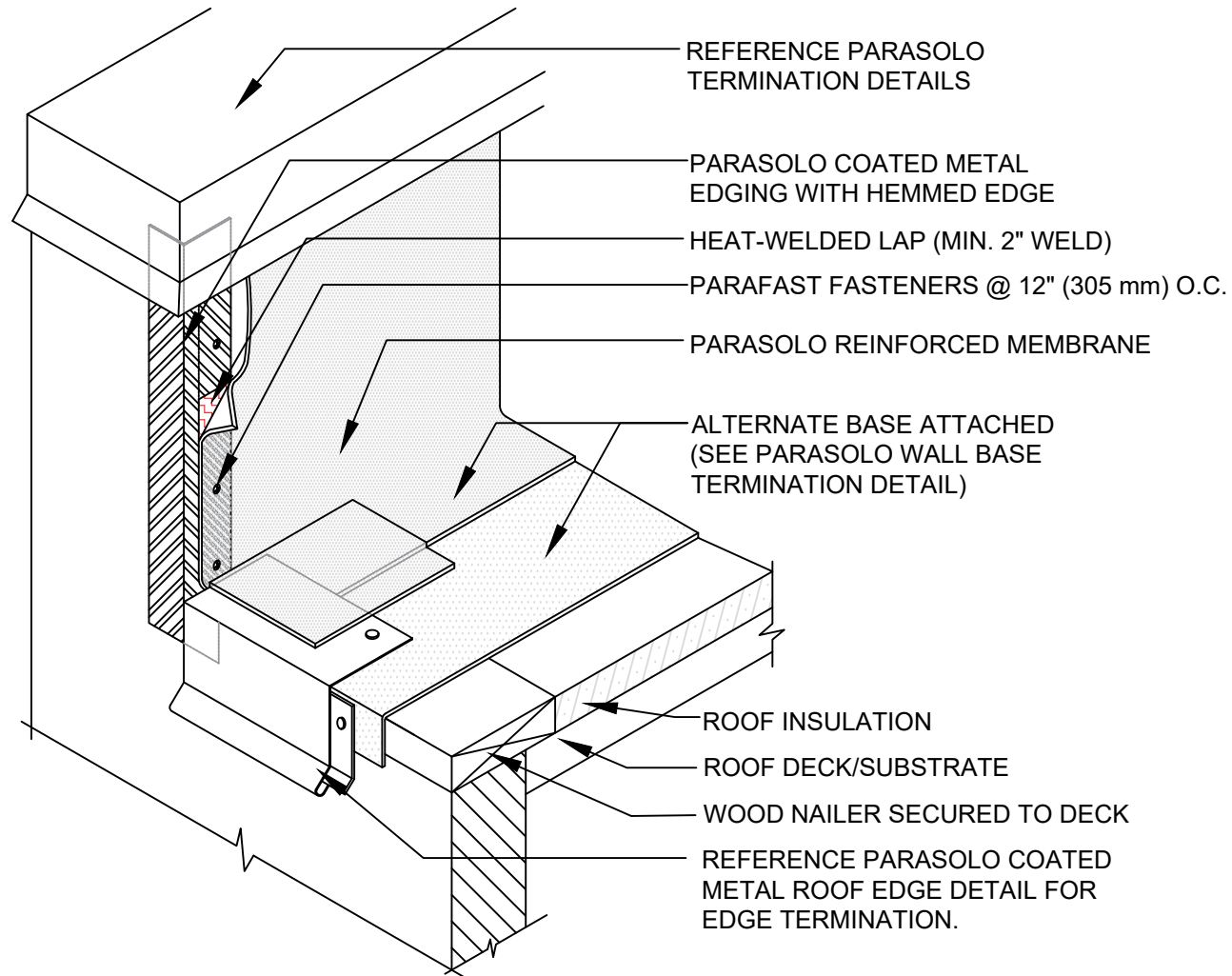


VERTICAL WALL EDGE TERMINATION WITH COATED METAL DETAIL PARASOLO ROOF MEMBRANE - INSULATED (ALL SYSTEMS)

LEGEND	
	HEAT WELD



NOTES:

1. CONTACT THE SIPLAST TECHNICAL DEPARTMENT FOR INFORMATION REGARDING THE APPROPRIATE PROFILES AND GAUGES FOR CLEAT AND PARASOLO METAL.

Scale: NTS

REF: VERTICAL WALL EDGE TERMINATION WITH COATED METAL - PARASOLO - INSULATED

Detail Number:
DE-SP-36-05j



14911 Quorum Drive, Suite 600 - Dallas, Texas - 75254 (800) 922-8800

www.siplast.com

Rev: 06.08.2023