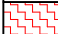

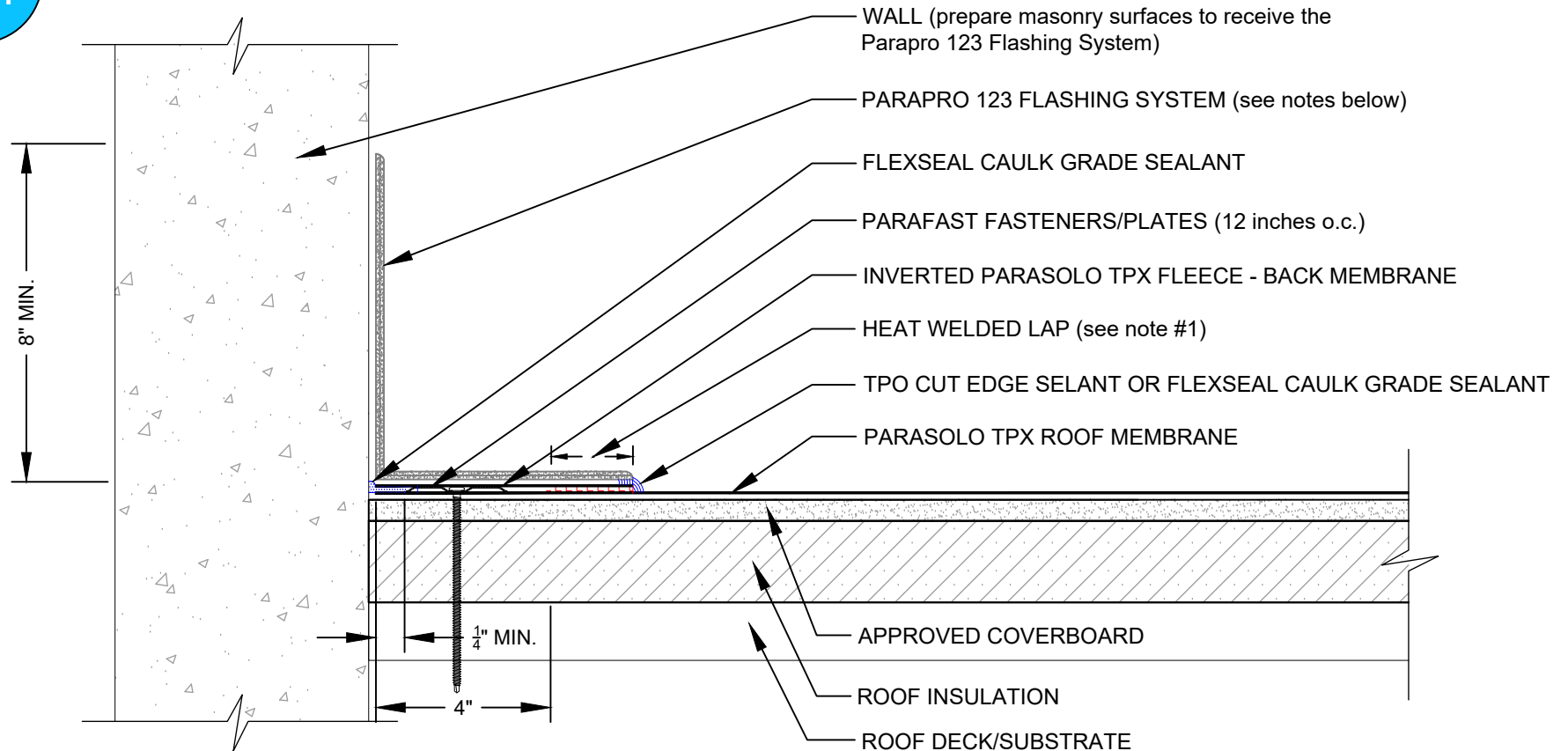


# WALL WITH SELF TERMINATING PARAPRO 123 FLASHING

## PARASOLO TPX ROOF MEMBRANE - INSULATED (ALL SYSTEMS)

LEGEND	
	HEAT WELD
	SEALANT

TPX  
ONLY



### NOTES:

1. FOR HEAT-WELDING LAPS USE 1" MINIMUM TO 1-1/2" MAXIMUM WELD.
2. REFER TO SIPLAST PREPARATION GUIDELINES FOR PROPER SURFACE TREATMENT OF ALL SUBSTRATES PRIOR TO APPLICATION OF PARAPRO MATERIALS.
3. REFER TO SIPLAST FLEECE CUTTING RECOMMENDATIONS FOR CONFIGURATIONS, CUTTING, FOLDING, AND LAPPING TECHNIQUES.
4. REQUIREMENTS AND RECOMMENDATIONS DETAILED IN CURRENT SIPLAST SPECIFICATIONS AND THE PARAPRO 123 FLASHING INSTALLERS GUIDE SHALL APPLY IN ADDITION TO THE ABOVE DRAWING.

Scale: NTS

REF: WALL SELF-TERMINATING - PARASOLO TPX - PPRO - INSULATED

**Detail Number:**

DE-SP-36-05h



14911 Quorum Drive, Suite 600 - Dallas, Texas - 75254 (800) 922-8800

[www.siplast.com](http://www.siplast.com)

**Rev:** 07.09.2024