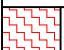
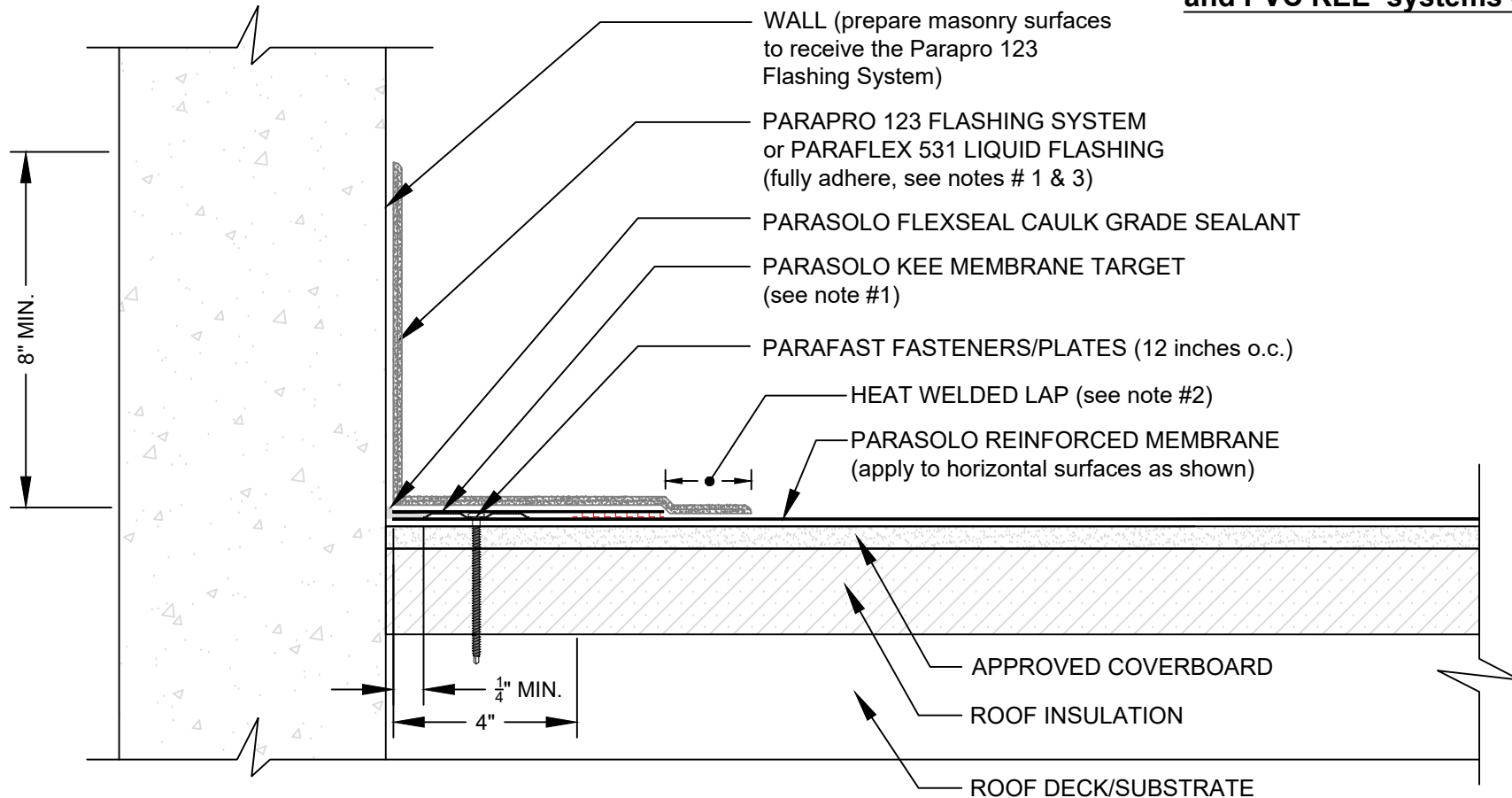


# WALL WITH SELF TERMINATING PARAPRO/PARAFLEX 531 LIQUID FLASHING

PARASOLO ROOF MEMBRANE - INSULATED (ALL SYSTEMS)

LEGEND	
	HEAT WELD

**Note: This detail applies to PVC,  
and PVC KEE systems only**



## NOTES:

1. PARASOLO KEE MEMBRANE IS REQUIRED AT LOCATIONS TO RECEIVE PARAFLEX 531 LIQUID FLASHING SYSTEMS. PARAFLEX 531 LIQUID FLASHING CAN BE UTILIZED WITH PARASOLO PVC KEE ONLY.
2. FOR HEAT-WELDING LAPS USE 1" MINIMUM WELD TO 1-1/2" MAXIMUM WELD.
3. REFER TO SIPLAST PREPARATION GUIDELINES FOR PROPER SURFACE TREATMENT OF ALL MATERIALS PRIOR TO APPLICATION OF PARAPRO OR PARAFLEX 531 LIQUID FLASHING MATERIALS.
4. REQUIREMENTS AND RECOMMENDATIONS DETAILED IN CURRENT SIPLAST SPECIFICATIONS SHALL APPLY IN ADDITION TO THE ABOVE DRAWING.

Scale: NTS

REF: WALL SELF-TERMINATING - PARASOLO - INSULATED

**Detail Number:**  
DE-SP-36-05g



14911 Quorum Drive, Suite 600 - Dallas, Texas - 75254 (800) 922-8800

[www.siplast.com](http://www.siplast.com)

**Rev:** 06.08.2023