

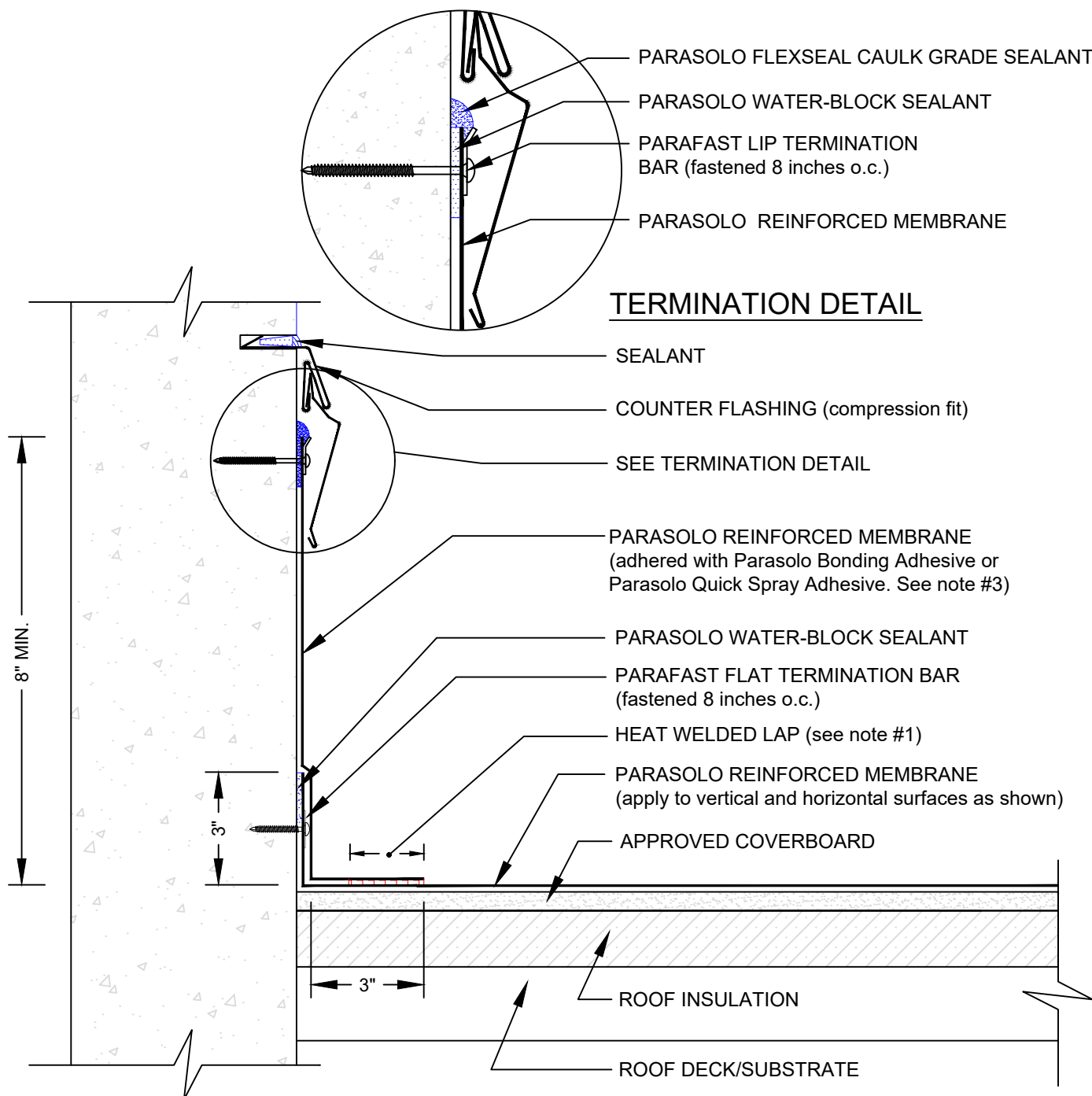


# PARAPET - WALL SUPPORTED DECK WITH PARASOLO FLASHING

## PARASOLO ROOF MEMBRANE - INSULATED (ALL SYSTEMS)

LEGEND	
	HEAT WELD
	SEALANT



### NOTES:

1. FOR HEAT-WELDING LAPS USE 1" MINIMUM WELD TO 1-1/2" MAXIMUM WELD.
2. REQUIREMENTS AND RECOMMENDATIONS DETAILED IN CURRENT SIPLAST SPECIFICATIONS SHALL APPLY IN ADDITION TO THE ABOVE DRAWING.
3. PARASOLO BONDING ADHESIVE CAN BE USED UP TO A MAXIMUM FLASHING HEIGHT OF 54 INCHES. ADDITIONAL TERMINATION IS REQUIRED FOR FLASHING HEIGHTS ABOVE 54 INCHES WHEN PARASOLO BONDING ADHESIVE IS USED. CONTACT THE SIPLAST TECHNICAL DEPARTMENT FOR ADDITIONAL INFORMATION.

Scale: NTS

REF: PARAPET - PARASOLO - INSULATED

14911 Quorum Drive, Suite 600 - Dallas, Texas - 75254

(800) 922-8800

[www.siplast.com](http://www.siplast.com)



**Detail Number:**  
DE-SP-36-05f

**Rev:** 06.08.2023