

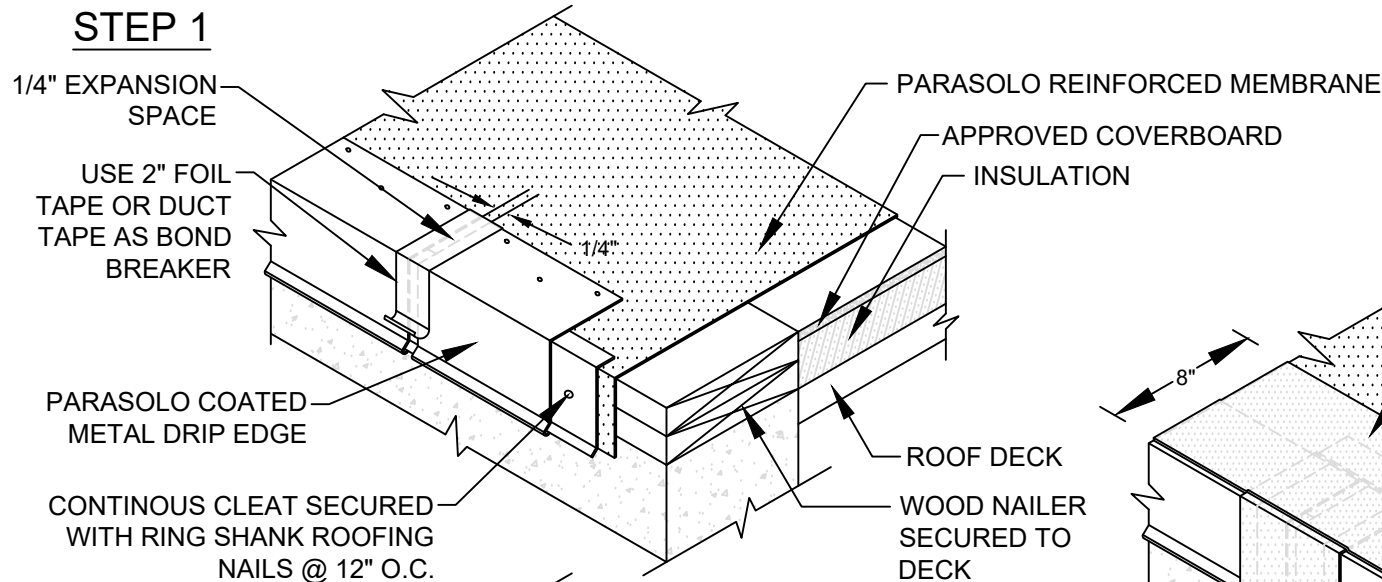
COATED METAL ROOF EDGE JOINT TREATMENT

PARASOLO ROOF MEMBRANE - INSULATED (ALL SYSTEMS)

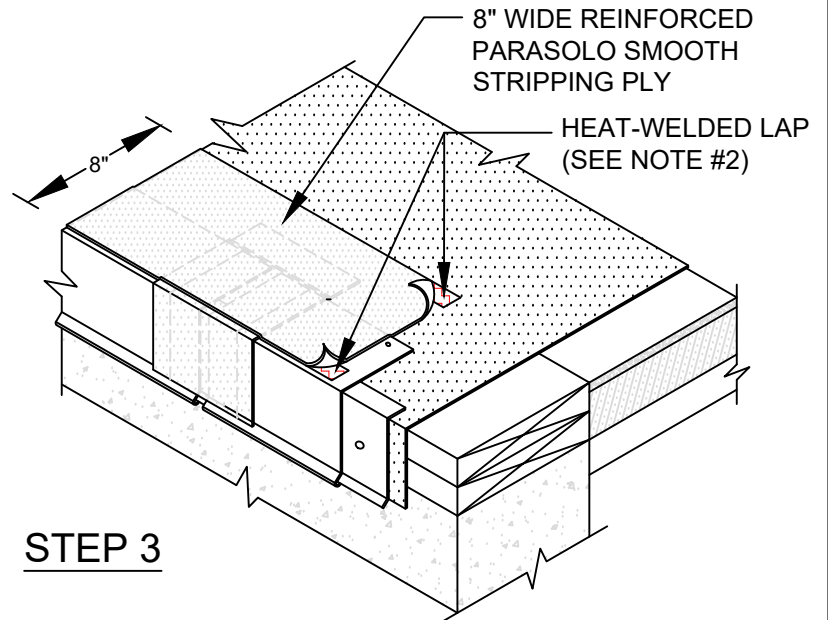
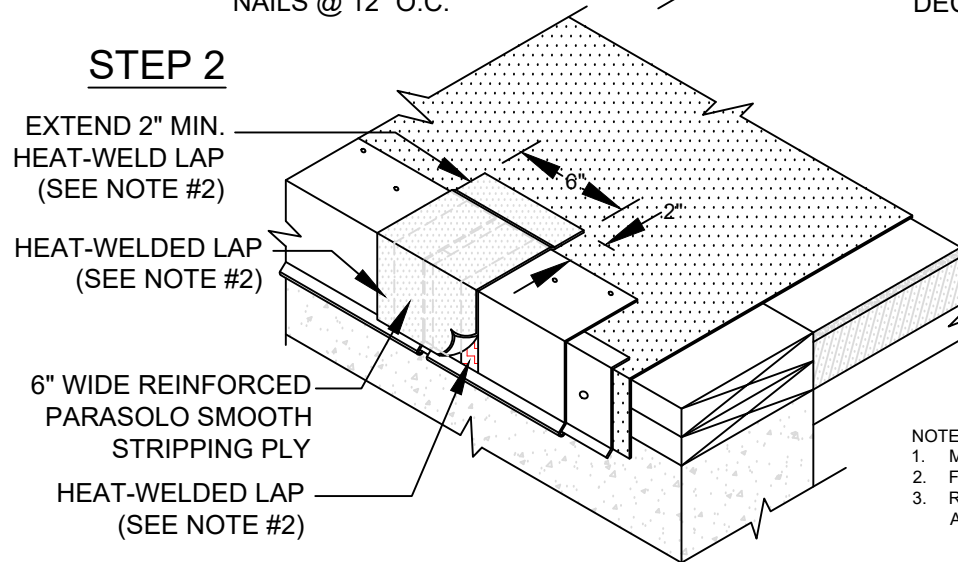
LEGEND

HEAT WELD

STEP 1



STEP 2



STEP 3

NOTES:

1. METAL EDGE AND PARASOLO STRIPPING PLY SHOULD BE INSTALLED TOGETHER IN A SAME-DAY APPLICATION.
2. FOR HEAT-WELDING LAPS USE 1" MINIMUM WELD TO 1-1/2" MAXIMUM WELD.
3. REQUIREMENTS AND RECOMMENDATIONS DETAILED IN CURRENT SIPLAST SPECIFICATIONS SHALL APPLY IN ADDITION TO THE ABOVE DRAWING.

Scale: NTS

REF: COATED METAL EDGE JOINT - PARASOLO - INSULATED

Detail Number:
DE-SP-36-04e



14911 Quorum Drive, Suite 600 - Dallas, Texas - 75254 (800) 922-8800

www.siplast.com

Rev: 06.08.2023