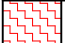
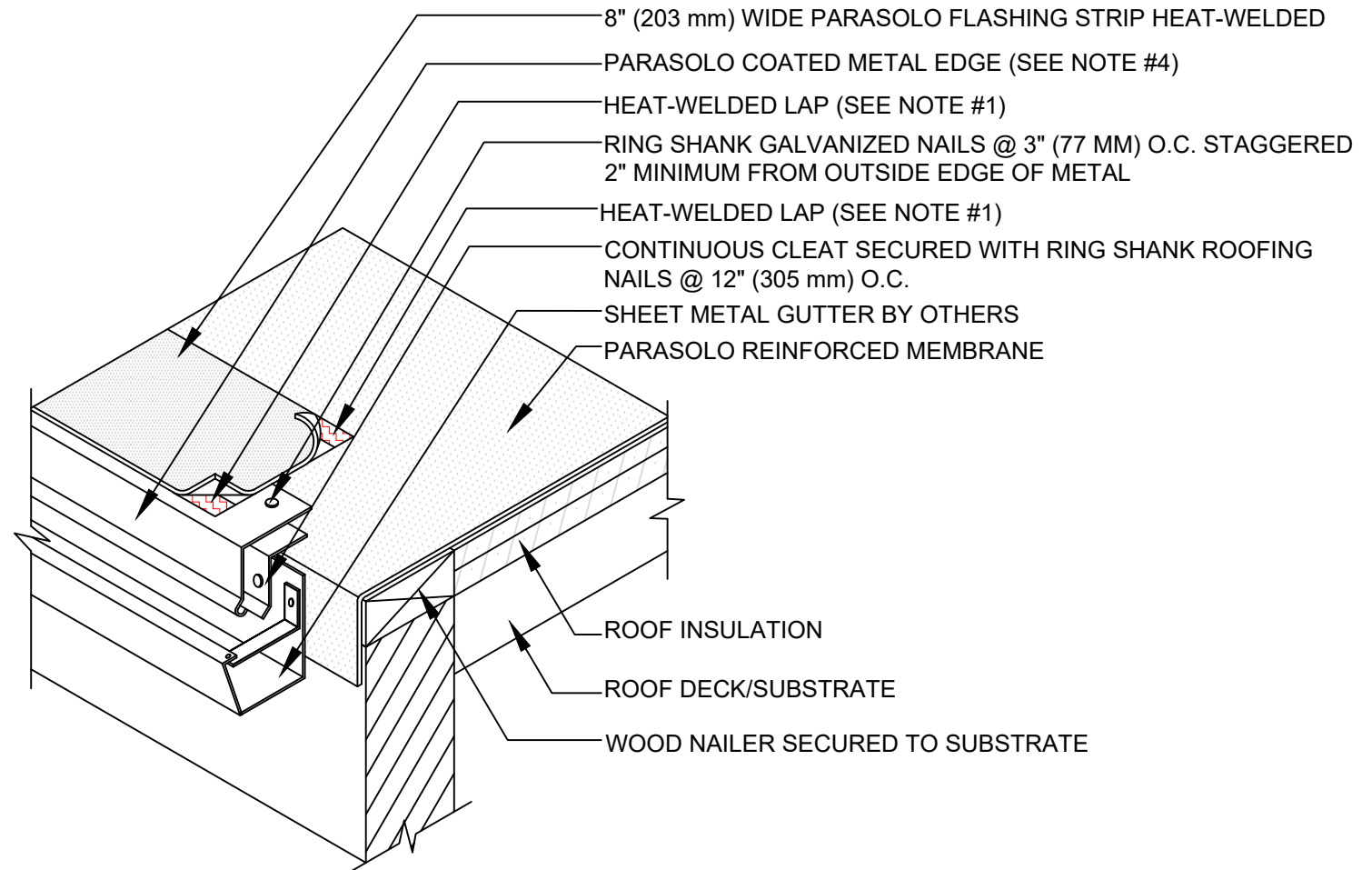


GUTTER WITH COATED METAL EDGE PARASOLO ROOF MEMBRANE - INSULATED (ALL SYSTEMS)

| LEGEND | |
|---|-----------|
|  | HEAT WELD |



NOTES:

1. FOR HEAT-WELDING LAPS USE 1" MINIMUM WELD TO 1-1/2" MAXIMUM WELD.
2. REFER TO PARASOLO ROOF EDGE FOR TREATMENT AT JOINTS.
3. CONTACT THE SIPLAST TECHNICAL DEPARTMENT FOR INFORMATION REGARDING THE APPROPRIATE PROFILES AND GAUGES FOR CLEAT AND PARASOLO METAL.

Scale: NTS

REF: GUTTER WITH COATED METAL EDGE - PARASOLO - INSULATED

Detail Number:
DE-SP-36-04d



14911 Quorum Drive, Suite 600 - Dallas, Texas - 75254 (800) 922-8800

www.siplast.com

Rev: 06.08.2023