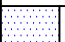
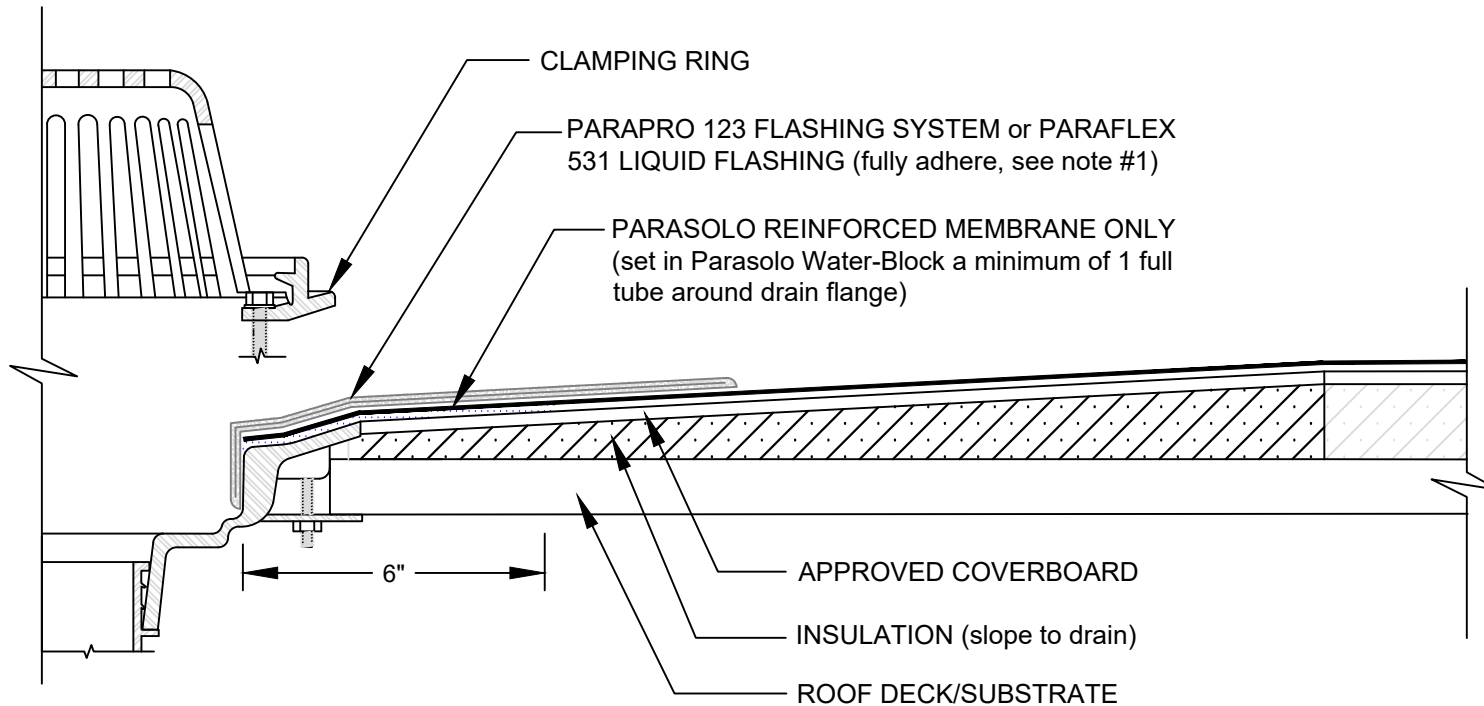


SUMPED ROOF DRAIN WITH PARAPRO/PARAFLEX 531 LIQUID FLASHING

PARASOLO ROOF MEMBRANE - INSULATED (ALL SYSTEMS)

**Note: This detail applies
to PVC and PVC KEE
systems only**

LEGEND	
	SEALANT



NOTES:

1. PARASOLO KEE MEMBRANE IS REQUIRED AT LOCATIONS TO RECEIVE PARAFLEX 531 LIQUID FLASHING. PARAFLEX 531 LIQUID FLASHING CAN BE UTILIZED WITH PARASOLO PVC KEE ONLY.
2. REFER TO SIPLAST PREPARATION GUIDELINES FOR PROPER SURFACE TREATMENT OF ALL MATERIALS PRIOR TO APPLICATION OF PARAFLEX FLASHING MATERIALS.
3. ROOF DRAIN COMPONENTS AND INSTALLATION SPECIFICATIONS ARE SUPPLIED BY THE DRAIN MANUFACTURER.
4. REQUIREMENTS AND RECOMMENDATIONS DETAILED IN CURRENT SIPLAST SPECIFICATIONS SHALL APPLY IN ADDITION TO THE ABOVE DRAWING.

Scale: NTS

REF: SUMPED DRAIN - PARASOLO - PPRO-PFLEX

Detail Number:
DE-SP-36-02c



14911 Quorum Drive, Suite 600 - Dallas, Texas - 75254 (800) 922-8800

www.siplast.com

Rev: 06.22.2023