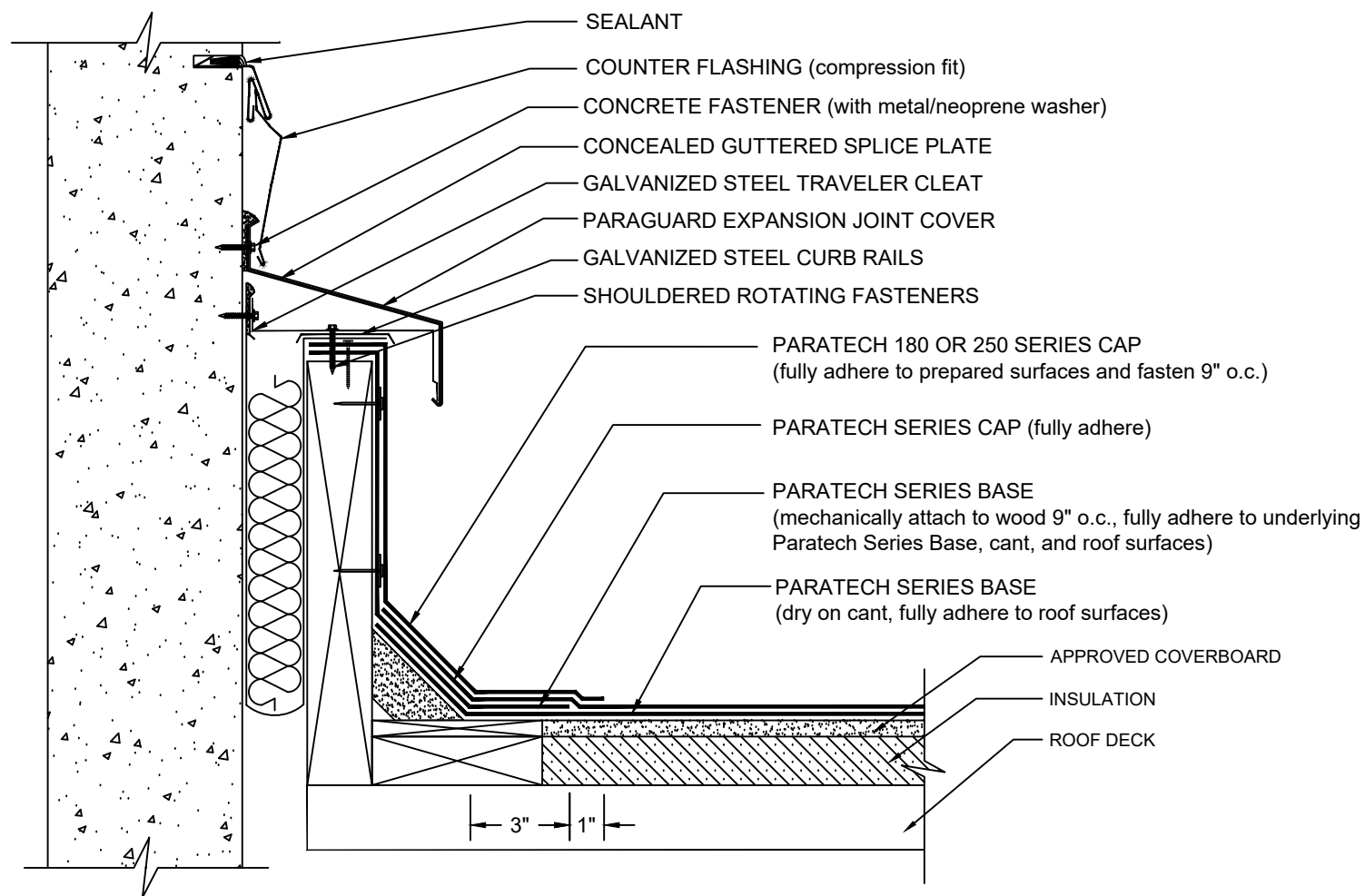


PARAGUARD EXPANSION JOINT (ROOF TO WALL)

PARATECH - INSULATED



NOTES:

1. THE CARPENTRY AND METAL WORK SHOWN DEPICTS SHOP FABRICATION AND JOB-SITE ASSEMBLY. THESE COMPONENTS SHOULD BE DESIGNED/FABRICATED/INSTALLED ACCORDING TO GENERALLY ACCEPTED INDUSTRY PRACTICES, STANDARDS, AND APPROVALS.
2. DISSIMILAR METAL TYPES SUBJECT TO ELECTROLYTIC REACTION SHOULD BE PHYSICALLY SEPARATED.
3. REFER TO THE PARAGUARD ROOF TO WALL EXPANSION JOINT PRINT APPROVAL FOR INFORMATION ON MATERIAL, SIZING AND GAUGES.
4. WHERE PRIMER IS INDICATED TO MAINTAIN PROPER ADHESION, USE PA-1125 OR PA-917 PRIMER. CONTACT SIPLAST FOR SPECIFIC REQUIREMENTS.
5. REQUIREMENTS AND RECOMMENDATIONS DETAILED IN CURRENT SIPLAST SPECIFICATIONS SHALL APPLY IN ADDITION TO THE ABOVE DRAWING.

CAUTION: SIPLAST RECOMMENDS THAT ALL PRACTICES PERTAINING TO NRCA CERTA GUIDELINES BE FOLLOWED WHEN TORCHING METHODS ARE EMPLOYED. THIS INCLUDES PERFORMING A FIRE WATCH FOLLOWING ANY TORCH APPLICATIONS. ALWAYS HAVE APPROVED FIRE-EXTINGUISHING EQUIPMENT NEARBY.

N.T.S



14911 Quorum Drive, Suite 600 - Dallas, Texas - 75254 (800) 922-8800 www.siplast.com

Ref: Pguard Exp Jt Roof to Wall - Paratech - Insulated - 12.17.21

DE-SBS-14-06d