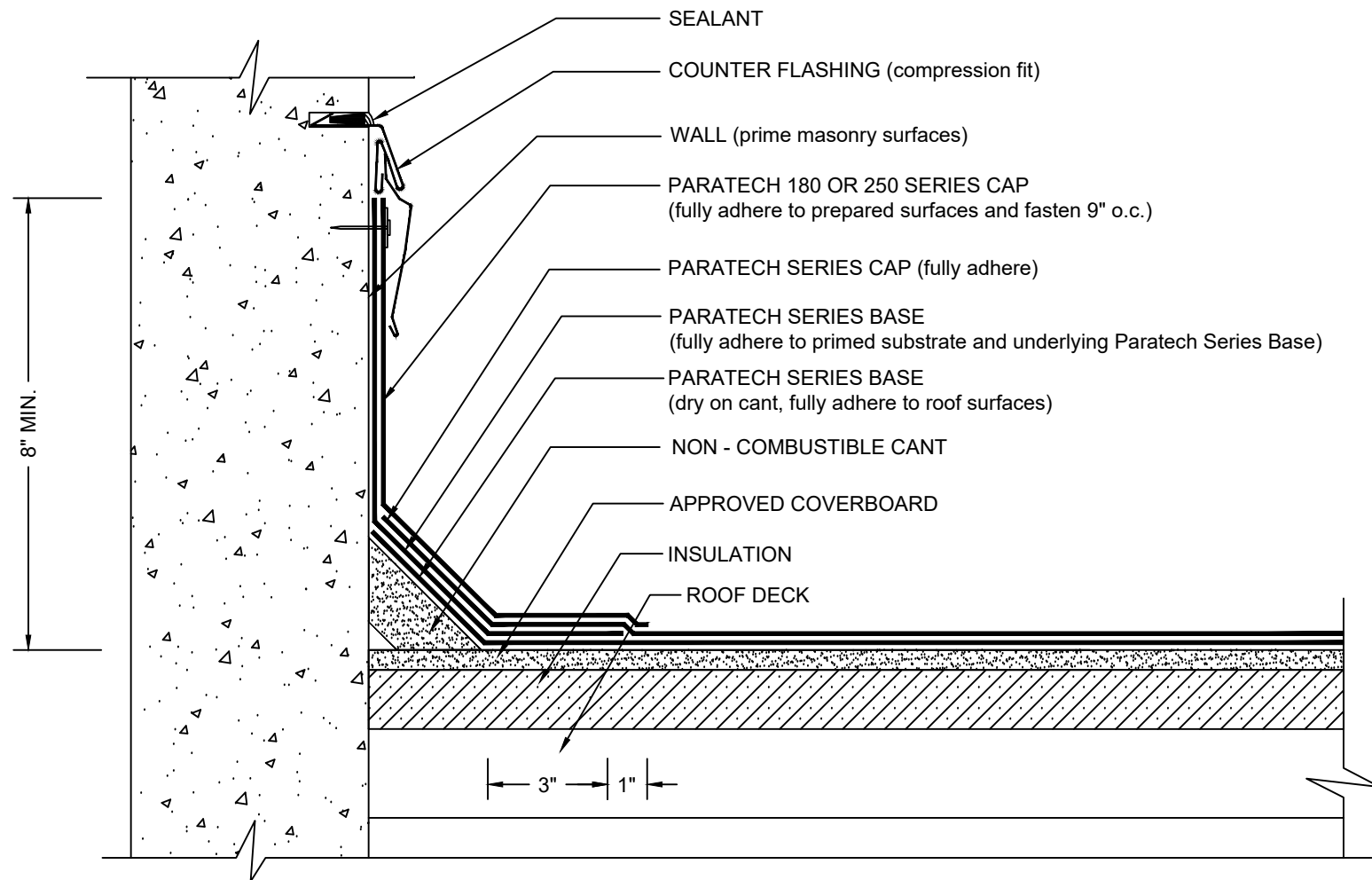


WALL FLASHING

PARATECH - INSULATED



NOTES:

1. THE CARPENTRY AND METAL WORK SHOWN DEPICTS SHOP FABRICATION AND JOB-SITE ASSEMBLY. THESE COMPONENTS SHOULD BE DESIGNED/FABRICATED/INSTALLED ACCORDING TO GENERALLY ACCEPTED INDUSTRY PRACTICES, STANDARDS, AND APPROVALS.
2. DISSIMILAR METAL TYPES SUBJECT TO ELECTROLYTIC REACTION SHOULD BE PHYSICALLY SEPARATED.
3. A NAILER AND TREATED WOOD CANT MAY BE REQUIRED FOR COMPLIANCE WITH SPECIFIC BUILDING CODES OR APPROVALS.
4. WHERE PRIMER IS INDICATED TO MAINTAIN PROPER ADHESION, USE PA-1125 OR PA-917 PRIMER. CONTACT SIPLAST FOR SPECIFIC REQUIREMENTS.
5. REQUIREMENTS AND RECOMMENDATIONS DETAILED IN CURRENT SIPLAST SPECIFICATIONS SHALL APPLY IN ADDITION TO THE ABOVE DRAWING.

CAUTION: SIPLAST RECOMMENDS THAT ALL PRACTICES PERTAINING TO NRCA CERTA GUIDELINES BE FOLLOWED WHEN TORCHING METHODS ARE EMPLOYED. THIS INCLUDES PERFORMING A FIRE WATCH FOLLOWING ANY TORCH APPLICATIONS. ALWAYS HAVE APPROVED FIRE-EXTINGUISHING EQUIPMENT NEARBY.

N.T.S



14911 Quorum Drive, Suite 600 - Dallas, Texas - 75254 (800) 922-8800 www.siplast.com

Ref: Wall Flashing - Paratech - Insulated - 12.16.21

DE-SBS-14-05f