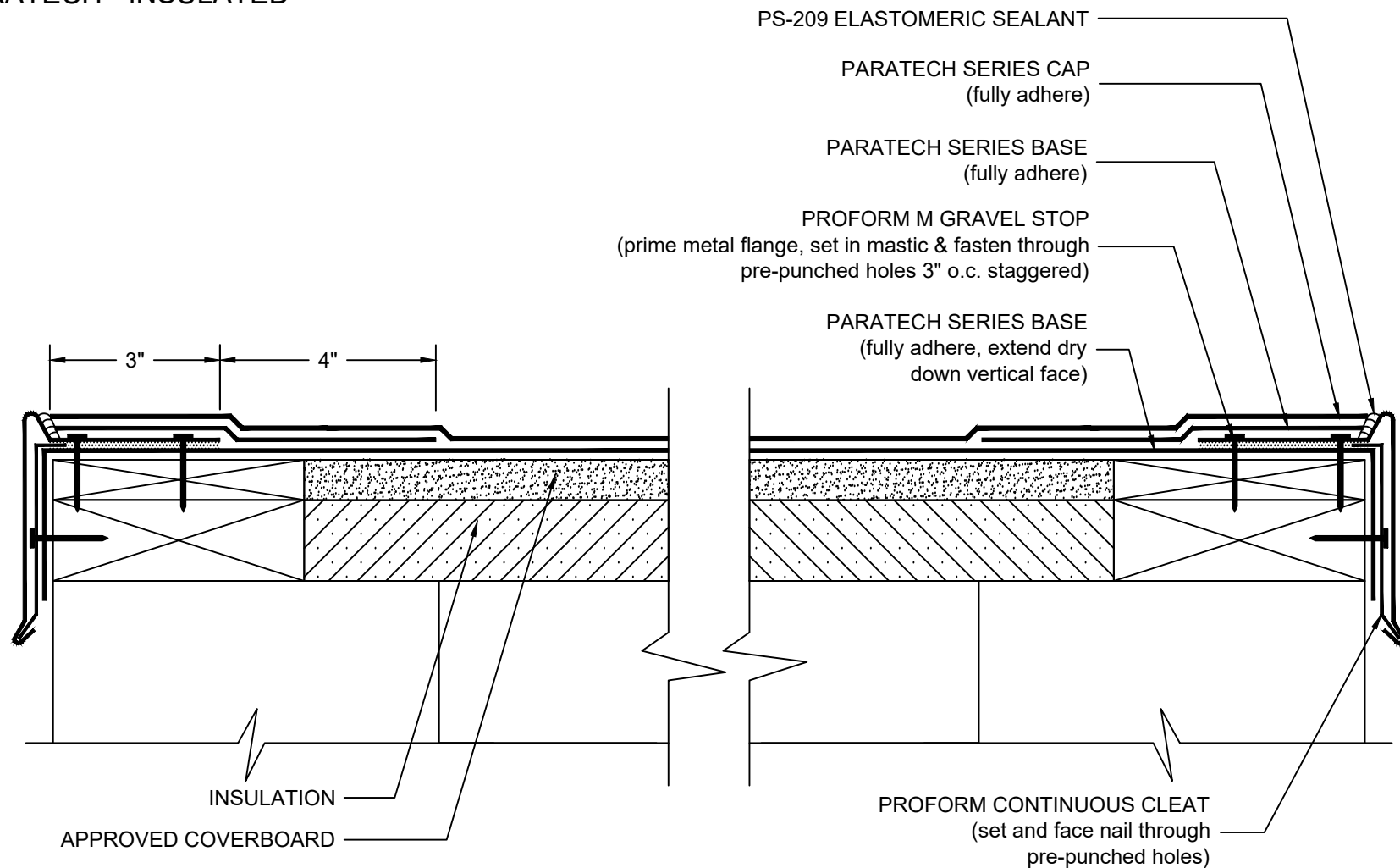


ROOF EDGE/PROFORM M GRAVEL STOP PARATECH - INSULATED



NOTES:

1. REFER TO THE PARAGUARD PROFORM M GRAVEL STOP PRINT APPROVAL AND INSTALLATION INSTRUCTIONS FOR INFORMATION ON PRODUCTS, SIZING, AND INSTALLATION OF THE PARAGUARD SYSTEM.
2. WHERE PRIMER IS INDICATED TO MAINTAIN PROPER ADHESION, USE PA-1125 OR PA-917 PRIMER. CONTACT SIPLAST FOR SPECIFIC REQUIREMENTS.
3. PREPARE GRANULE SURFACES UNDER FLASHING BY TORCH PREPARATION.
4. THE CARPENTRY SHOWN DEPICTS JOB-SITE ASSEMBLY AND SHOULD BE CONSTRUCTED ACCORDING TO GENERALLY ACCEPTED PRACTICES, STANDARDS, AND APPROVALS.
6. PA-1021 PLASTIC CEMENT, PA-828 FLASHING CEMENT, SFT CEMENT, OR PS-715 NS ELASTOMERIC SEALANT IS REQUIRED WHERE MASTIC IS INDICATED.
7. REQUIREMENTS AND RECOMMENDATIONS DETAILED IN CURRENT SIPLAST SPECIFICATIONS SHALL APPLY IN ADDITION TO THE ABOVE DRAWING.

CAUTION: SIPLAST RECOMMENDS THAT ALL PRACTICES PERTAINING TO NRCA CERTA GUIDELINES BE FOLLOWED WHEN TORCHING METHODS ARE EMPLOYED. THIS INCLUDES PERFORMING A FIRE WATCH FOLLOWING ANY TORCH APPLICATIONS. ALWAYS HAVE APPROVED FIRE-EXTINGUISHING EQUIPMENT NEARBY.

N.T.S



14911 Quorum Drive, Suite 600 - Dallas, Texas - 75254 (800) 922-8800 www.siplast.com

Ref: Pform M Gravel Stop - Paratech - Insulated - 12.16.21

DE-SBS-14-04a