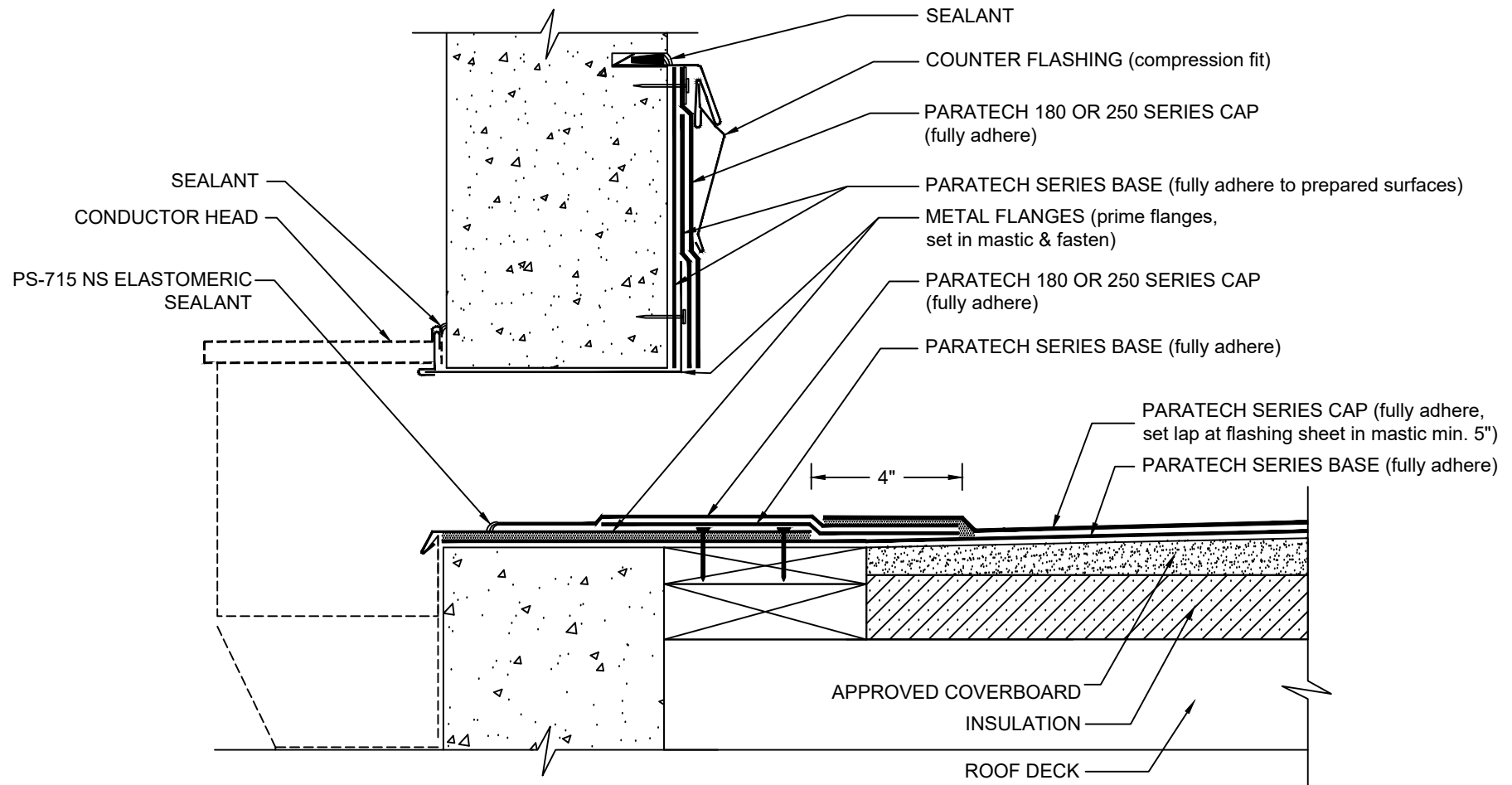


# SCUPPER PARATECH - INSULATED



## NOTES:

1. THE CARPENTRY AND METAL WORK SHOWN DEPICTS SHOP FABRICATION AND JOB-SITE ASSEMBLY. THESE COMPONENTS SHOULD BE DESIGNED/FABRICATED/INSTALLED ACCORDING TO GENERALLY ACCEPTED INDUSTRY PRACTICES, STANDARDS, AND APPROVALS.
2. DISSIMILAR METAL TYPES SUBJECT TO ELECTROLYTIC REACTION SHOULD BE PHYSICALLY SEPARATED.
3. TAPER INSULATION AREAS AROUND THE SCUPPER OPENING TO ENSURE POSITIVE DRAINAGE.
4. WHERE PRIMER IS INDICATED TO MAINTAIN PROPER ADHESION, USE PA-1125 OR PA-917 PRIMER. CONTACT SIPLAST FOR SPECIFIC REQUIREMENTS.
5. PA-1021 PLASTIC CEMENT, PA-828 FLASHING CEMENT, SFT CEMENT, OR PS-715 NS ELASTOMERIC SEALANT IS REQUIRED WHERE MASTIC IS INDICATED.
6. REQUIREMENTS AND RECOMMENDATIONS DETAILED IN CURRENT SIPLAST SPECIFICATIONS SHALL APPLY IN ADDITION TO THE ABOVE DRAWING.

CAUTION: SIPLAST RECOMMENDS THAT ALL PRACTICES PERTAINING TO NRCA CERTA GUIDELINES BE FOLLOWED WHEN TORCHING METHODS ARE EMPLOYED. THIS INCLUDES PERFORMING A FIRE WATCH FOLLOWING ANY TORCH APPLICATIONS. ALWAYS HAVE APPROVED FIRE-EXTINGUISHING EQUIPMENT NEARBY.

N.T.S



14911 Quorum Drive, Suite 600 - Dallas, Texas - 75254 (800) 922-8800 [www.siplast.com](http://www.siplast.com)

Ref: Scupper - Paratech - Insulated - 12.15.21

DE-SBS-14-02h