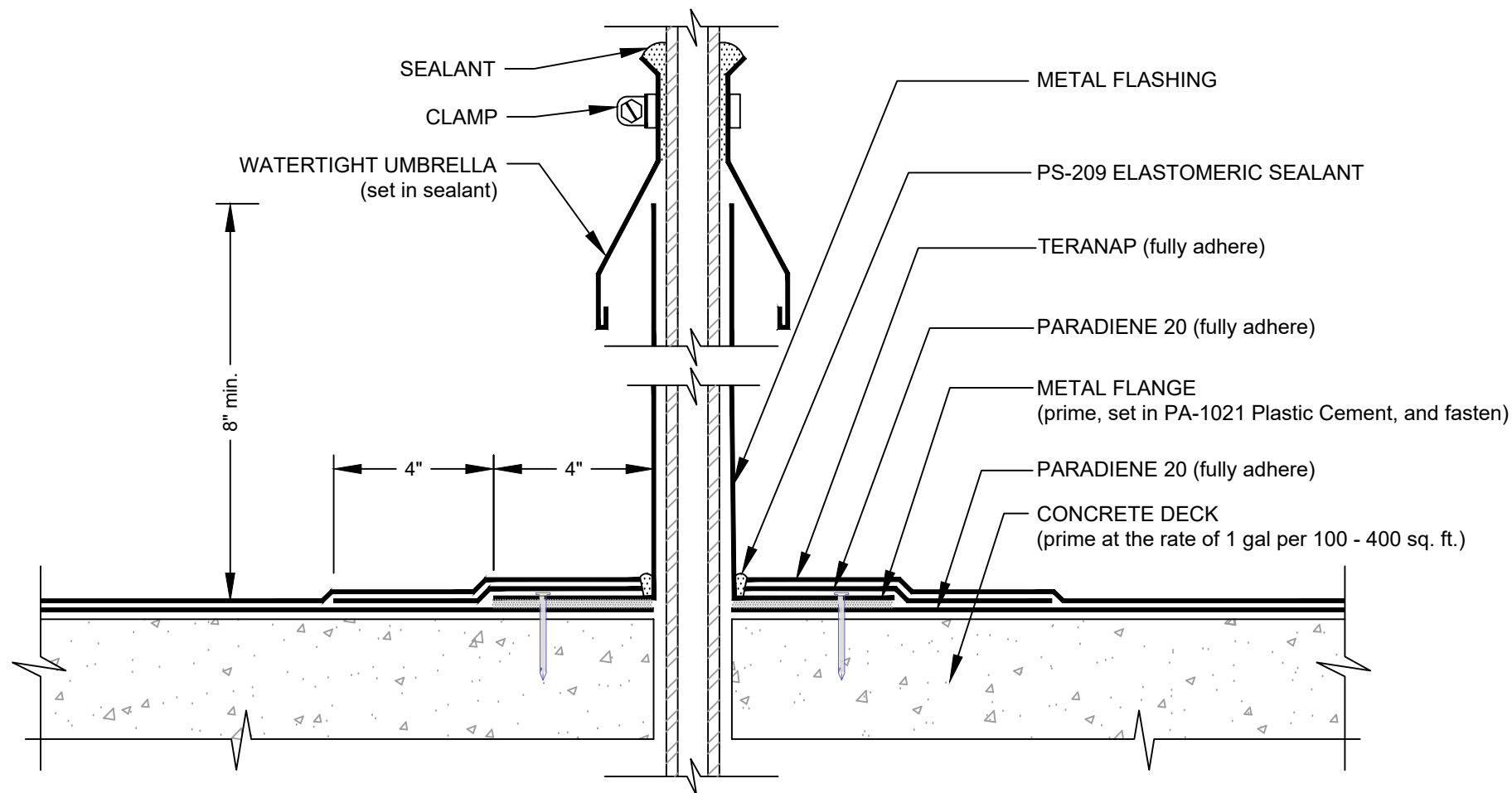


SMALL PIPE PENETRATION

TERANAP - CONCRETE SUBSTRATE - SHOWN WITHOUT OVERBURDEN COMPONENTS



NOTES:

1. WHERE FLASHING REINFORCING IS INDICATED PA-1125 OR PA-917 LS PRIMER ARE REQUIRED TO MAINTAIN PROPER ADHESION. CONTACT SIPLAST FOR SPECIFIC REQUIREMENTS.
2. CONSULT TERANAP SPECIFICATION PLATES FOR OVERBURDEN/PROTECTION SYSTEM OPTIONS.
3. REQUIREMENTS AND RECOMMENDATIONS DETAILED IN CURRENT SIPLAST SPECIFICATIONS SHALL APPLY IN ADDITION TO THE ABOVE DRAWING.

CAUTION: SIPLAST RECOMMENDS THAT ALL PRACTICES PERTAINING TO INDUSTRY STANDARD TORCH SAFETY REQUIREMENTS AND GUIDELINES BE FOLLOWED. THIS INCLUDES PERFORMING A FIRE WATCH FOLLOWING ANY TORCH APPLICATIONS. ALWAYS HAVE APPROVED FIRE EXTINGUISHING EQUIPMENT NEARBY WHEN USING A TORCH.

Scale: NTS

REF: SMALL PIPE PENETRATION - TERANAP - CONCRETE

Detail Number:
DE-SBS-08-03c



14911 Quorum Drive, Suite 600 - Dallas, Texas - 75254 (800) 922-8800

www.siplast.com

Rev: 09.18.2023