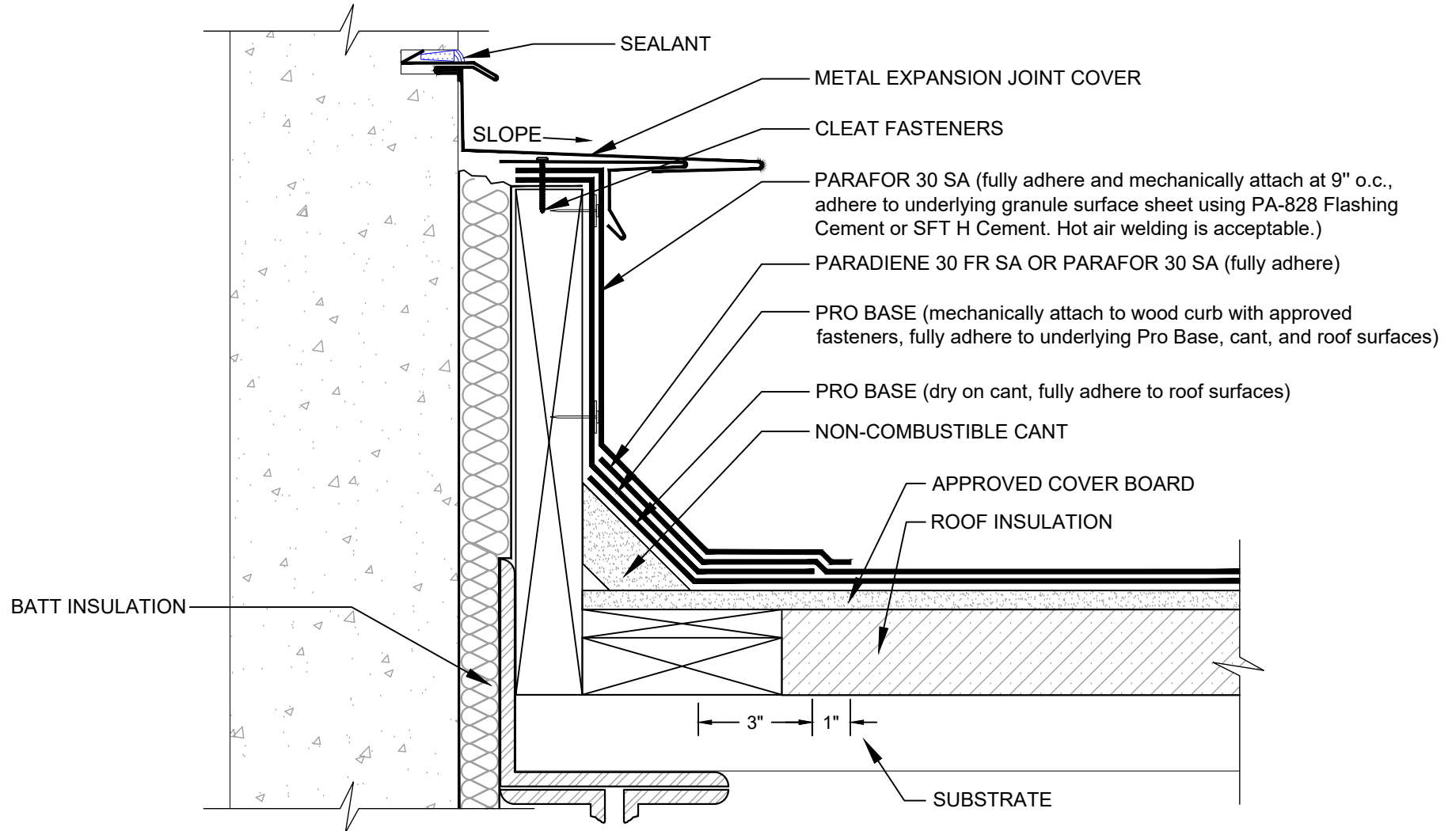


# EXPANSION JOINT (ROOF TO WALL) SBS SELF-ADHESIVE SYSTEM - INSULATED

LEGEND

SEALANT



## NOTES:

1. REQUIREMENTS AND RECOMMENDATIONS DETAILED IN CURRENT SIPLAST SPECIFICATIONS SHALL APPLY IN ADDITION TO THE ABOVE DRAWING.

CAUTION: SIPLAST RECOMMENDS THAT ALL PRACTICES PERTAINING TO INDUSTRY STANDARD TORCH SAFETY REQUIREMENTS AND GUIDELINES BE FOLLOWED. THIS INCLUDES PERFORMING A FIRE WATCH FOLLOWING ANY TORCH APPLICATIONS. ALWAYS HAVE APPROVED FIRE EXTINGUISHING EQUIPMENT NEARBY WHEN USING A TORCH.

Scale: NTS

REF: EXPANSION JOINT ROOF TO WALL - SBS SELF-ADHESIVE SYSTEM - INSULATED

**Detail Number:**  
DE-SBS-06-06b



14911 Quorum Drive, Suite 600 - Dallas, Texas - 75254 (800) 922-8800

[www.siplast.com](http://www.siplast.com)

**Rev:** 02.29.2024