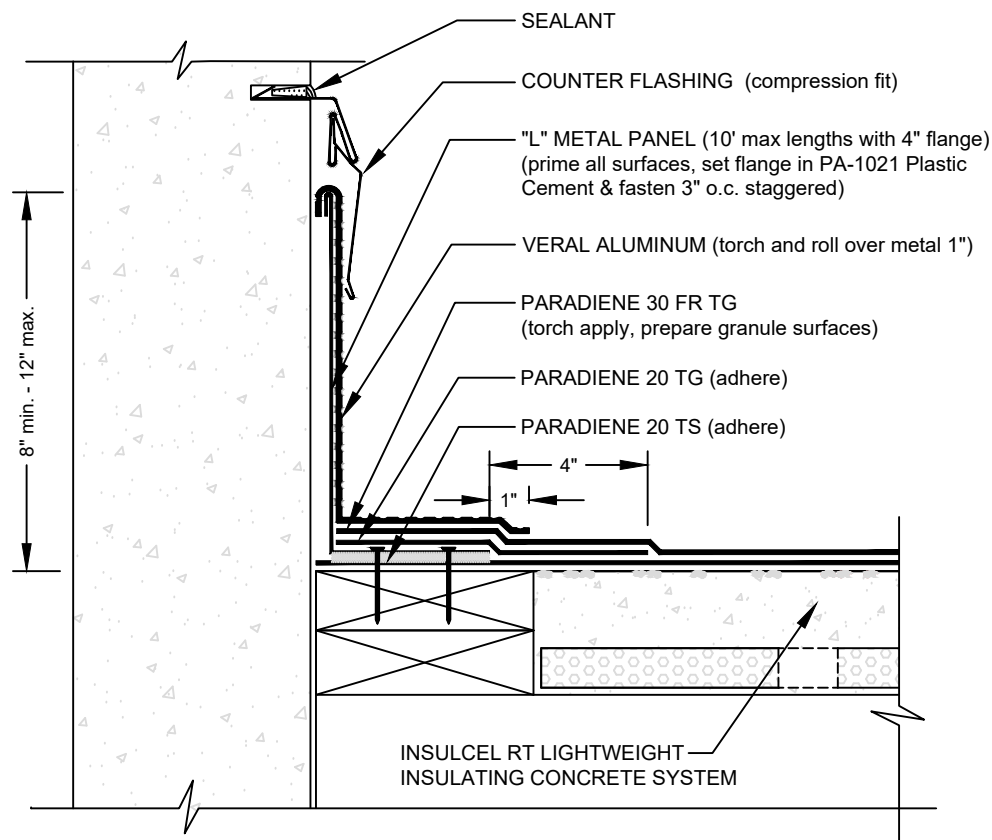
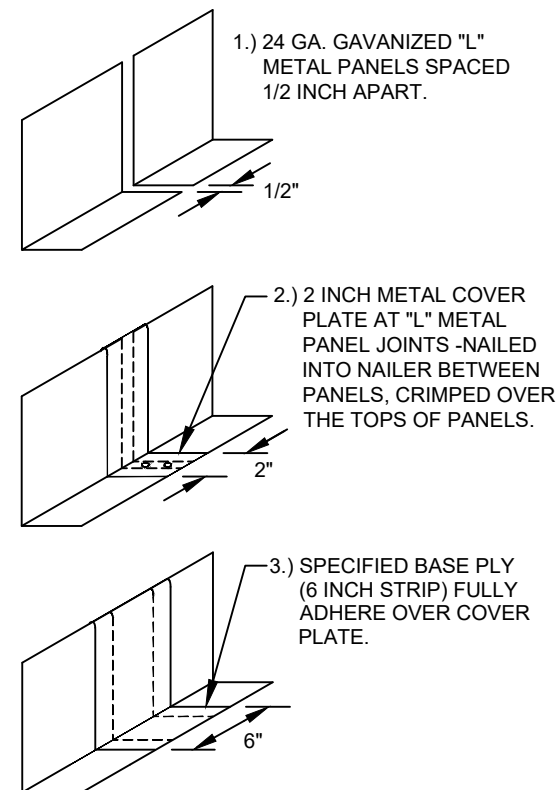


PARAPET (NON-WALL SUPPORTED DECK)

PARADIENE 20TS/30 FR TG - INSULCEL RT



L-METAL INSTALLATION JOINT TREATMENT



NOTES:

1. WHERE PRIMER IS INDICATED TO MAINTAIN PROPER ADHESION, TA-119 PRIMER IS REQUIRED FOR ALL PARADIENE 20 SA FLASHING REINFORCING AND STRIPPING PLY APPLICATIONS. USE PA-1125 OR PA-917 LS FOR ALL NON-PARADIENE 20 SA APPLICATIONS. CONTACT SIPLAST FOR SPECIFIC REQUIREMENTS.
2. PREPARE GRANULE SURFACES UNDER VERAL FLASHING BY TORCH PREPARATION.
3. THE CARPENTRY SHOWN DEPICT SHOP FABRICATION AND JOB-SITE ASSEMBLY. THESE COMPONENTS SHOULD BE INSTALLED ACCORDING TO GENERALLY ACCEPTED INDUSTRY PRACTICES, STANDARDS, AND APPROVALS.
4. REQUIREMENTS AND RECOMMENDATIONS DETAILED IN SIPLAST SPECIFICATIONS SHALL APPLY IN ADDITION TO THE ABOVE DRAWING.

CAUTION: SIPLAST RECOMMENDS THAT ALL PRACTICES PERTAINING TO INDUSTRY STANDARD TORCH SAFETY REQUIREMENTS AND GUIDELINES BE FOLLOWED. THIS INCLUDES PERFORMING A FIRE WATCH FOLLOWING ANY TORCH APPLICATIONS. ALWAYS HAVE APPROVED FIRE EXTINGUISHING EQUIPMENT NEARBY WHEN USING A TORCH.

Scale: NTS

REF: PARAPET (NON SUPPORTED DECK) - 20TS30 - INSULCEL RT

Detail Number:
DE-SBS-02-05b



14911 Quorum Drive, Suite 600 - Dallas, Texas - 75254 (800) 922-8800

www.siplast.com

Rev: 05.30.2023