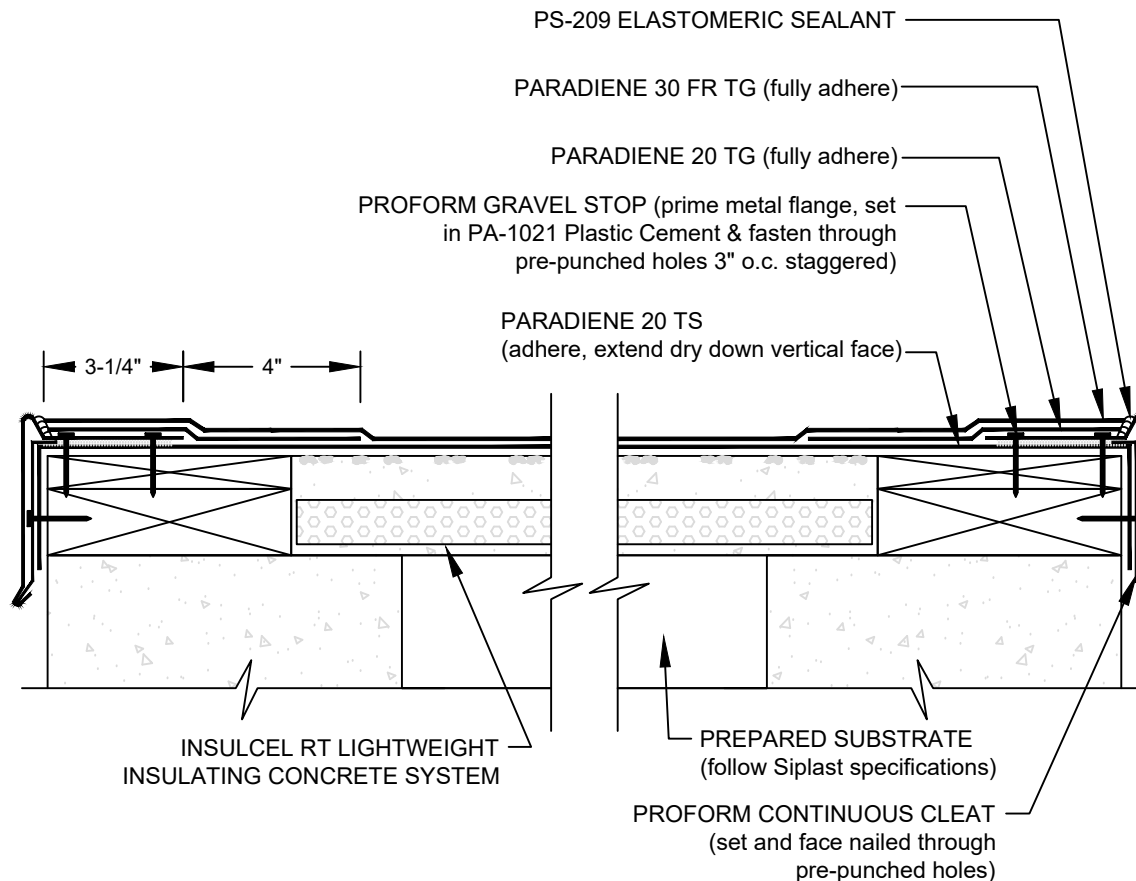


# ROOF EDGE/PROFORM GRAVEL STOP

## PARADIENE 20TS/30 FR TG - INSULCEL RT



### NOTES:

1. REFER TO THE PARAGUARD ROOF PERIMETER SYSTEMS INSTALLER'S GUIDE FOR INFORMATION ON PRODUCTS, SIZING, AND INSTALLATION OF THE PARAGUARD SYSTEM.
2. WHERE PRIMER IS INDICATED TO MAINTAIN PROPER ADHESION, TA-119 PRIMER IS REQUIRED FOR ALL PARADIENE 20 SA FLASHING REINFORCING AND STRIPPING PLY APPLICATIONS. USE PA-1125 OR PA-917 LS FOR ALL NON-PARADIENE 20 SA APPLICATIONS. CONTACT SIPLAST FOR SPECIFIC REQUIREMENTS.
3. PREPARE GRANULE SURFACES UNDER FLASHING BY TORCH PREPARATION.
4. THE CARPENTRY SHOWN DEPICTS JOB-SITE ASSEMBLY AND SHOULD BE CONSTRUCTED ACCORDING TO GENERALLY ACCEPTED PRACTICES, STANDARDS, AND APPROVALS.
5. REQUIREMENTS AND RECOMMENDATIONS DETAILED IN SIPLAST SPECIFICATIONS SHALL APPLY IN ADDITION TO THE ABOVE DRAWING.

CAUTION: SIPLAST RECOMMENDS THAT ALL PRACTICES PERTAINING TO NRCA CERTA GUIDELINES BE FOLLOWED WHEN TORCHING METHODS ARE EMPLOYED. THIS INCLUDES PERFORMING A FIRE WATCH FOLLOWING ANY TORCH APPLICATIONS. ALWAYS HAVE APPROVED FIRE EXTINGUISHING EQUIPMENT NEARBY.

Scale: NTS

REF: ROOF EDGE/PROFORM GRAVEL STOP - 20TS30 INSULCEL RT-PPRO

Detail Number:  
DE-SBS-02-04a



14911 Quorum Drive, Suite 600 - Dallas, Texas - 75254 (800) 922-8800

[www.siplast.com](http://www.siplast.com)

Rev: 05.30.2023