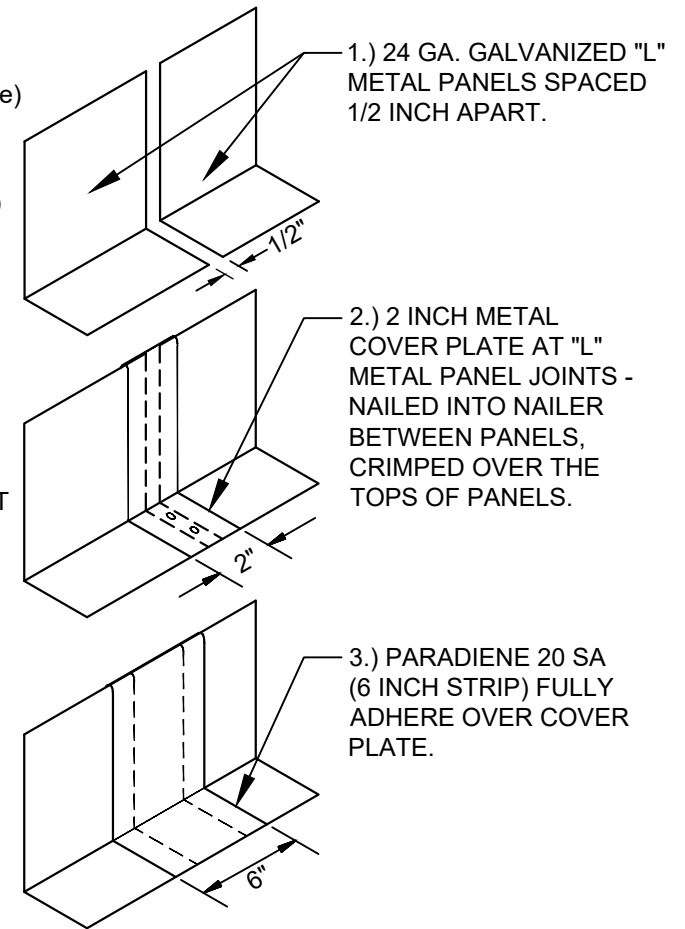
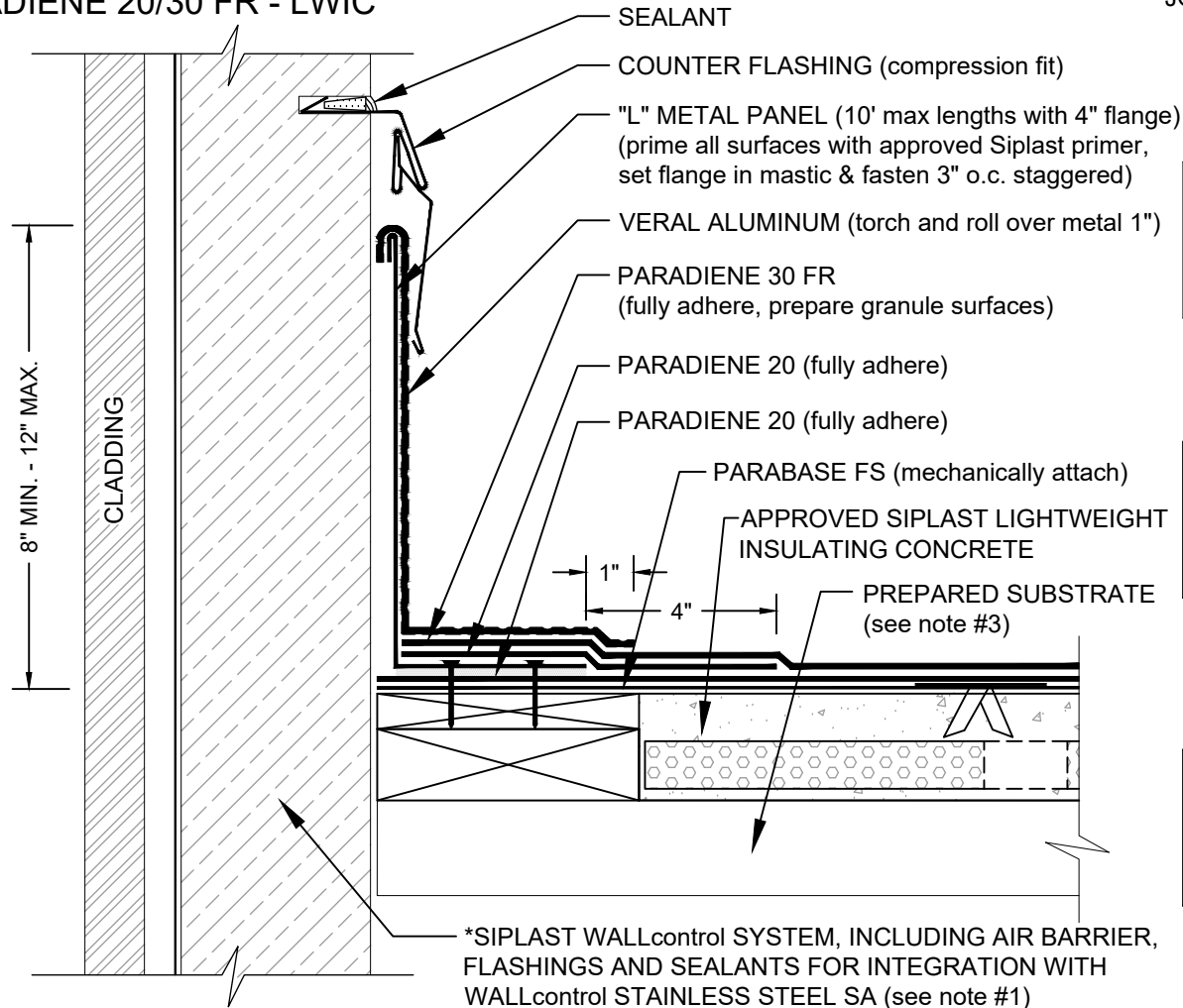


# PARAPET - NON-WALL SUPPORTED DECK PARADIENE 20/30 FR - LWIC

## L-METAL INSTALLATION JOINT TREATMENT



### NOTES:

1. THE WALL STRUCTURE AND CLADDING DEPICTED REPRESENTS ONE COMMON VARIANT OF WALL CONSTRUCTION. THE WALL CONSTRUCTION INCLUDING MATERIALS USED AS AN AIR/MOISTURE BARRIER FOR A SPECIFIC PROJECT MAY DIFFER FROM THAT DEPICTED.
2. PA-1021 PLASTIC CEMENT, PA-828 FLASHING CEMENT, SFT CEMENT, OR PS-715 NS ELASTOMERIC SEALANT ARE REQUIRED WHERE MASTIC IS INDICATED.
3. REFERENCE THE SIPLAST TECHNICAL GUIDE FOR THE APPROPRIATE SIPLAST LIGHTWEIGHT INSULATING CONCRETE SYSTEM WITH REGARD TO SPECIFIC SUBSTRATE TYPES.

CAUTION: SIPLAST RECOMMENDS THAT ALL PRACTICES PERTAINING TO INDUSTRY STANDARD TORCH SAFETY REQUIREMENTS AND GUIDELINES BE FOLLOWED. THIS INCLUDES PERFORMING A FIRE WATCH FOLLOWING ANY TORCH APPLICATIONS. ALWAYS HAVE APPROVED FIRE EXTINGUISHING EQUIPMENT NEARBY WHEN USING A TORCH.

Scale: NTS

REF: PARAPET (NONSUP) - 2030 - LWIC

**Detail Number:**  
DE-SBS-01-05b



14911 Quorum Drive, Suite 600 - Dallas, Texas - 75254 (800) 922-8800

[www.siplast.com](http://www.siplast.com)

**Rev:** 11.26.2024