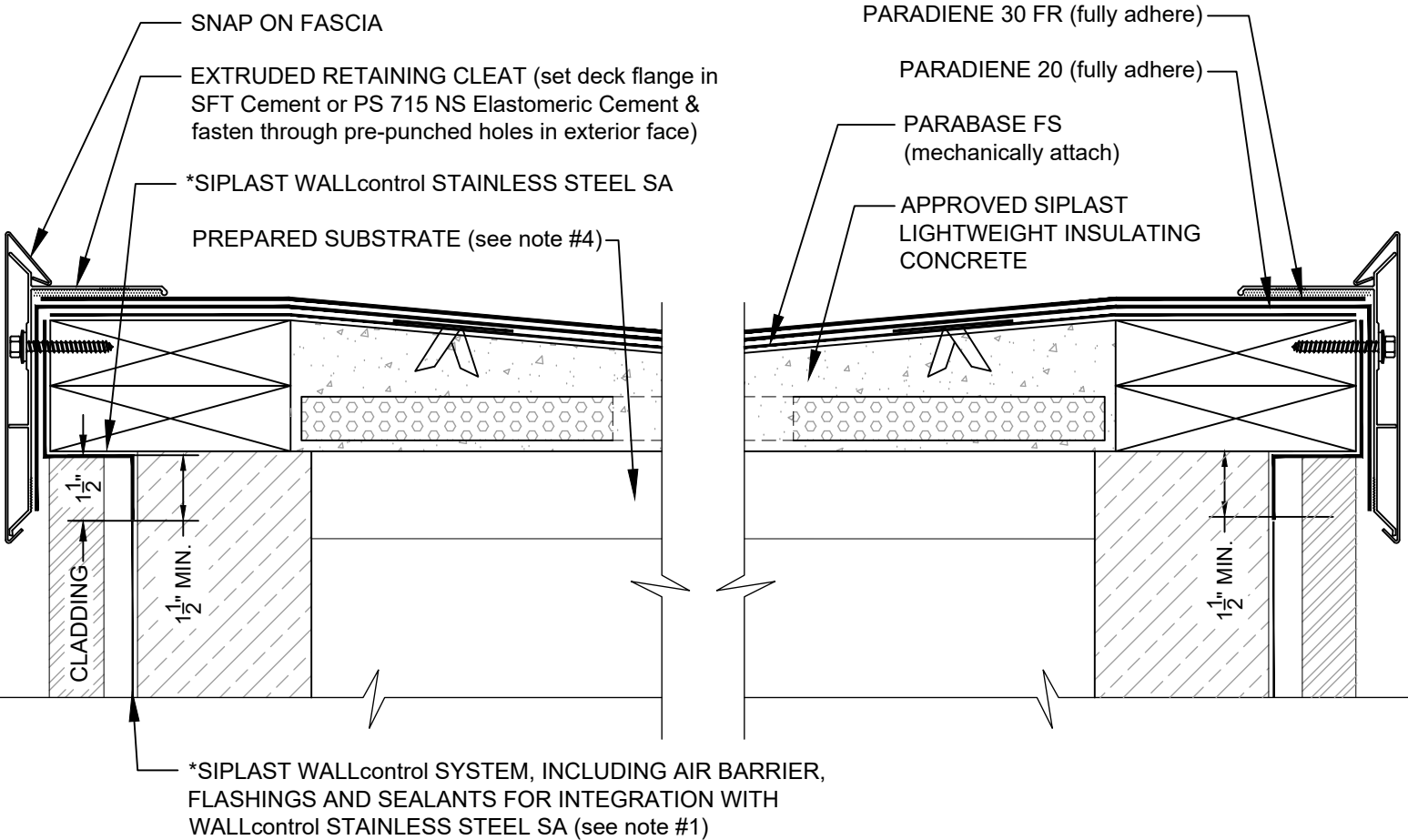


PARAGUARD EXTRUDED EDGE AT
PARADIENE 20/30 FR - LWIC



- NOTES:
- 1. THE WALL STRUCTURE AND CLADDING DEPICTED REPRESENTS ONE COMMON VARIANT OF WALL CONSTRUCTION. THE WALL CONSTRUCTION INCLUDING MATERIALS USED AS AN AIR/MOISTURE BARRIER FOR A SPECIFIC PROJECT MAY DIFFER FROM THAT DEPICTED.
 - 2. REFER TO THE PARAGUARD ROOF PERIMETER SYSTEM INSTALLER'S GUIDE FOR INFORMATION ON PRODUCTS, SIZING, AND INSTALLATION OF THE PARAGUARD SYSTEM.
 - 3. REQUIREMENTS AND RECOMMENDATIONS DETAILED IN CURRENT SIPLAST SPECIFICATIONS SHALL APPLY IN ADDITION TO THE ABOVE DRAWING.
 - 4. REFERENCE THE SIPLAST TECHNICAL GUIDE FOR THE APPROPRIATE SIPLAST LIGHTWEIGHT INSULATING CONCRETE SYSTEM WITH REGARD TO SPECIFIC SUBSTRATE TYPES.
- CAUTION: SIPLAST RECOMMENDS THAT ALL PRACTICES PERTAINING TO INDUSTRY STANDARD TORCH SAFETY REQUIREMENTS AND GUIDELINES BE FOLLOWED. THIS INCLUDES PERFORMING A FIRE WATCH FOLLOWING ANY TORCH APPLICATIONS. ALWAYS HAVE APPROVED FIRE EXTINGUISHING EQUIPMENT NEARBY WHEN USING A TORCH.

Scale: NTS

REF: PARAGUARD EXTRUDED EDGE AT - 2030 - LWIC

Detail Number:
DE-SBS-01-04b



14911 Quorum Drive, Suite 600 - Dallas, Texas - 75254 (800) 922-8800

www.siplast.com

Rev: 11.26.2024