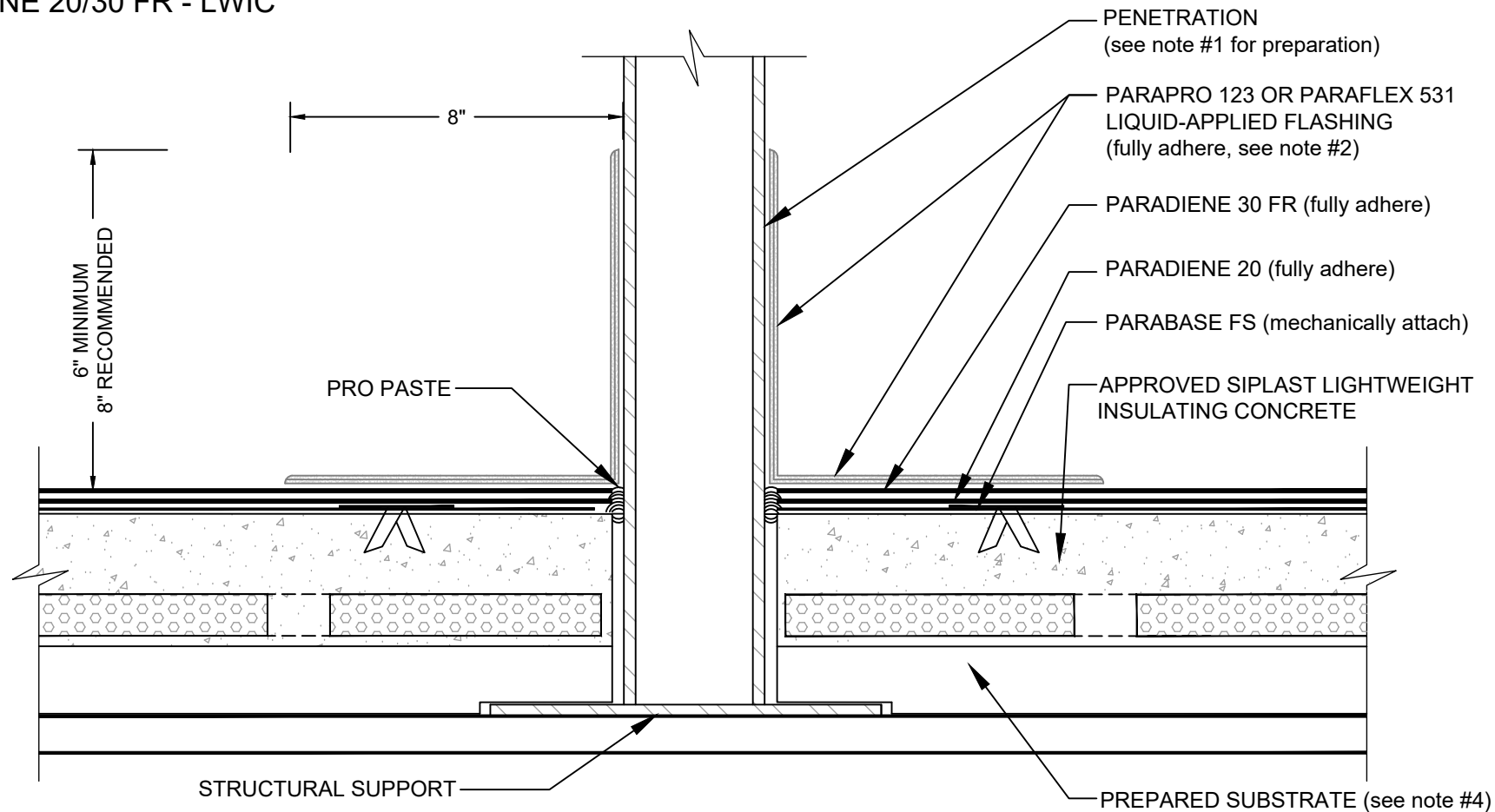


PENETRATION WITH LIQUID-APPLIED FLASHING

PARADIENE 20/30 FR - LWIC



NOTES:

1. REFER TO SIPLAST PREPARATION GUIDELINES FOR PROPER SURFACE TREATMENT OF ALL MATERIALS PRIOR TO APPLICATION OF LIQUID-APPLIED FLASHING MATERIALS.
2. LIQUID-APPLIED FLASHING CANNOT BE APPLIED IN THE ABOVE CONFIGURATION OVER MEMBRANES OR OTHER MATERIALS CONTAINING UNCURED, SOLVENT-BASED MATERIALS. IN SUCH CASES, MEMBRANES TO BE COVERED WITH LIQUID-APPLIED FLASHING MUST BE ADHERED WITH SFT ADHESIVE, SFT CEMENT, PS-209, OR PS-715 NS ELASTOMERIC SEALANT. CONTACT SIPLAST FOR ALTERNATIVE DETAILS THAT ALLOW FOR APPLICATION OVER A BASE PLY APPLIED IN SOLVENT BASED ADHESIVE.
3. REQUIREMENTS AND RECOMMENDATIONS DETAILED IN CURRENT SIPLAST SPECIFICATIONS AND THE PARAFLEX 531 LIQUID FLASHING SYSTEM INSTALLER'S GUIDE SHALL APPLY IN ADDITION TO THE ABOVE DRAWING.
4. REFERENCE THE SIPLAST TECHNICAL GUIDE FOR THE APPROPRIATE SIPLAST LIGHTWEIGHT INSULATING CONCRETE SYSTEM WITH REGARD TO SPECIFIC SUBSTRATE TYPES.

CAUTION: SIPLAST RECOMMENDS THAT ALL PRACTICES PERTAINING TO INDUSTRY STANDARD TORCH SAFETY REQUIREMENTS AND GUIDELINES BE FOLLOWED. THIS INCLUDES PERFORMING A FIRE WATCH FOLLOWING ANY TORCH APPLICATIONS. ALWAYS HAVE APPROVED FIRE EXTINGUISHING EQUIPMENT NEARBY WHEN USING A TORCH.

Scale: NTS

REF: PENETRATION - 2030 - INSULATED - LWIC

Detail Number:
DE-SBS-01-03e



14911 Quorum Drive, Suite 600 - Dallas, Texas - 75254 (800) 922-8800

www.siplast.com

Rev: 11.25.2024