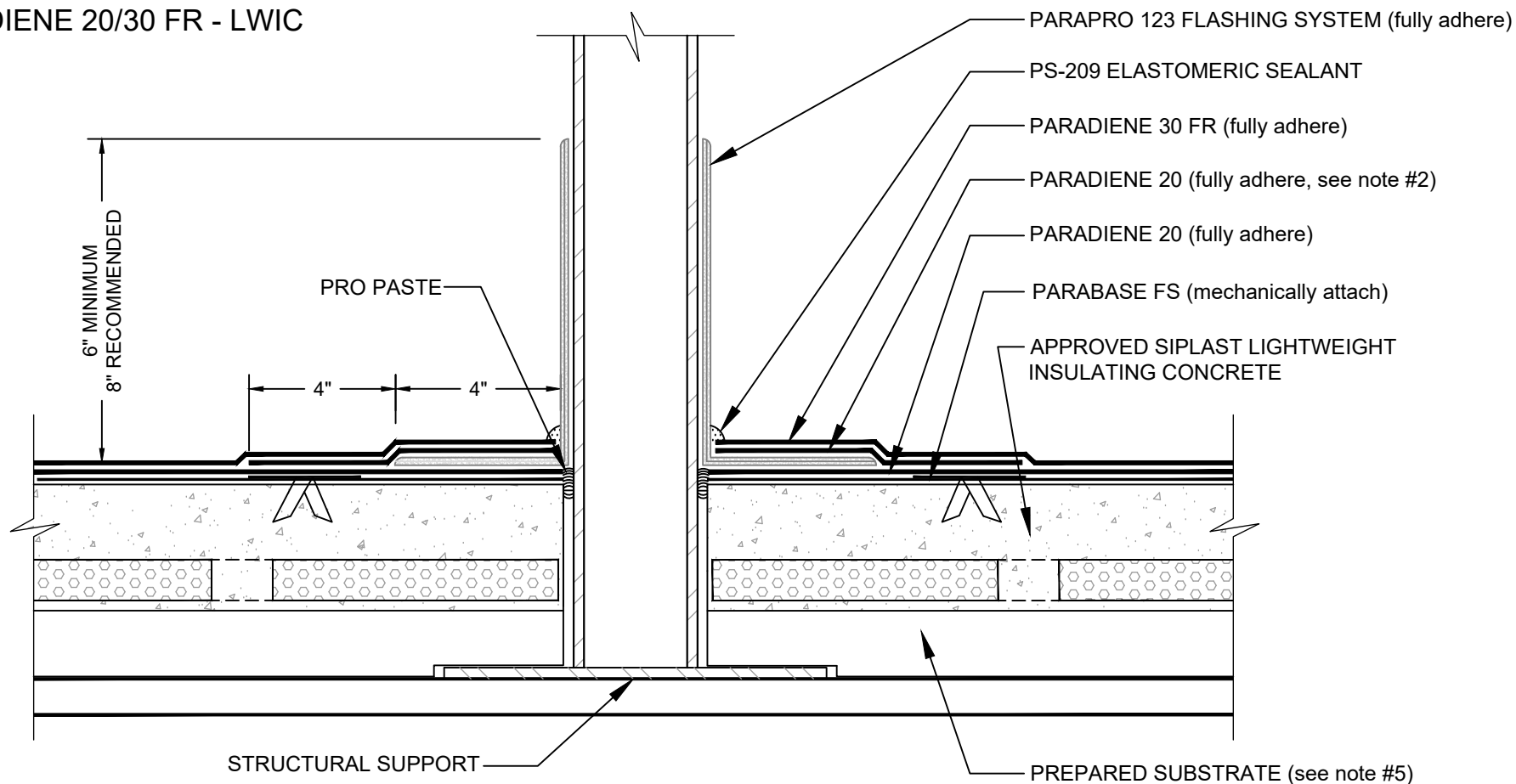


# PENETRATION WITH INTER-PLY PARAPRO FLASHING

PARADIENE 20/30 FR - LWIC



## NOTES:

1. CLEAN/WIPE THE SURFACE OF THE CURED PARAPRO 123 FLASHING WITH PRO PREP AND ALLOW TO DRY PRIOR TO APPLICATION OF THE PARADIENE 20 STRIPPING PLY.
2. THE STRIPPING PLY SHOWN IN THE ABOVE SCHEMATIC AND IS CONSIDERED OPTIONAL IN ROOF CONSTRUCTIONS UTILIZING A SELF ADHESIVE BASE PLY OR A BASE PLY ADHERED WITH HOT ASPHALT OR BY TORCH.
3. REFER TO SIPLAST PREPARATION GUIDELINES FOR PROPER SURFACE TREATMENT OF ALL MATERIALS PRIOR TO APPLICATION OF PARAPRO FLASHING MATERIALS.
3. REFER TO SIPLAST FLEECE CUTTING RECOMMENDATIONS FOR CONFIGURATIONS, CUTTING, FOLDING AND LAPPING TECHNIQUES.
4. REQUIREMENTS AND RECOMMENDATIONS DETAILED IN CURRENT SIPLAST SPECIFICATIONS AND THE PARAPRO 123 FLASHING SYSTEM INSTALLER'S GUIDE SHALL APPLY IN ADDITION TO THE ABOVE DRAWING.
5. REFERENCE THE SIPLAST TECHNICAL GUIDE FOR THE APPROPRIATE SIPLAST LIGHTWEIGHT INSULATING CONCRETE SYSTEM WITH REGARD TO SPECIFIC SUBSTRATE TYPES.

CAUTION: SIPLAST RECOMMENDS THAT ALL PRACTICES PERTAINING TO INDUSTRY STANDARD TORCH SAFETY REQUIREMENTS AND GUIDELINES BE FOLLOWED. THIS INCLUDES PERFORMING A FIRE WATCH FOLLOWING ANY TORCH APPLICATIONS. ALWAYS HAVE APPROVED FIRE EXTINGUISHING EQUIPMENT NEARBY WHEN USING A TORCH.

Scale: NTS

REF: PENETRATION (INTER-PLY) - 2030 - INSULATED - LWIC

**Detail Number:**  
DE-SBS-01-03d



14911 Quorum Drive, Suite 600 - Dallas, Texas - 75254 (800) 922-8800

[www.siplast.com](http://www.siplast.com)

**Rev:** 11.25.2024