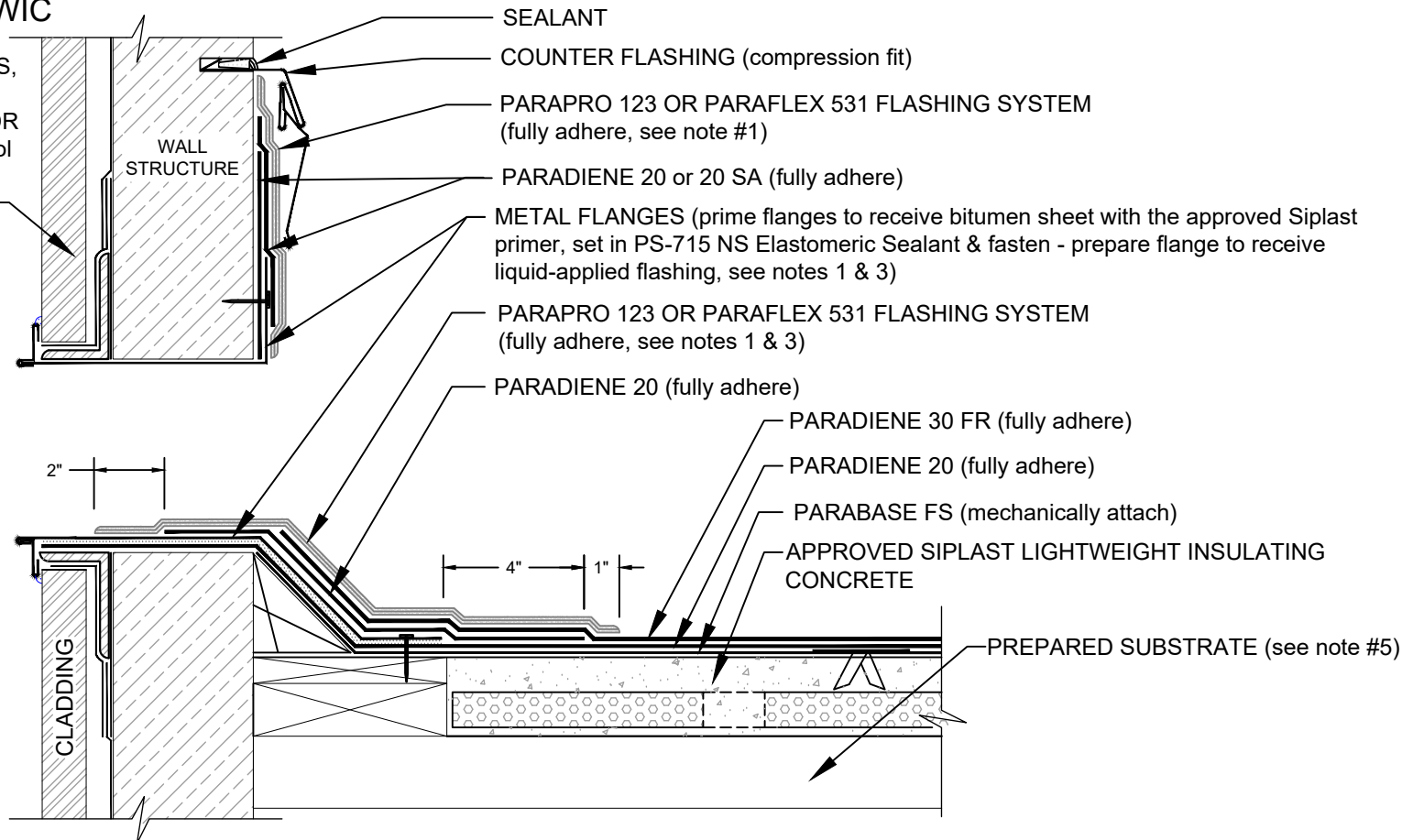


OVERFLOW SCUPPER WITH LIQUID-APPLIED FLASHING

PARADIENE 20/30 FR - LWIC

*SIPLAST WALLcontrol SYSTEMS, INCLUDING AIR BARRIER, FLASHINGS AND SEALANTS FOR INTEGRATION WITH WALLcontrol STAINLESS STEEL BUTYL-ADHERED FLASHING (see note #2)



NOTES:

1. REFER TO SIPLAST PREPARATION GUIDELINES FOR PROPER SURFACE TREATMENT OF ALL MATERIALS PRIOR TO APPLICATION OF LIQUID FLASHING MATERIALS.
2. THE WALL STRUCTURE AND CLADDING DEPICTED REPRESENTS ONE COMMON VARIANT OF WALL CONSTRUCTION. THE WALL CONSTRUCTION INCLUDING MATERIALS USED AS AN AIR/MOISTURE BARRIER FOR A SPECIFIC PROJECT MAY DIFFER FROM THAT DEPICTED.
3. LIQUID-APPLIED FLASHING CANNOT BE APPLIED IN THE ABOVE CONFIGURATION OVER MEMBRANES OR OTHER MATERIALS CONTAINING UNCURED, SOLVENT-BASED MATERIALS. IN SUCH CASES, MEMBRANES TO BE COVERED WITH LIQUID-APPLIED FLASHING MUST BE ADHERED WITH SFT ADHESIVE, PS-209, or PS-715 NS ELASTOMERIC SEALANT. CONTACT SIPLAST FOR FURTHER INFORMATION, CONTACT SIPLAST FOR TREATMENT OPTIONS OF CONDITIONS UTILIZING A BASE PLY APPLIED IN SOLVENT BASED ADHESIVE.
4. REQUIREMENTS AND RECOMMENDATIONS DETAILED IN CURRENT SIPLAST SPECIFICATIONS AND THE PARAPRO 123 OR PARAFLEX 531 FLASHING SYSTEM INSTALLER'S GUIDE SHALL APPLY IN ADDITION TO THE ABOVE DRAWING. CONTACT SIPLAST FOR TREATMENT OPTIONS OF CONDITIONS UTILIZING A BASE PLY APPLIED IN SOLVENT BASED ADHESIVE.
5. REFERENCE THE SIPLAST TECHNICAL GUIDE FOR THE APPROPRIATE SIPLAST LIGHTWEIGHT INSULATING CONCRETE SYSTEM WITH REGARD TO SPECIFIC SUBSTRATE TYPES.

CAUTION: SIPLAST RECOMMENDS THAT ALL PRACTICES PERTAINING TO INDUSTRY STANDARD TORCH SAFETY REQUIREMENTS AND GUIDELINES BE FOLLOWED. THIS INCLUDES PERFORMING A FIRE WATCH FOLLOWING ANY TORCH APPLICATIONS. ALWAYS HAVE APPROVED FIRE EXTINGUISHING EQUIPMENT NEARBY WHEN USING A TORCH.

Scale: NTS

REF: OVERFLOW SCUPPER WITH LIQUID APPLIED FLASHING - 2030 - LWIC

Detail Number:
DE-SBS-01-02m



14911 Quorum Drive, Suite 600 - Dallas, Texas - 75254 (800) 922-8800

www.siplast.com

Rev: 11.25.2024