

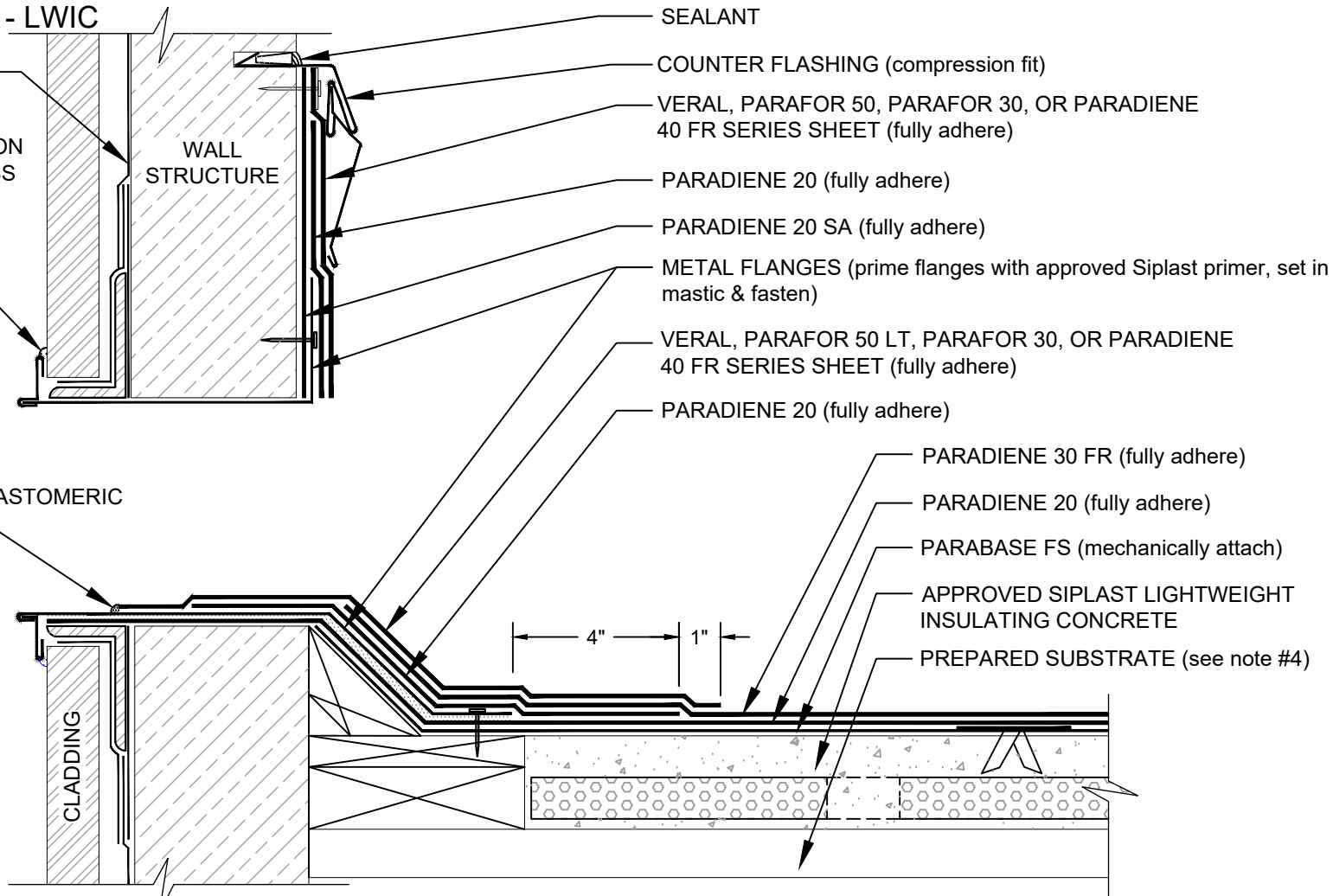
OVERFLOW SCUPPER

PARADIENE 20/30 FR - LWIC

*SIPLAST WALLcontrol SYSTEMS, INCLUDING AIR BARRIER, FLASHINGS AND SEALANTS FOR INTEGRATION WITH WALLcontrol STAINLESS STEEL BUTYL-ADHERED FLASHING (see note #1)

SEALANT

PS-715 NS ELASTOMERIC SEALANT



NOTES:

1. THE WALL STRUCTURE AND CLADDING DEPICTED REPRESENTS ONE COMMON VARIANT OF WALL CONSTRUCTION. THE WALL CONSTRUCTION INCLUDING MATERIALS USED AS AN AIR/MOISTURE BARRIER FOR A SPECIFIC PROJECT MAY DIFFER FROM THAT DEPICTED.
 2. PA-1021 PLASTIC CEMENT, PA-828 FLASHING CEMENT, SFT CEMENT, OR PS-715 NS ELASTOMERIC SEALANT IS REQUIRED WHERE MASTIC IS INDICATED.
 3. REQUIREMENTS AND RECOMMENDATIONS DETAILED IN CURRENT SIPLAST SPECIFICATIONS SHALL APPLY IN ADDITION TO THE ABOVE DRAWING.
 4. REFERENCE THE SIPLAST TECHNICAL GUIDE FOR THE APPROPRIATE SIPLAST LIGHTWEIGHT INSULATING CONCRETE SYSTEM WITH REGARD TO SPECIFIC SUBSTRATE TYPES.
- CAUTION: SIPLAST RECOMMENDS THAT ALL PRACTICES PERTAINING TO INDUSTRY STANDARD TORCH SAFETY REQUIREMENTS AND GUIDELINES BE FOLLOWED. THIS INCLUDES PERFORMING A FIRE WATCH FOLLOWING ANY TORCH APPLICATIONS. ALWAYS HAVE APPROVED FIRE EXTINGUISHING EQUIPMENT NEARBY WHEN USING A TORCH.

Scale: NTS

REF: OVERFLOW SCUPPER - 2030 - LWIC



14911 Quorum Drive, Suite 600 - Dallas, Texas - 75254 (800) 922-8800

www.siplast.com

Detail Number:
DE-SBS-01-02i

Rev: 11.21.2024