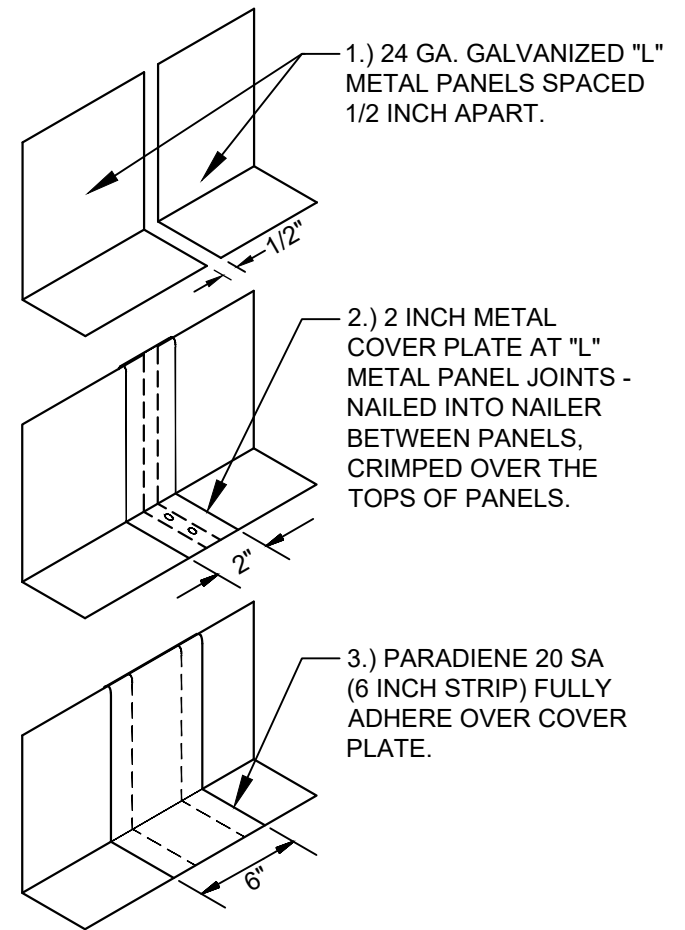
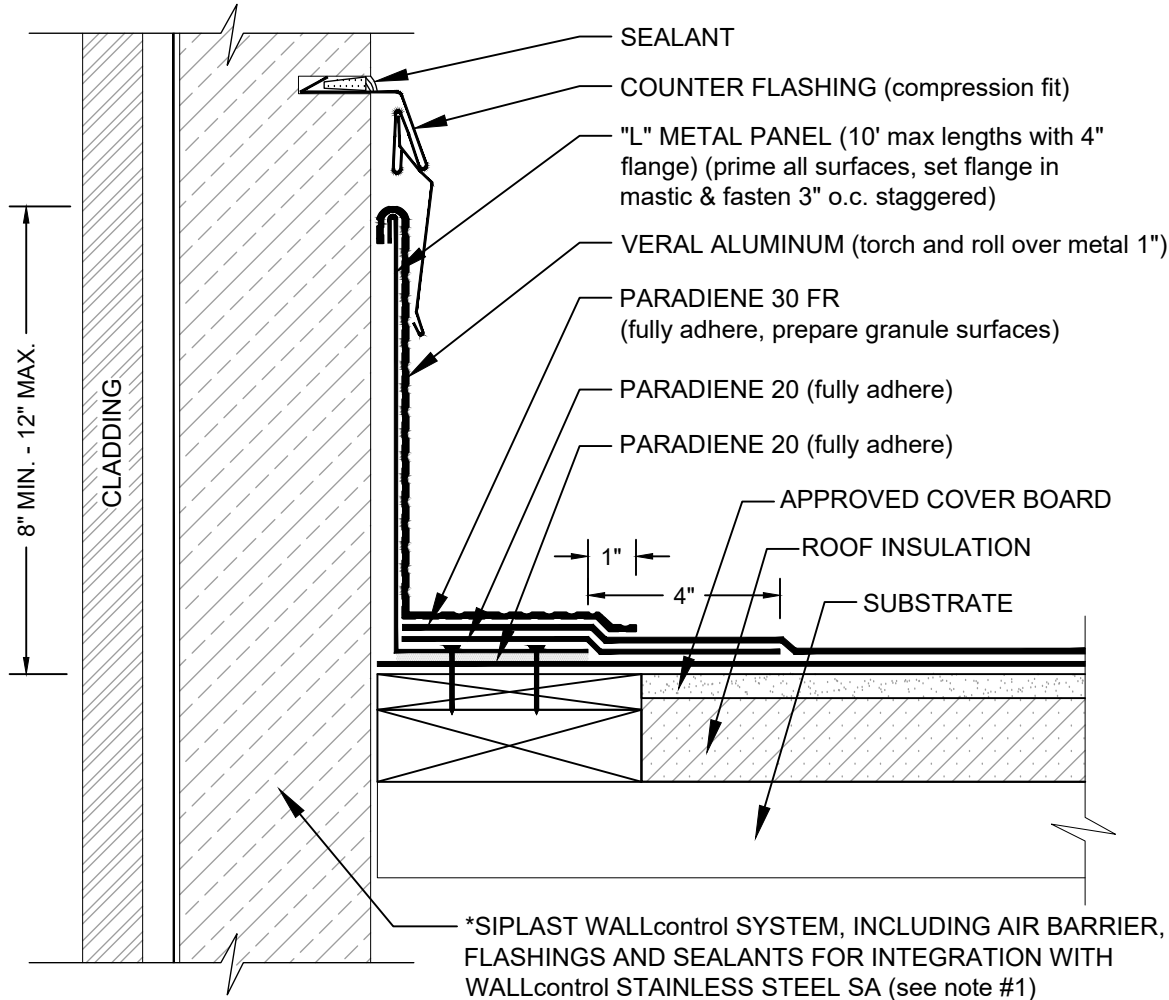


PARAPET - NON-WALL SUPPORTED DECK PARADIENE 20/30 FR - INSULATED

L-METAL INSTALLATION JOINT TREATMENT



NOTES:

1. THE WALL STRUCTURE AND CLADDING DEPICTED REPRESENTS ONE COMMON VARIANT OF WALL CONSTRUCTION. THE WALL CONSTRUCTION INCLUDING MATERIALS USED AS AN AIR/MOISTURE BARRIER FOR A SPECIFIC PROJECT MAY DIFFER FROM THAT DEPICTED.
2. PA-1021 PLASTIC CEMENT, PA-828 FLASHING CEMENT, SFT CEMENT, OR PS-715 NS ELASTOMERIC SEALANT ARE REQUIRED WHERE MASTIC IS INDICATED.
3. REQUIREMENTS AND RECOMMENDATIONS DETAILED IN CURRENT SIPLAST SPECIFICATIONS SHALL APPLY IN ADDITION TO THE ABOVE DRAWING.

CAUTION: SIPLAST RECOMMENDS THAT ALL PRACTICES PERTAINING TO INDUSTRY STANDARD TORCH SAFETY REQUIREMENTS AND GUIDELINES BE FOLLOWED. THIS INCLUDES PERFORMING A FIRE WATCH FOLLOWING ANY TORCH APPLICATIONS. ALWAYS HAVE APPROVED FIRE EXTINGUISHING EQUIPMENT NEARBY WHEN USING A TORCH.

Scale: NTS

REF: PARAPET (NONSUP) - 2030 - INSULATED



14911 Quorum Drive, Suite 600 - Dallas, Texas - 75254 (800) 922-8800

www.siplast.com

Detail Number:
DE-SBS-00-05b

Rev: 11.26.2024