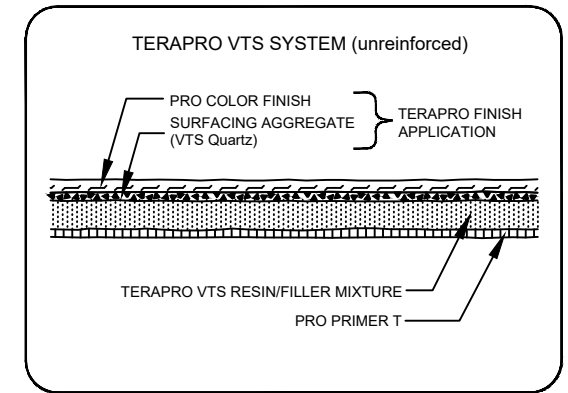
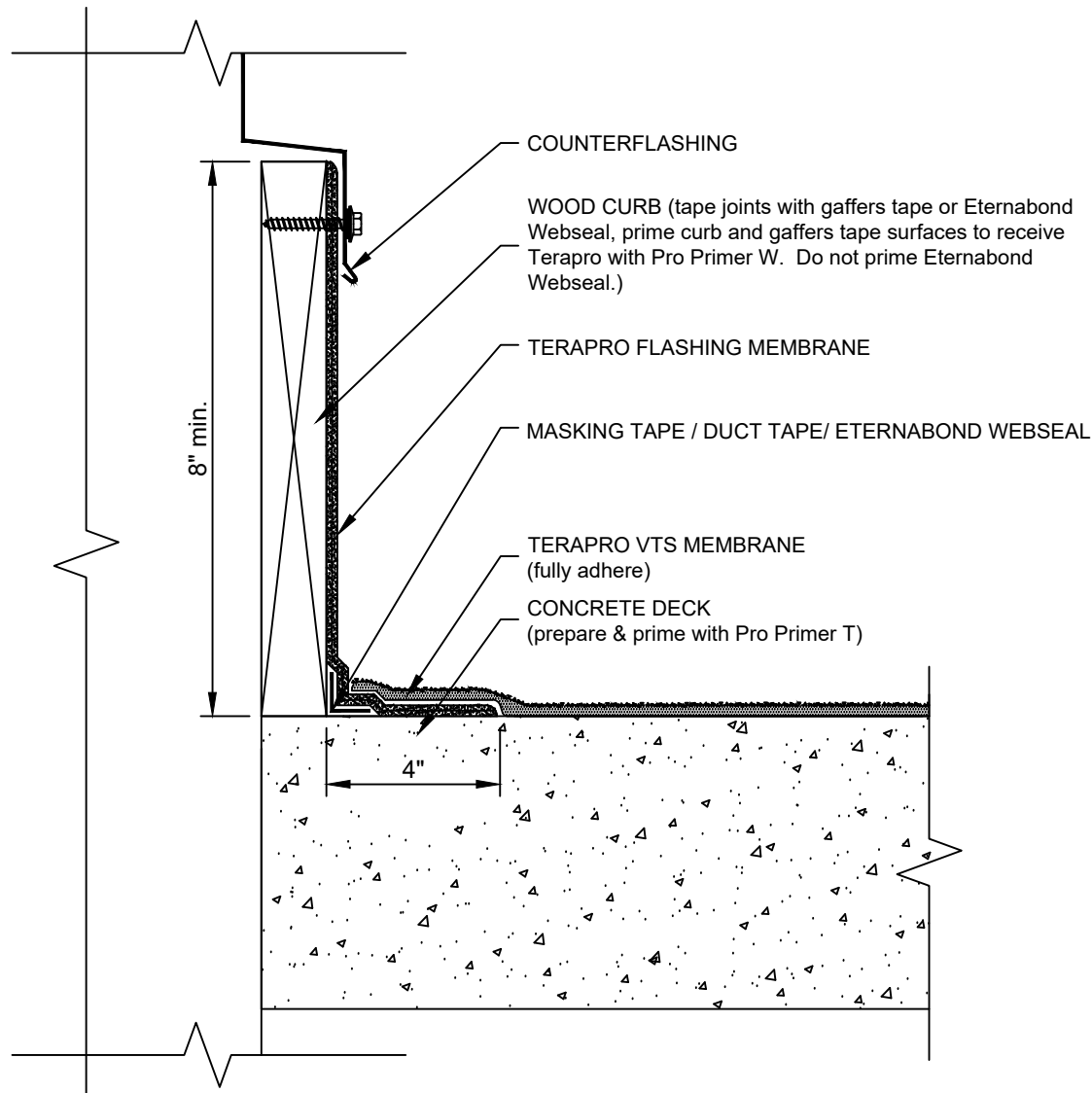


CURB

TERAPRO VTS UNREINFORCED



- NOTES:
1. REFER TO SIPLAST PREPARATION GUIDELINES FOR PROPER SURFACE PREPARATION OF ALL SUBSTRATES PRIOR TO APPLICATION OF TERAPRO MATERIALS.
 2. REQUIREMENTS AND RECOMMENDATIONS DETAILED IN TERAPRO VTS INSTALLATION SPECIFICATIONS SHALL APPLY IN ADDITION TO THE ABOVE DRAWING.

N.T.S.



1000 East Rochelle Boulevard - Irving, Texas - 75062 (800) 922-8800 www.siplast.com

Ref: Curb UNTpro VTS - 09.20.12

DE-LWM-31-01c