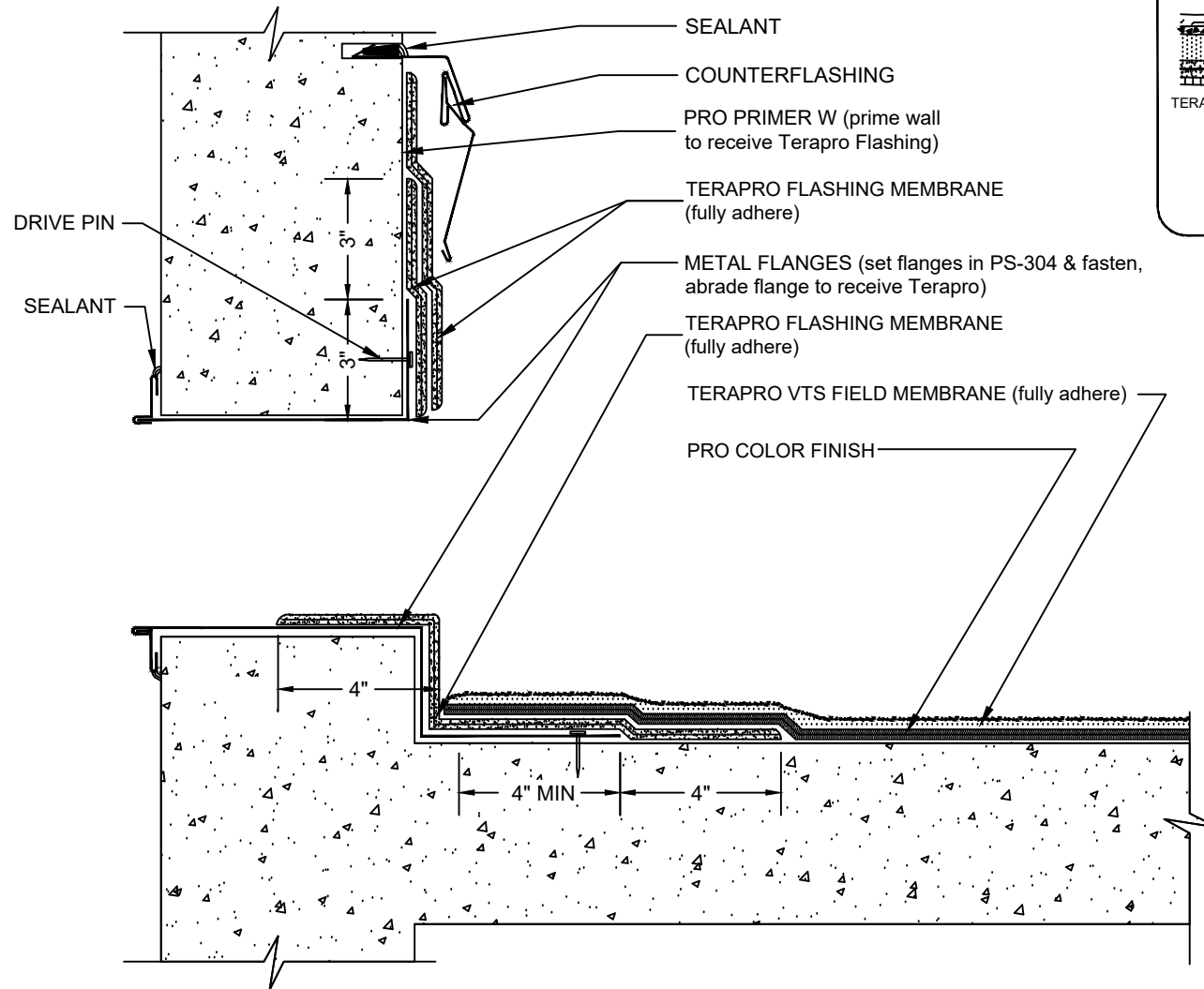


OVERFLOW SCUPPER

TERAPRO VTS REINFORCED - CONCRETE SUBSTRATE



- NOTES:
1. REFER TO SIPLAST PREPARATION GUIDELINES FOR PROPER SURFACE TREATMENT OF ALL MATERIALS PRIOR TO APPLICATION OF TERAPRO MATERIAL.
 2. REQUIREMENTS AND RECOMMENDATIONS DETAILED IN TERAPRO VTS INSTALLATION SPECIFICATIONS SHALL APPLY IN ADDITION TO THE ABOVE DRAWING.
 3. THE CARPENTRY AND METAL WORK SHOWN DEPICTS SHOP FABRICATION AND JOB-SITE ASSEMBLY. THESE COMPONENTS SHOULD BE DESIGNED/ FABRICATED/INSTALLED ACCORDING TO GENERALLY ACCEPTED INDUSTRY PRACTICES, STANDARDS, AND APPROVALS.

N.T.S.



1000 East Rochelle Boulevard - Irving, Texas - 75062 (800) 922-8800 www.siplast.com

Ref: Oflow scupper R-Tpro-vts concrete - 07.12.12

DE-LWM-30-02m