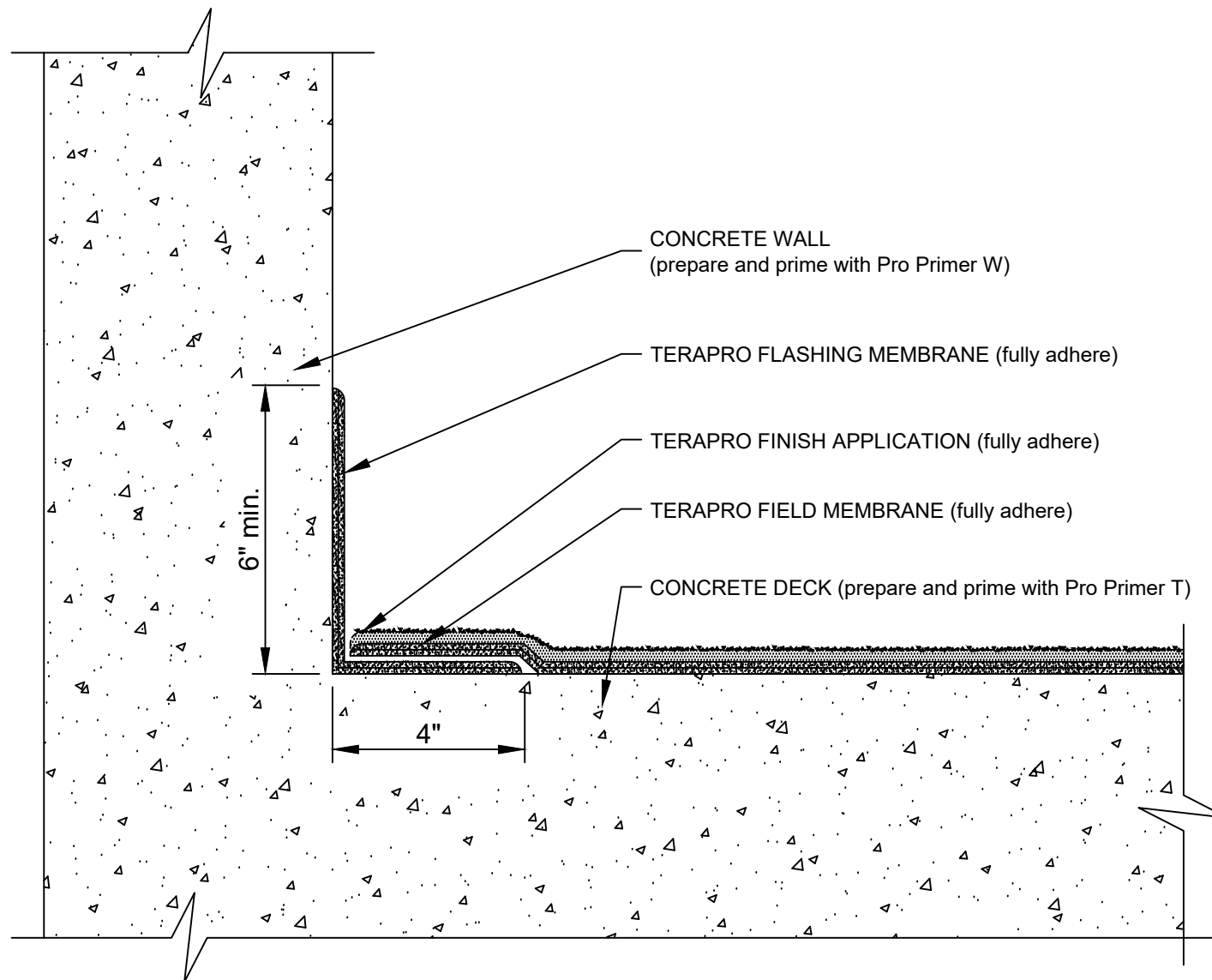


# WALL FLASHING (MONOLITHIC WALL/DECK)

## TERAPRO (REINFORCED) - CONCRETE SUBSTRATE



- NOTES:
1. REFER TO SIPLAST PREPARATION GUIDELINES FOR PROPER SURFACE PREPARATION OF ALL SUBSTRATES PRIOR TO APPLICATION OF TERAPRO MATERIALS.
  2. REQUIREMENTS AND RECOMMENDATIONS DETAILED IN TERAPRO INSTALLATION SPECIFICATIONS SHALL APPLY IN ADDITION TO THE ABOVE DRAWING.

N.T.S.