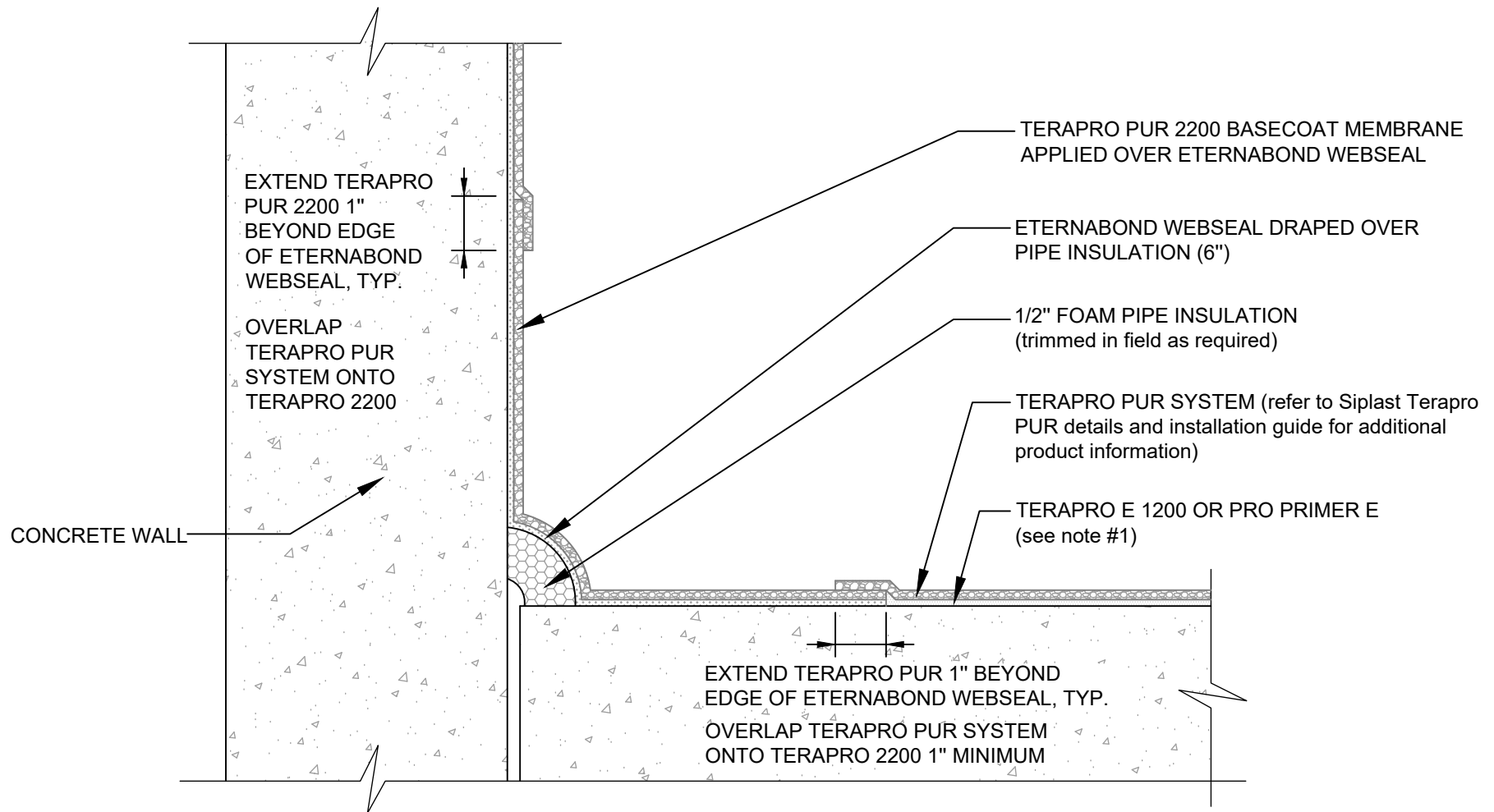


EXPANSION JOINT AT HORIZONTAL TO VERTICAL TRANSITION TERAPRO PUR - CONCRETE SUBSTRATE



NOTES:

1. TERAPRO E 1200 MAY BE UTILIZED WHEN THE MOISTURE CONTENT OF THE CONCRETE SUBSTRATE IS LESS THAN 75% RH. PRO PRIMER E SHOULD BE UTILIZED WHEN THE MOISTURE CONTENT OF THE CONCRETE SUBSTRATE IS 75% RH OR GREATER. PRIMER SELECTION MAY BE AFFECTED BY OTHER FACTORS INCLUDING BUT NOT LIMITED TO ENVIRONMENTAL CONDITIONS, DESIRED OVERCOATING TIMES, ETC. CONTACT SIPLAST TECHNICAL SERVICES DEPARTMENT FOR ADDITIONAL INFORMATION.
2. REFER TO SIPLAST PREPARATION GUIDELINES FOR PROPER SURFACE TREATMENT OF ALL MATERIALS PRIOR TO APPLICATION OF TERAPRO PUR MATERIALS.
3. REQUIREMENTS AND RECOMMENDATIONS DETAILED IN TERAPRO PUR INSTALLATION SPECIFICATIONS SHALL APPLY IN ADDITION TO THE ABOVE DRAWING.

Scale: NTS

REF: EXPANSION JOINT AT HORIZONTAL TO VERTICAL TRANSITION - TERAPRO PUR - CONCRETE

Detail Number:
DE-LS-69-06b



14911 Quorum Drive, Suite 600 - Dallas, Texas - 75254 (800) 922-8800

www.siplast.com

Rev: 01.23.2025