

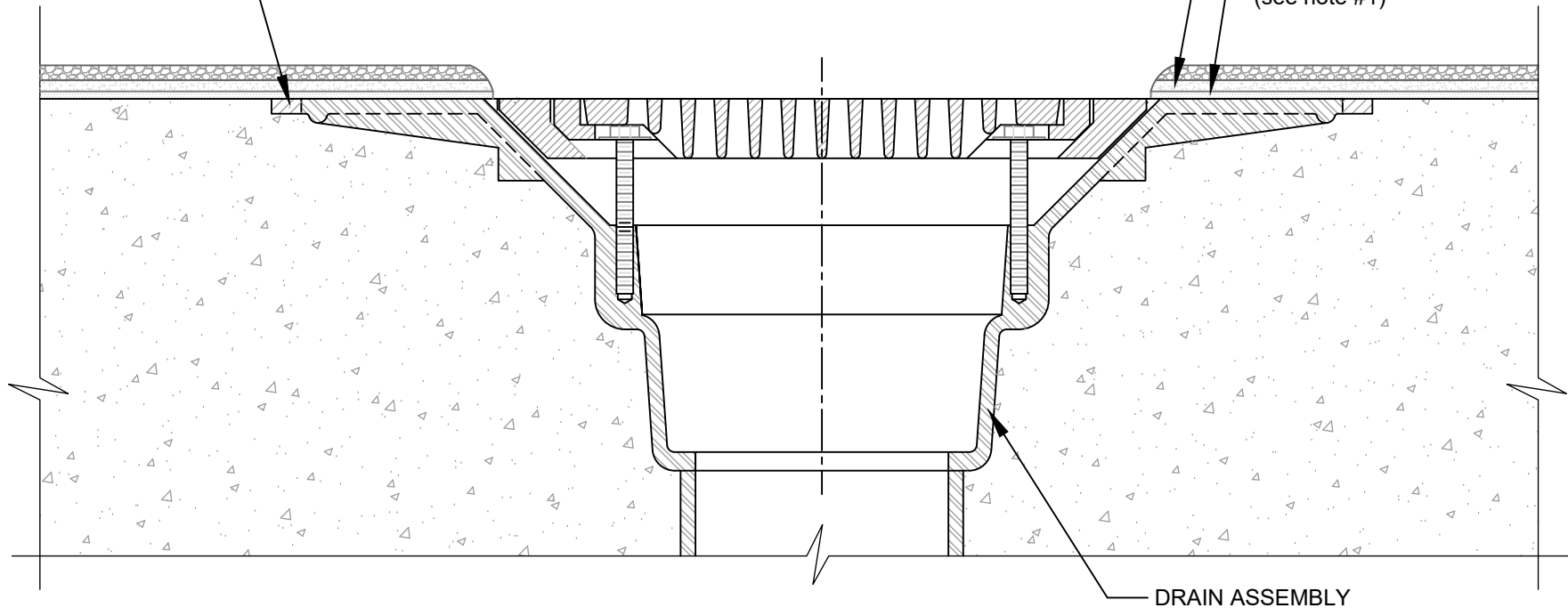
ROOF DRAIN

TERAPRO PUR - CONCRETE SUBSTRATE

FILL GAP BETWEEN DECK AND DRAIN WITH PS-715 NS ELASTOMERIC SEALANT PRIOR TO PLACEMENT OF TERAPRO PUR SYSTEM (typical around perimeter of drain assembly)

TERAPRO PUR WATERPROOFING SYSTEM (refer to Siplast Terapro PUR details for system variant specific coating layers)

TERAPRO E 1200 OR PRO PRIMER E (see note #1)



NOTES:

1. TERAPRO E 1200 MAY BE UTILIZED WHEN THE MOISTURE CONTENT OF THE CONCRETE SUBSTRATE IS LESS THAN 75% RH. PRO PRIMER E SHOULD BE UTILIZED WHEN THE MOISTURE CONTENT OF THE CONCRETE SUBSTRATE IS 75% RH OR GREATER. PRIMER SELECTION MAY BE AFFECTED BY OTHER FACTORS INCLUDING BUT NOT LIMITED TO ENVIRONMENTAL CONDITIONS, DESIRED OVERCOATING TIMES, ETC. CONTACT SIPLAST TECHNICAL SERVICES DEPARTMENT FOR ADDITIONAL INFORMATION.
2. THE TERAPRO PUR WATERPROOFING SYSTEM MUST BE TERMINATED WITH FULL THICKNESS (i.e. do not "feather"), METHODS TO ENSURE A FULL THICKNESS TERMINATION INCLUDE, BUT ARE NOT LIMITED TO, USING MASKING TAPE MASKING OR A TEMPORARY SHIELD. IF TAPE IS UTILIZED, INSTALLER MUST ENSURE THAT NO RESIDUAL TAPE IS REMAINING AFTER REMOVAL.

Scale: NTS

REF: ROOF DRAIN - TERAPRO PUR - CONCRETE

Detail Number:

DE-LS-69-02a



14911 Quorum Drive, Suite 600 - Dallas, Texas - 75254 (800) 922-8800

www.siplast.com

Rev: 01.23.2025