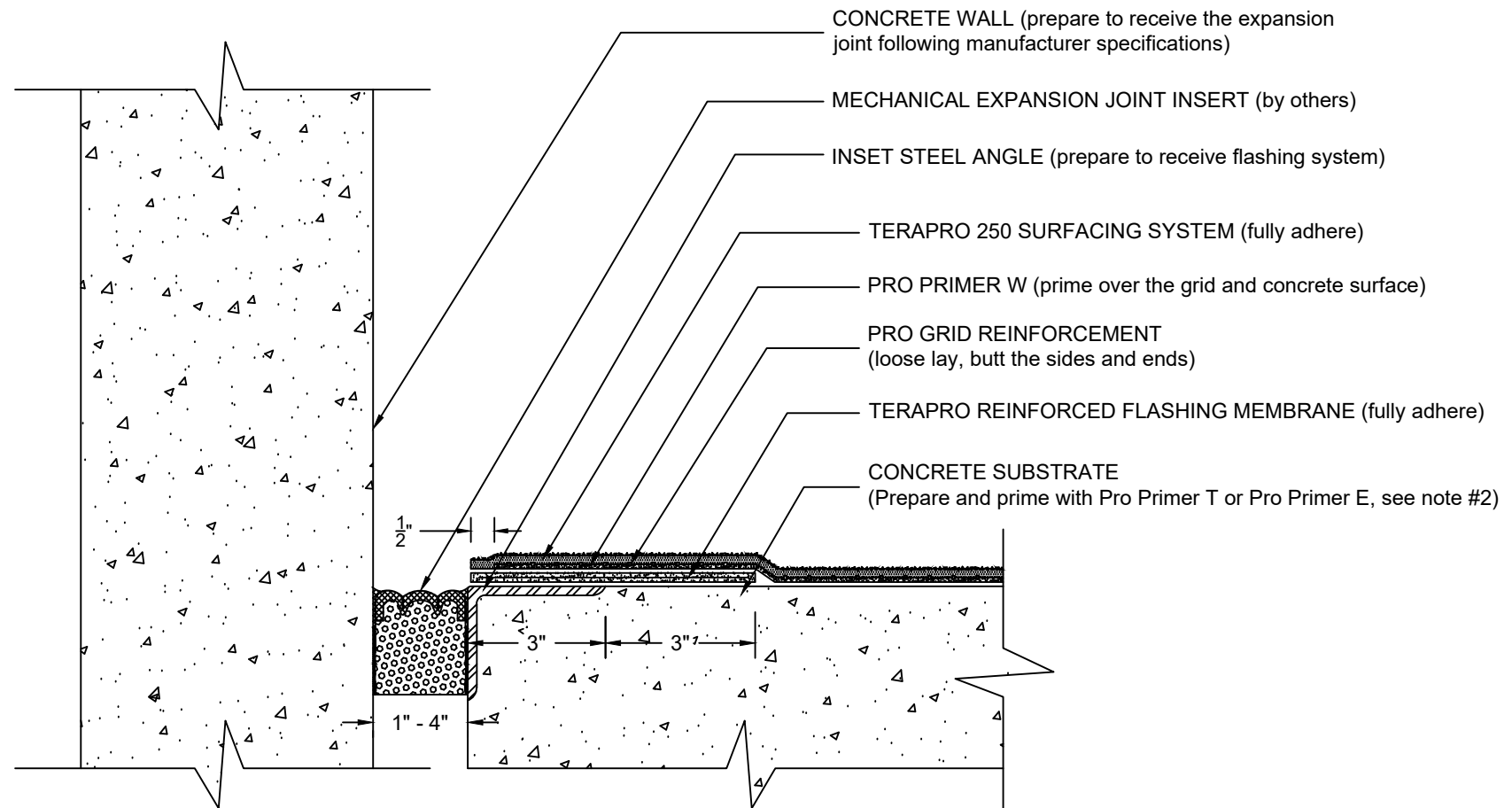


MECHANICAL EXPANSION JOINT INSERT - HORIZONTAL TO VERTICAL

TERAPRO 250 SURFACING SYSTEM (PRO GRID REINFORCED) - CONCRETE SUBSTRATE



NOTES:

1. REFER TO SIPLAST PREPARATION GUIDELINES FOR PROPER SURFACE PREPARATION OF ALL SUBSTRATES PRIOR TO APPLICATION OF TERAPRO MATERIALS.
2. THE EXPANSION JOINT INSERT SHOULD BE INSTALLED ACCORDING TO THE MANUFACTURER'S SPECIFICATIONS AND RECOMMENDATIONS.
3. QUALIFY THE CONCRETE SUBSTRATE IN ACCORDANCE WITH SIPLAST SPECIFICATIONS AND MECHANICALLY PREPARE TO A CSP 2 TO CSP 4 PROFILE.
4. REQUIREMENTS AND RECOMMENDATIONS DETAILED IN TERAPRO SPECIFICATIONS SHALL APPLY IN ADDITION TO THE ABOVE DRAWING.

N.T.S