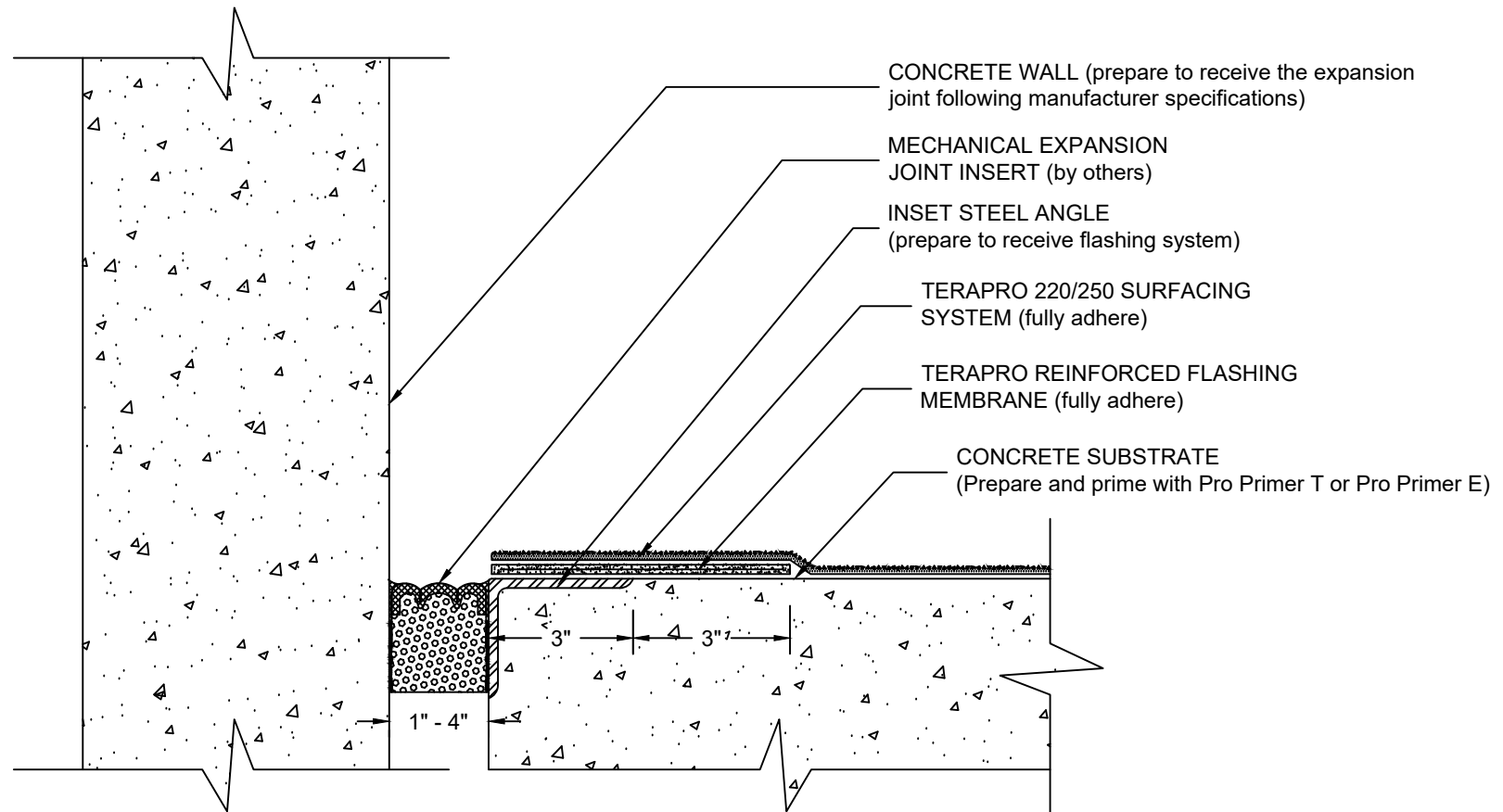


MECHANICAL EXPANSION JOINT INSERT - HORIZONTAL TO VERTICAL

TERAPRO 220/250 SURFACING SYSTEM - CONCRETE SUBSTRATE



NOTES:

1. REFER TO SIPLAST PREPARATION GUIDELINES FOR PROPER SURFACE TREATMENT OF ALL MATERIALS PRIOR TO APPLICATION OF TERAPRO SURFACING MATERIALS.
2. THE EXPANSION JOINT INSERT SHOULD BE INSTALLED ACCORDING TO THE MANUFACTURER'S SPECIFICATIONS AND RECOMMENDATIONS.
3. REQUIREMENTS AND RECOMMENDATIONS DETAILED IN TERAPRO 220/250 SURFACING SYSTEM SPECIFICATIONS SHALL APPLY IN ADDITION TO THE ABOVE DRAWING.

N.T.S