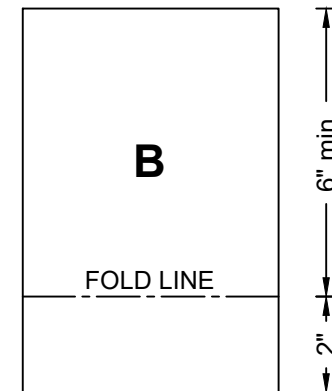
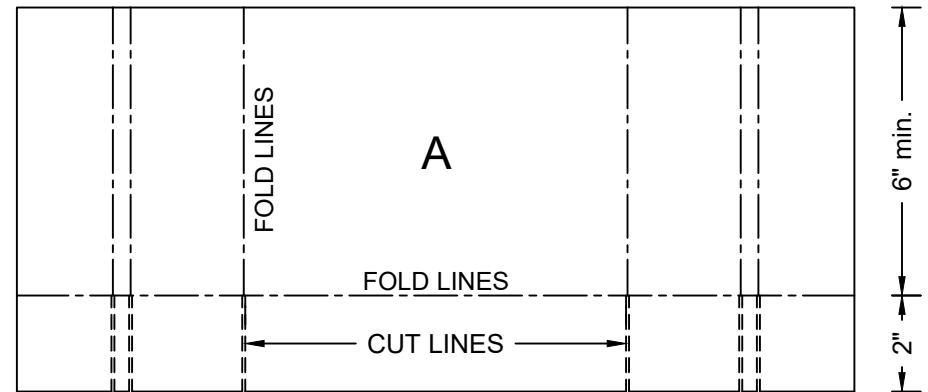
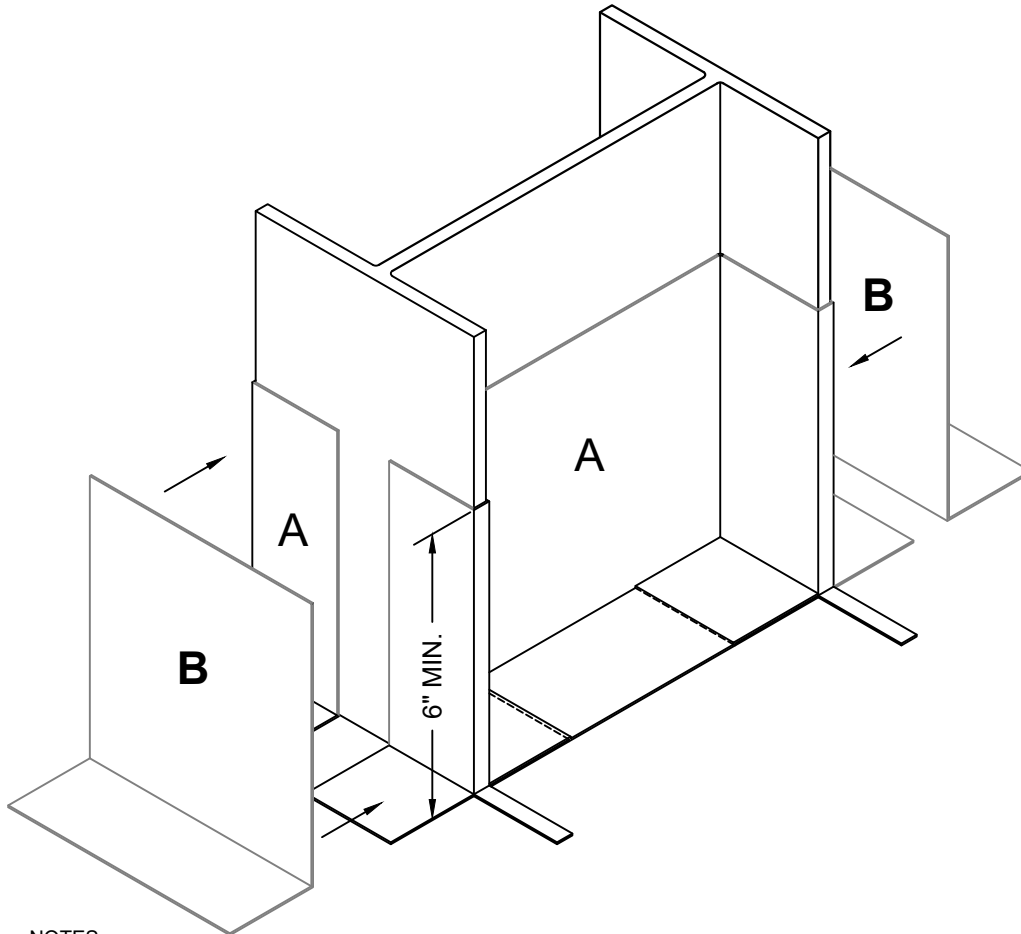


**PARAFLEX 531 LIQUID FLASHING**  
**FLEECE CUTTING RECOMMENDATIONS**  
**TYPICAL ANGLE IRON DETAIL 1: VERTICAL SURFACES**



**NOTES:**

1. SEE SCHEMATICS "FC I-beam S-2" and "FC I-beam S-3" FOR FLEECE CUTTING TREATMENT OF HORIZONTAL SURFACES.
2. REFER TO SIPLAST PREPARATION GUIDELINES FOR PROPER SURFACE TREATMENT OF ALL MATERIALS PRIOR TO APPLICATION OF THE FLASHING SYSTEM.
3. REQUIREMENTS AND RECOMMENDATIONS DETAILED IN THE APPLICABLE INSTALLATION SPECIFICATIONS SHALL APPLY IN ADDITION TO THE ABOVE DRAWING.
4. REFER TO SIPLAST PARAFLEX FLASHING DETAILS FOR PROPER FLEECE CONFIGURATION WITH BITUMINOUS ROOFING AT APPLICABLE PENETRATIONS AND/OR TRANSITIONS AND REQUIRED DIMENSIONS.

**CAUTION:** SIPLAST RECOMMENDS THAT ALL PRACTICES PERTAINING TO INDUSTRY STANDARD TORCH SAFETY REQUIREMENTS AND GUIDELINES BE FOLLOWED. THIS INCLUDES PERFORMING A FIRE WATCH FOLLOWING ANY TORCH APPLICATIONS. ALWAYS HAVE APPROVED FIRE EXTINGUISHING EQUIPMENT NEARBY WHEN USING A TORCH.

Scale: NTS

REF: FC I-BEAM S-1 - PARAFLEX

**Detail Number:**  
**DE-LRM-24-14e**



14911 Quorum Drive, Suite 600 - Dallas, Texas - 75254 (800) 922-8800

[www.siplast.com](http://www.siplast.com)

**Rev:** 11.21.2024