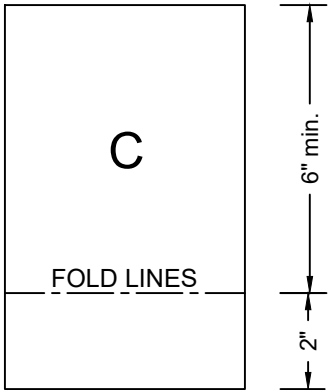
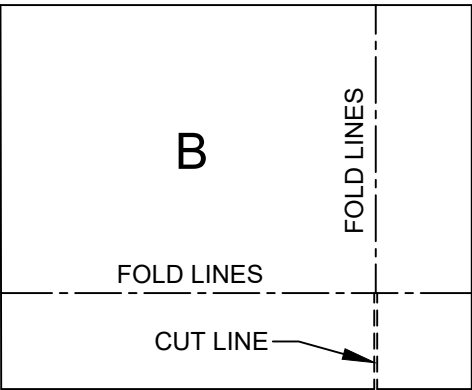
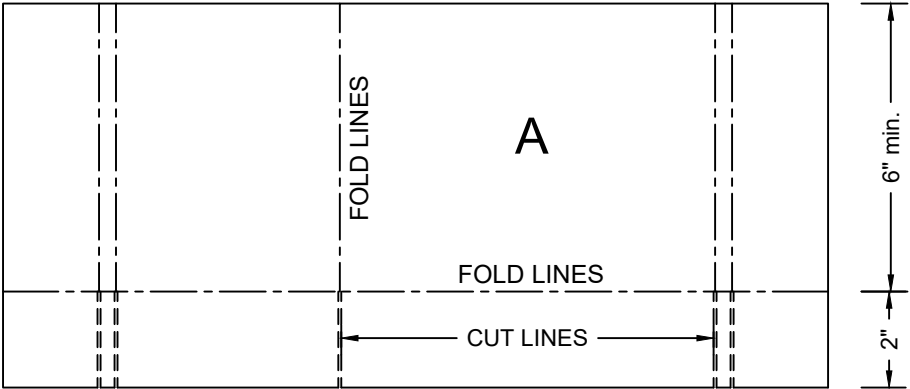
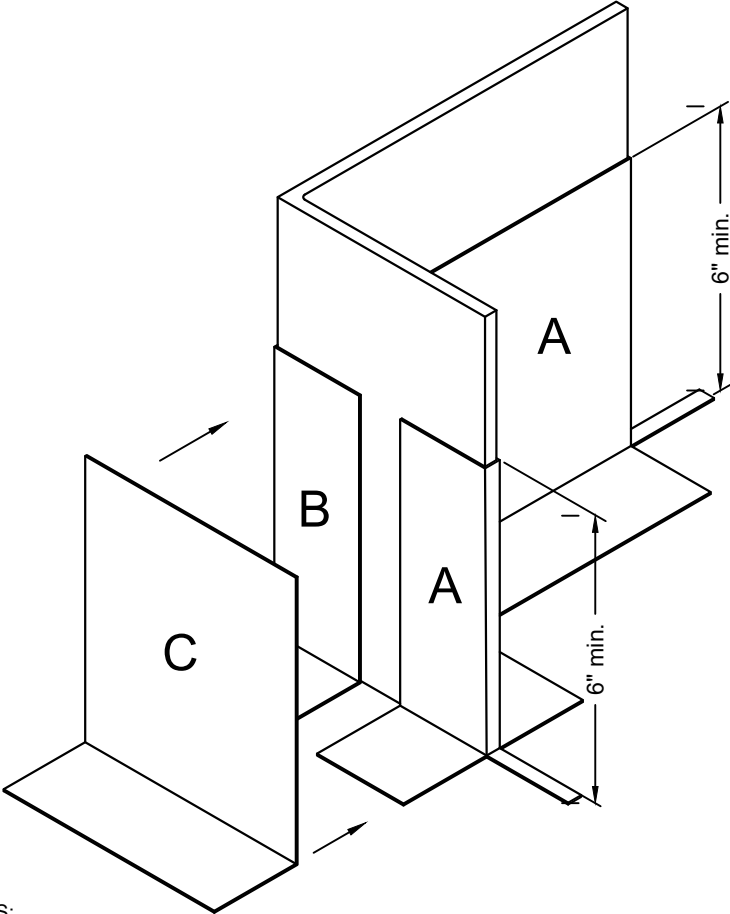


**PARAFLEX 531 LIQUID FLASHING**  
**FLEECE CUTTING RECOMMENDATIONS**  
**TYPICAL ANGLE IRON DETAIL 1: VERTICAL SURFACES**



NOTES:

- SEE SCHEMATICS "FC angle S-2" and "FC angle S-3" FOR FLEECE CUTTING TREATMENT OF HORIZONTAL SURFACES.
- REFER TO SIPLAST PREPARATION GUIDELINES FOR PROPER SURFACE TREATMENT OF ALL MATERIALS PRIOR TO APPLICATION OF THE FLASHING SYSTEM.
- REQUIREMENTS AND RECOMMENDATIONS DETAILED IN THE APPLICABLE INSTALLATION SPECIFICATIONS SHALL APPLY IN ADDITION TO THE ABOVE DRAWING.
- REFER TO SIPLAST PARAFLEX FLASHING DETAILS FOR PROPER FLEECE CONFIGURATION WITH BITUMINOUS ROOFING AT APPLICABLE PENETRATIONS AND/OR TRANSITIONS AND REQUIRED DIMENSIONS.

CAUTION: SIPLAST RECOMMENDS THAT ALL PRACTICES PERTAINING TO INDUSTRY STANDARD TORCH SAFETY REQUIREMENTS AND GUIDELINES BE FOLLOWED. THIS INCLUDES PERFORMING A FIRE WATCH FOLLOWING ANY TORCH APPLICATIONS. ALWAYS HAVE APPROVED FIRE EXTINGUISHING EQUIPMENT NEARBY WHEN USING A TORCH.

Scale: NTS

REF: FC ANGLE S-1 - PARAFLEX

**Detail Number:**  
 DE-LRM-24-14a



14911 Quorum Drive, Suite 600 - Dallas, Texas - 75254 (800) 922-8800

www.siplast.com

Rev: 11.21.2024