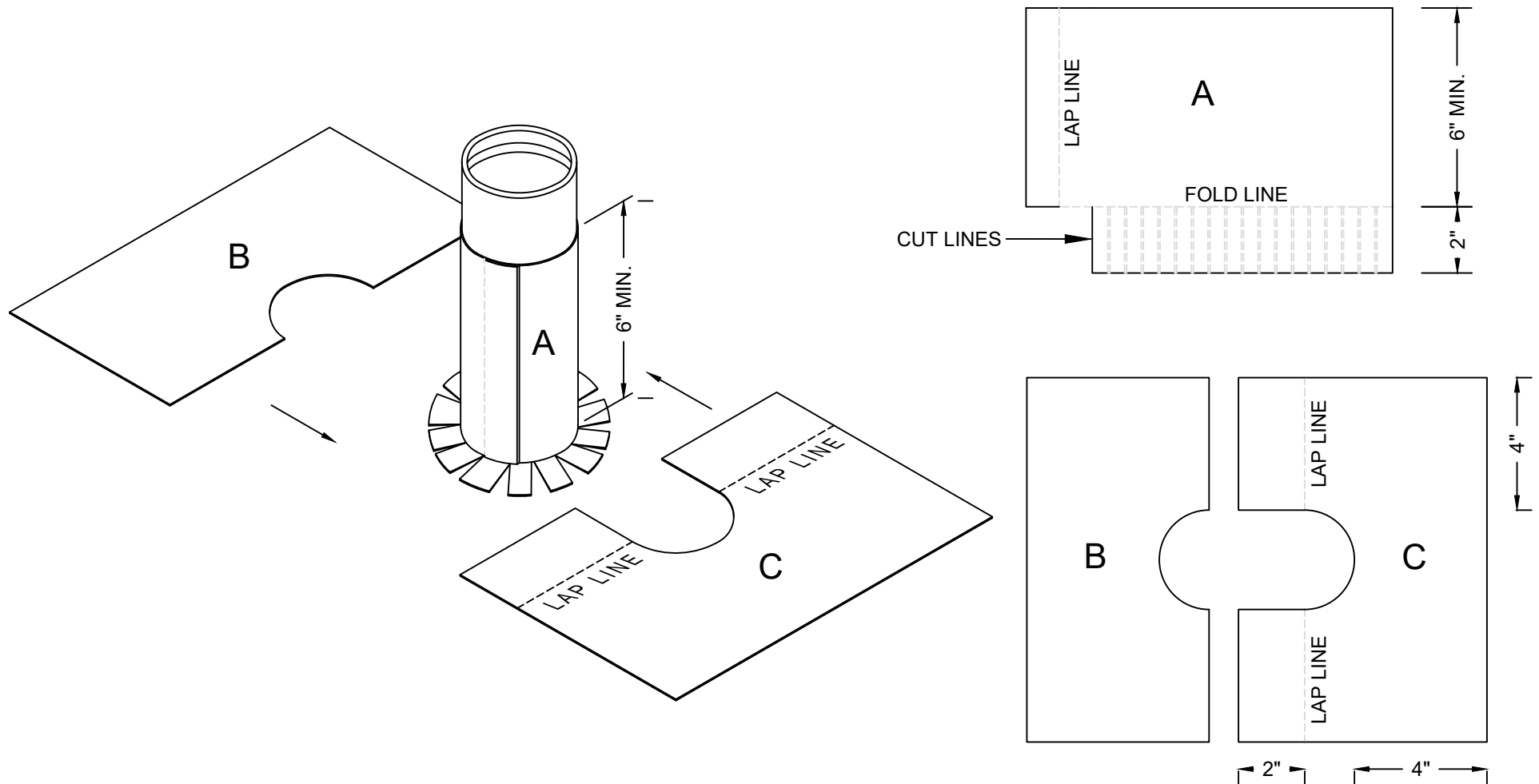


# PARAPRO 123 FLASHING SYSTEM

## FLEECE CUTTING RECOMMENDATIONS

### TYPICAL ROUND PIPE PENETRATION DETAIL (INTERPLY)



#### NOTES:

1. REFER TO SIPLAST PREPARATION GUIDELINES FOR PROPER SURFACE TREATMENT OF ALL MATERIALS PRIOR TO APPLICATION OF THE FLASHING SYSTEM.
2. REQUIREMENTS AND RECOMMENDATIONS DETAILED IN THE APPLICABLE INSTALLATION SPECIFICATIONS SHALL APPLY IN ADDITION TO THE ABOVE DRAWING.
3. REFER TO SIPLAST PARAPRO FLASHING DETAILS FOR PROPER FLEECE CONFIGURATION WITH BITUMINOUS ROOFING AT APPLICABLE PENETRATIONS AND/OR TRANSITIONS AND REQUIRED DIMENSIONS.

Scale: NTS

REF: FC ROUND PIPE - INTERPLY



14911 Quorum Drive, Suite 600 - Dallas, Texas - 75254 (800) 922-8800

[www.siplast.com](http://www.siplast.com)

**Detail Number:**  
DE-LRM-20-14j

**Rev:** 12.09.2024