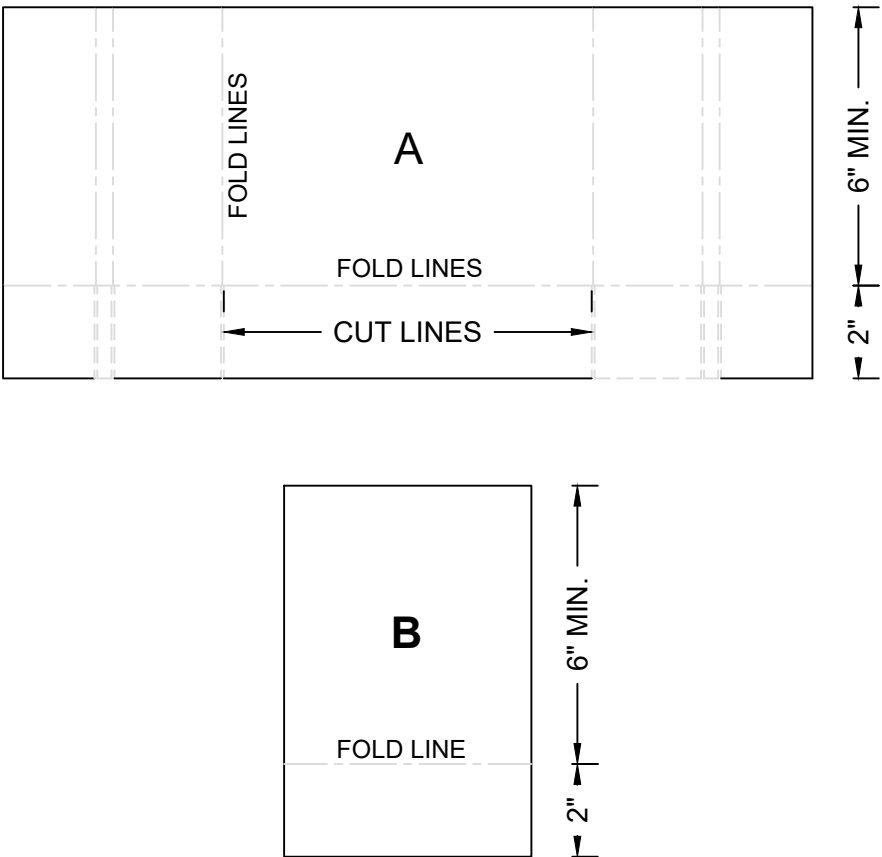
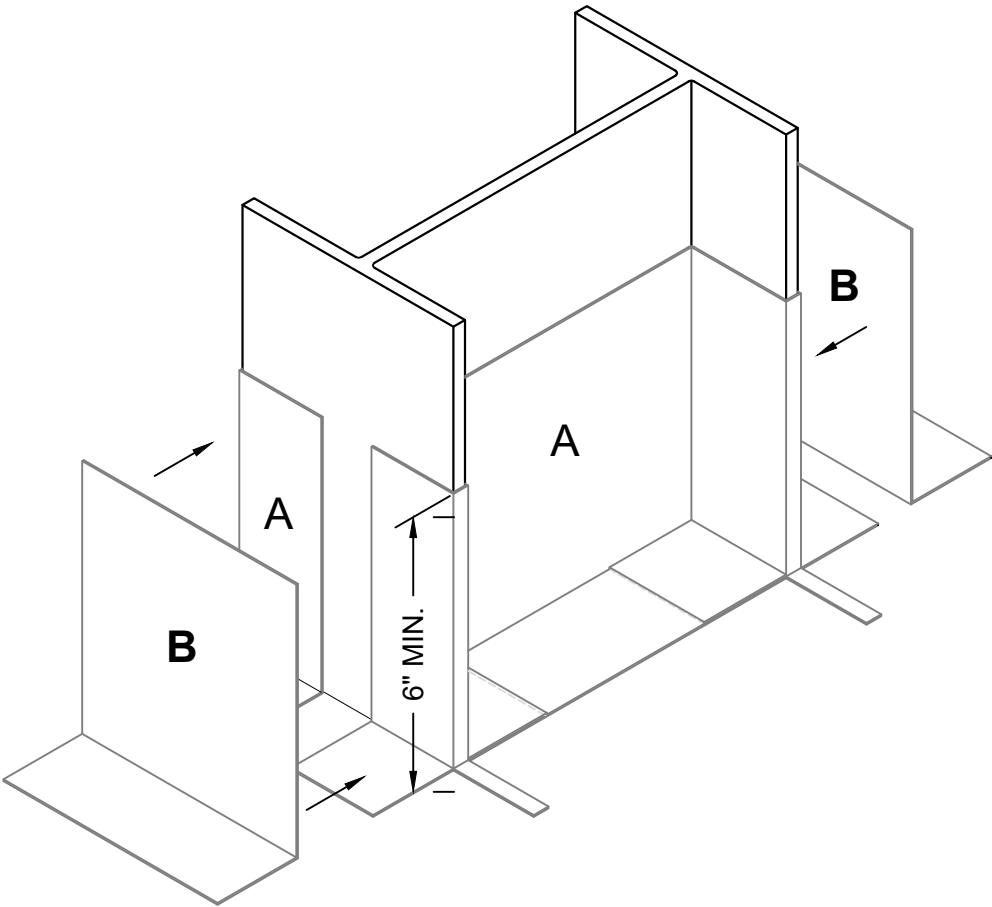


PARAPRO 123 FLASHING SYSTEM  
FLEECE CUTTING RECOMMENDATIONS  
TYPICAL I-BEAM DETAIL 1: VERTICAL SURFACES



- NOTES:
- 1. SEE SCHEMATICS "FC I-beam S-2" and "FC I-beam S-3" FOR FLEECE CUTTING TREATMENT OF HORIZONTAL SURFACES.
  - 2. REFER TO SIPLAST PREPARATION GUIDELINES FOR PROPER SURFACE TREATMENT OF ALL MATERIALS PRIOR TO APPLICATION OF THE FLASHING SYSTEM.
  - 3. REQUIREMENTS AND RECOMMENDATIONS DETAILED IN THE APPLICABLE INSTALLATION SPECIFICATIONS SHALL APPLY IN ADDITION TO THE ABOVE DRAWING.
  - 4. REFER TO SIPLAST PARAPRO FLASHING DETAILS FOR PROPER FLEECE CONFIGURATION WITH BITUMINOUS ROOFING AT APPLICABLE PENETRATIONS AND/OR TRANSITIONS AND REQUIRED DIMENSIONS.

Scale: NTS

REF: FC I-BEAM S-1

Detail Number:  
DE-LRM-20-14e



14911 Quorum Drive, Suite 600 - Dallas, Texas - 75254 (800) 922-8800

[www.siplast.com](http://www.siplast.com)

Rev: 12.09.2024