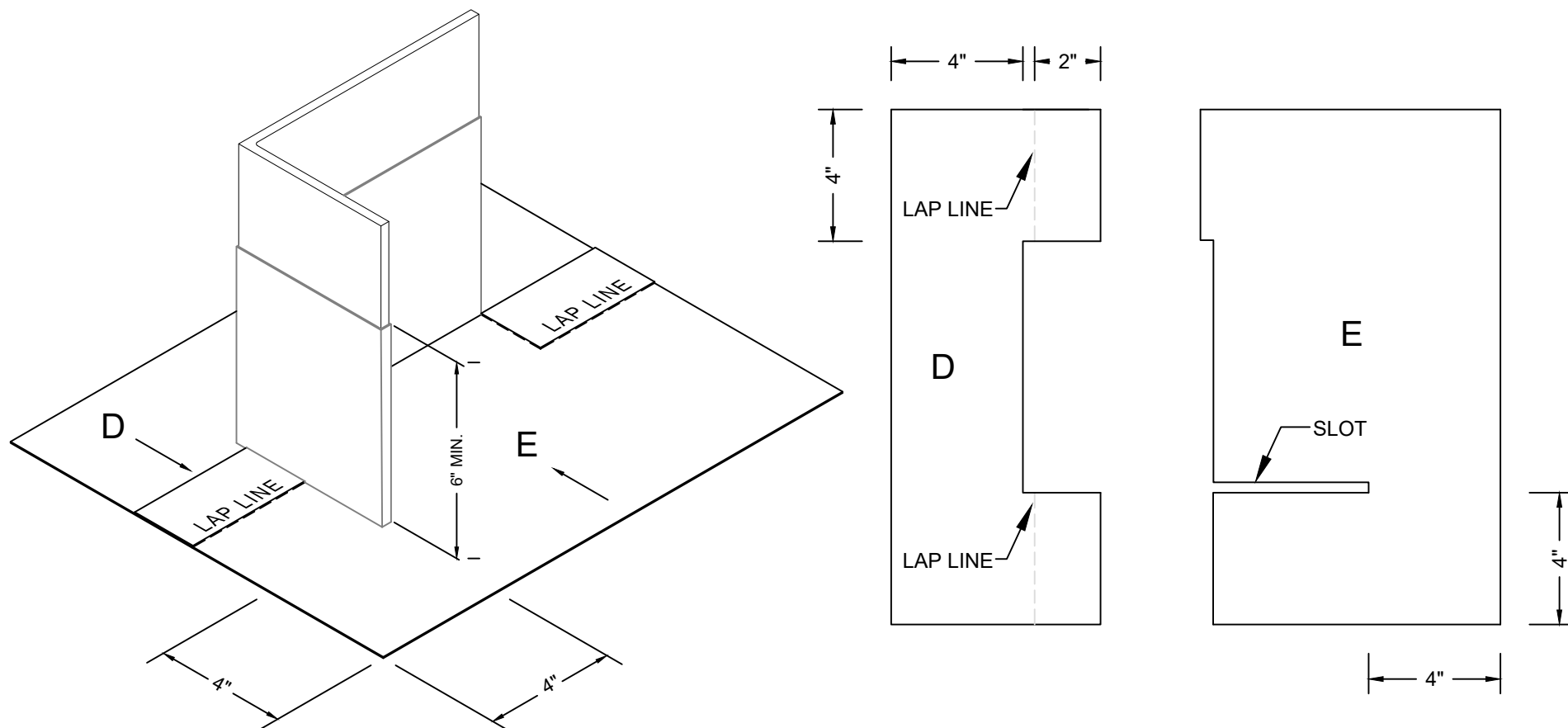


PARAPRO 123 FLASHING SYSTEM

FLEECE CUTTING RECOMMENDATIONS

TYPICAL ANGLE IRON DETAIL 3: VERTICAL SURFACES



NOTES:

1. SEE SCHEMATIC "FC angle S-1" FOR FLEECE CUTTING TREATMENT OF VERTICAL SURFACES.
2. REFER TO SIPLAST PREPARATION GUIDELINES FOR PROPER SURFACE TREATMENT OF ALL MATERIALS PRIOR TO APPLICATION OF THE FLASHING SYSTEM.
3. REQUIREMENTS AND RECOMMENDATIONS DETAILED IN THE APPLICABLE INSTALLATION SPECIFICATIONS SHALL APPLY IN ADDITION TO THE ABOVE DRAWING.
4. REFER TO SIPLAST PARAPRO FLASHING DETAILS FOR PROPER FLEECE CONFIGURATION WITH BITUMINOUS ROOFING AT APPLICABLE PENETRATIONS AND/OR TRANSITIONS AND REQUIRED DIMENSIONS.

Scale: NTS

REF: FC ANGLE S-3



14911 Quorum Drive, Suite 600 - Dallas, Texas - 75254 (800) 922-8800

www.siplast.com

Detail Number:
DE-LRM-20-14c

Rev: 12.09.2024