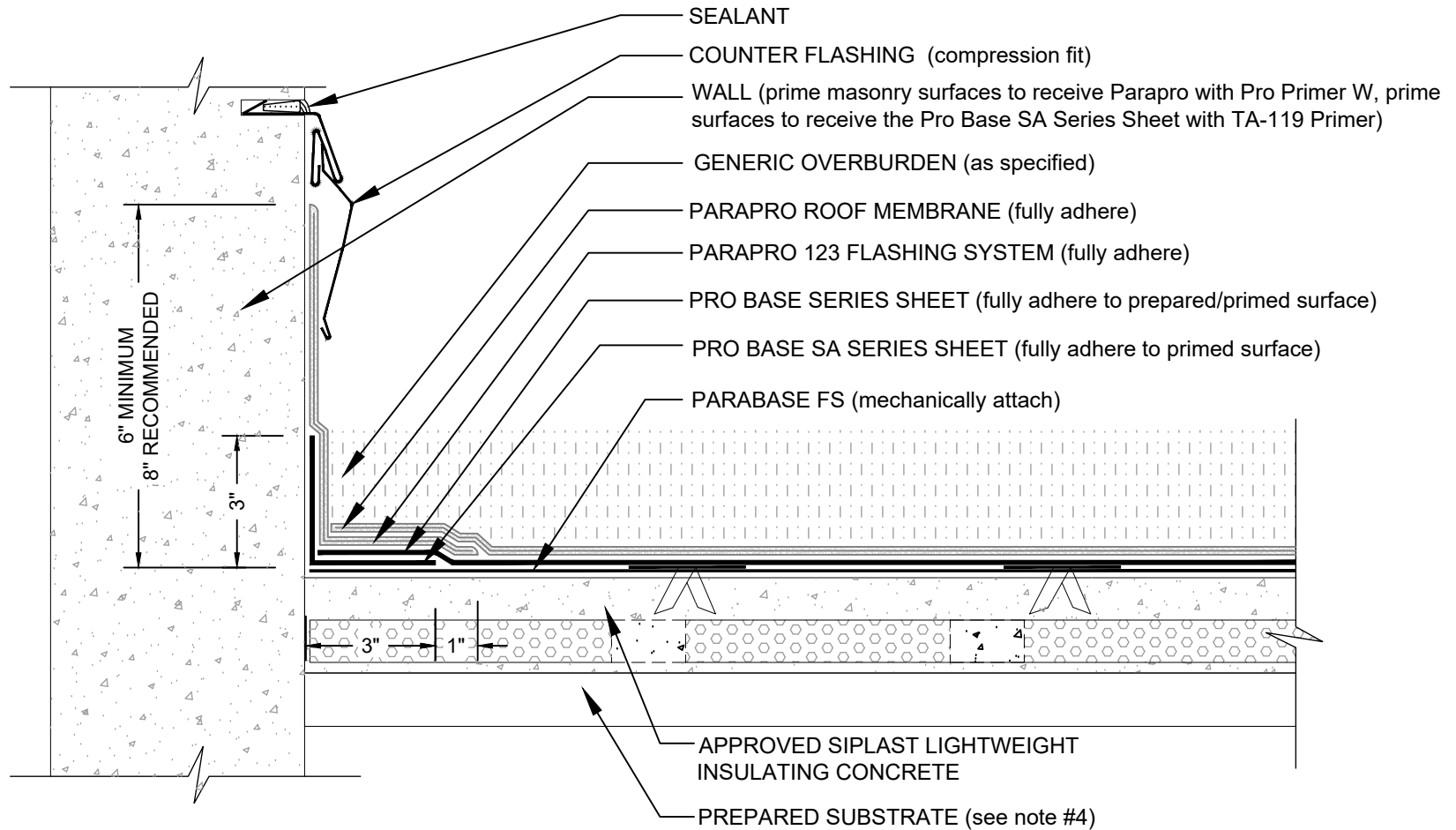


WALL FLASHING

PARAPRO WATERPROOFING MEMBRANE - PRO BASE SERIES BASE PLY - LWIC



NOTES:

1. REFER TO SIPLAST PREPARATION GUIDELINES FOR PROPER SURFACE TREATMENT OF ALL MATERIALS PRIOR TO APPLICATION OF PARAPRO MATERIALS.
2. PARAPRO CANNOT BE APPLIED IN THE ABOVE CONFIGURATION OVER MEMBRANES OR OTHER MATERIALS CONTAINING UNCURED, SOLVENT-BASED MATERIALS. CONTACT SIPLAST FOR FURTHER INFORMATION.
3. REQUIREMENTS AND RECOMMENDATIONS DETAILED IN CURRENT SIPLAST SPECIFICATIONS AND THE PARAPRO ROOF SYSTEM INSTALLER'S GUIDE SHALL APPLY IN ADDITION TO THE ABOVE DRAWING.
4. REFERENCE THE SIPLAST TECHNICAL GUIDE FOR THE APPROPRIATE SIPLAST LIGHTWEIGHT INSULATING CONCRETE SYSTEM WITH REGARD TO SPECIFIC SUBSTRATE TYPES.

CAUTION: SIPLAST RECOMMENDS THAT ALL PRACTICES PERTAINING TO INDUSTRY STANDARD TORCH SAFETY REQUIREMENTS AND GUIDELINES BE FOLLOWED. THIS INCLUDES PERFORMING A FIRE WATCH FOLLOWING ANY TORCH APPLICATIONS. ALWAYS HAVE APPROVED FIRE EXTINGUISHING EQUIPMENT NEARBY WHEN USING A TORCH.

Scale: NTS

REF: WALL FLASHING - PROBASE - PARAPRO - LWIC

Detail Number:
DE-LRM-20-05f



14911 Quorum Drive, Suite 600 - Dallas, Texas - 75254 (800) 922-8800

www.siplast.com

Rev: 12.09.2024